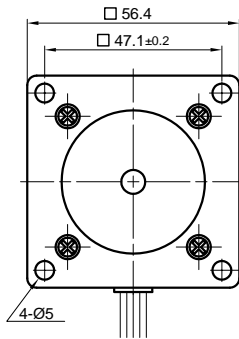
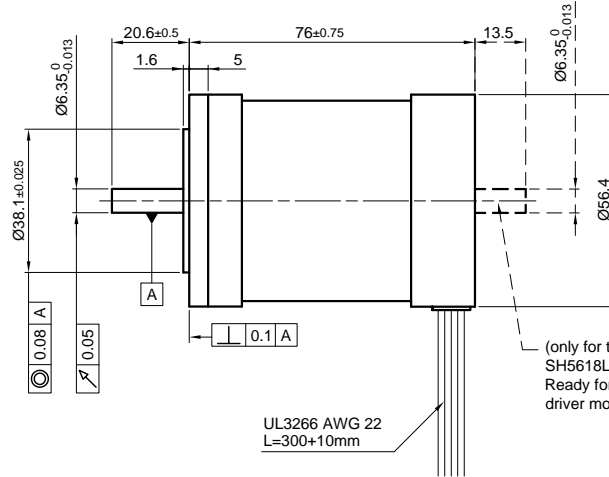


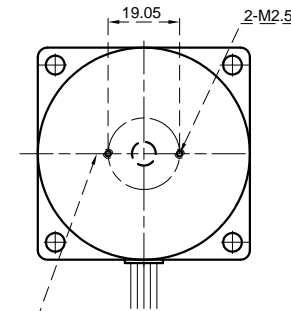
Front view and mounting



Side view



Rear view

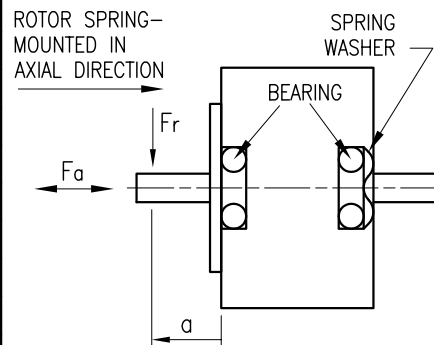


(only for type SH5618L1608-B Ready for encoder +- driver mount)

UL3266 AWG 22 L=300+10mm

SPECIFICATION	CONNECTION	UNIPOLAR OR BIPOLAR-1 WINDING	BIPOLAR	
			SERIAL	PARALLEL
VOLTAGE (VDC)		5.1	7.23	3.62
AMPS/PHASE		1.6	1.13	2.26
RESISTANCE/PHASE (Ohms)@25°C		3.2±15%	6.4±15%	1.6±15%
INDUCTANCE/PHASE (mH) @1KHz		6.3±20%	25.2±20%	6.3±20%
HOLDING TORQUE (Nm) [lb-in]		1.05 [9.292]	1.48 [13.1]	1.48 [13.1]
DETENT TORQUE (Nm) [lb-in]		0.0315 [0.279]		
STEP ANGLE (°)		1.8		
STEP ACCURACY (NON-ACCUM)		±5%		
ROTOR INERTIA (Kg-m ²) [lb-in ²]		2.30x10 ⁻⁵ [0.079]		
WEIGHT (Kg) [lb]		0.85 [1.874]		
TEMPERATURE RISE: MAX.80°C (MOTOR STANDSTILL; FOR 2 PHASE ENERGIZED)				
AMBIENT TEMPERATURE -10~ 50°C [14°F ~ 122°F]				
INSULATION RESISTANCE 100 MOhm (UNDER NORMAL TEMPERATURE AND HUMIDITY)				
INSULATION CLASS B 130° [266°F]				
DIELECTRIC STRENGTH 500VAC FOR 1 MIN. (BETWEEN THE MOTOR COILS AND THE MOTOR CASE)				
AMBIENT HUMIDITY MAX. 85% (NO CONDENSATION)				

PERMISSIBLE RADIAL+AXIAL FORCE



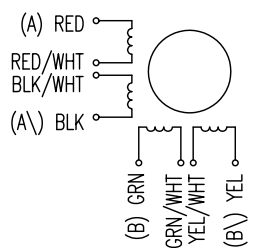
	AXIAL-FORCE Fa (N)			
	Fa=10	Fa=10		
DISTANCE a (mm)	5	10	15	20
RADIAL-FORCE Fr (N)	130	90	70	52
		AXIAL	RADIAL	
SHAFT PLAY (mm)		0.075	0.025	
AT LOAD MAX: (N)		10	5.0	

UNIPOLAR	TYPE OF CONNECTION (EXTERN)			MOTOR	
	1WINDING	BIPOLAR SERIAL	PARALLEL	LEADS	WINDING
A	A	A	A	RED	A
COM				RED/WHT	
A\		A\	A\	BLK/WHT	A\
B	B	B	B	BLK	B
COM				GRN	
B\		B\	B\	GRN/WHT	B\
				YEL/WHT	
				YEL	

FULL STEP 2 PHASE-Ex., WHEN FACING MOUNTING END (X)

STEP	A	B	A\	B\	CCW	CW
1	+	+	-	-	↓	↑
2	-	+	+	-	↓	↑
3	-	-	+	+	↓	↑
4	+	-	-	+	↓	↑

WIRING DIAGRAM



REV	DESCRIPTION	DATE	APVD	NANOTEC:	SCALE FREE	APVD	S.K.	13.07.06	STEPPING MOTOR
				SH5618L1608	X ±0.5	CHKD			
					1PL ±0.2	DRN	J.W.	13.07.06	DWG.NO
					2PL ±0.1	SIGNATURE		DATE	SH5618L1608
					ANGLE ±30'				