



Performance Kit

Lieferumfang / Scope of delivery:

- | | | | |
|------|---|-----|--|
| 1 x | Halteblech Endschalter / End switch bracket | 2 x | Motorhalter / Motor holder |
| 12 x | Linsenkopfschrauben M3 x 12 / Button head screw M3 x 12 | 2 x | Achsadapter Spindelseite / Spindle adapter |
| 2 x | Sechskantmutter selbstsichernd M5 / Hexagon nut, selflocking M5 | 2 x | Achsadapter Motorseite / Motor adapter |
| 2 x | Kabelschutzschlauch / Cable protection conduit | 4 x | Gummitülle / Rubber grommet |
| 1 x | Mikroschalter / Microswitch | 4 x | Gewindestift mit Zapfen 4 x 5 mm / Set screw with half dog point 4 x 5 mm |
| 1 x | Y-Endschalterkabel 2-adrig / End switch cable 2-core | 4 x | Gewindestift mit Ringschneide 4 x 4 mm / Set screw with cup point 4 x 4 mm |
| 2 x | Schrittmotor 2A / Stepper motor 2A | 4 x | Zylinderkopfschraube M6 x 65 / cylinder head screw M6 x 65 |
| 2 x | Anschlusskabel Schrittmotor 4-adrig / Stepper motor connection cable 4-core | 2 x | Hallsensor digital / Hall sensor digital |
| 2 x | Mutter M3 / Locknut M3 | 1 x | Anschlusskabel Hallsensor (bei D.600 & D.840) / Connection cable Hall sensor (for D.600 & D.840) |
| 1 x | Maschinen-Rückplatte / Machine rear plate | 1 x | Netzteil / Power supply |
| 1 x | Mainboard / Circuit board | | |
| 1 x | Kunststoffblende / Plastic cover | | |
| 4 x | Distanzhülse \varnothing 6,4 / 11 x 35 / Spacer \varnothing 6,4 / 11 x 35 | | |
| 2 x | Hallsensorhalter / Hall sensor holder | | |

Benötigtes Werkzeug / Required tools:

- | | |
|-------------------------|---------------------|
| Seitenschneider | Wire cutter |
| Inbusschlüssel 2 mm | Allen wrench 2 mm |
| Inbusschlüssel 2,5 mm | Allen wrench 2.5 mm |
| Inbusschlüssel 3 mm | Allen wrench 3 mm |
| Inbusschlüssel 4 mm | Allen wrench 4 mm |
| Inbusschlüssel 5 mm | Allen wrench 5 mm |
| kleiner Schraubendreher | Small screwdriver |
| 8 mm Steckschlüssel | 8 mm socket wrench |



Wiederverwendbare Maschinenteile / Reusable machine parts:



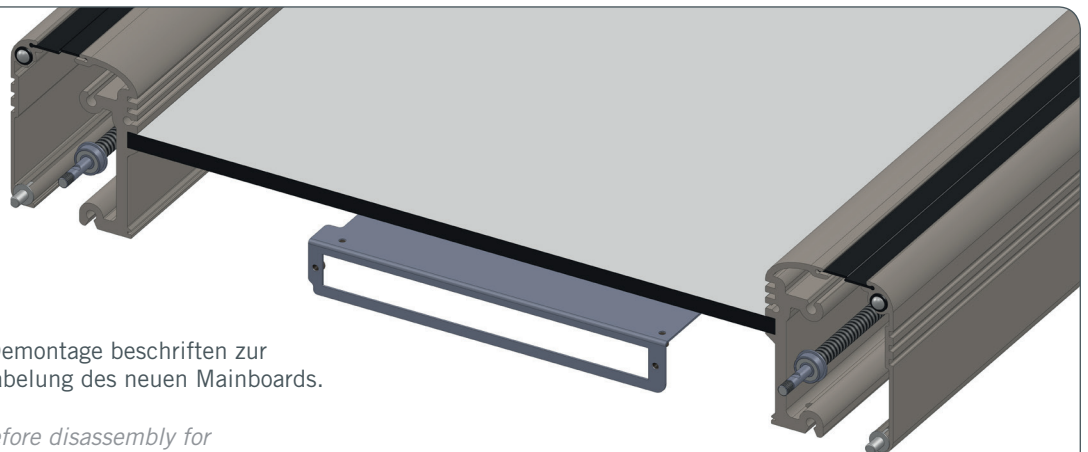
Montage / Assembly:

1



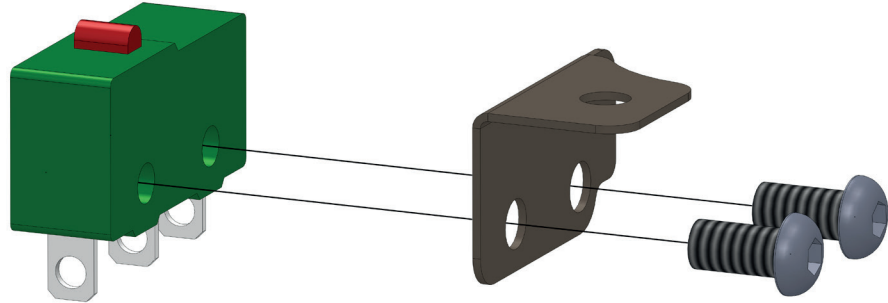
Leitungen vor Demontage beschriften zur einfachen Verkabelung des neuen Mainboards.

Label cables before disassembly for easy wiring of the new circuit board.

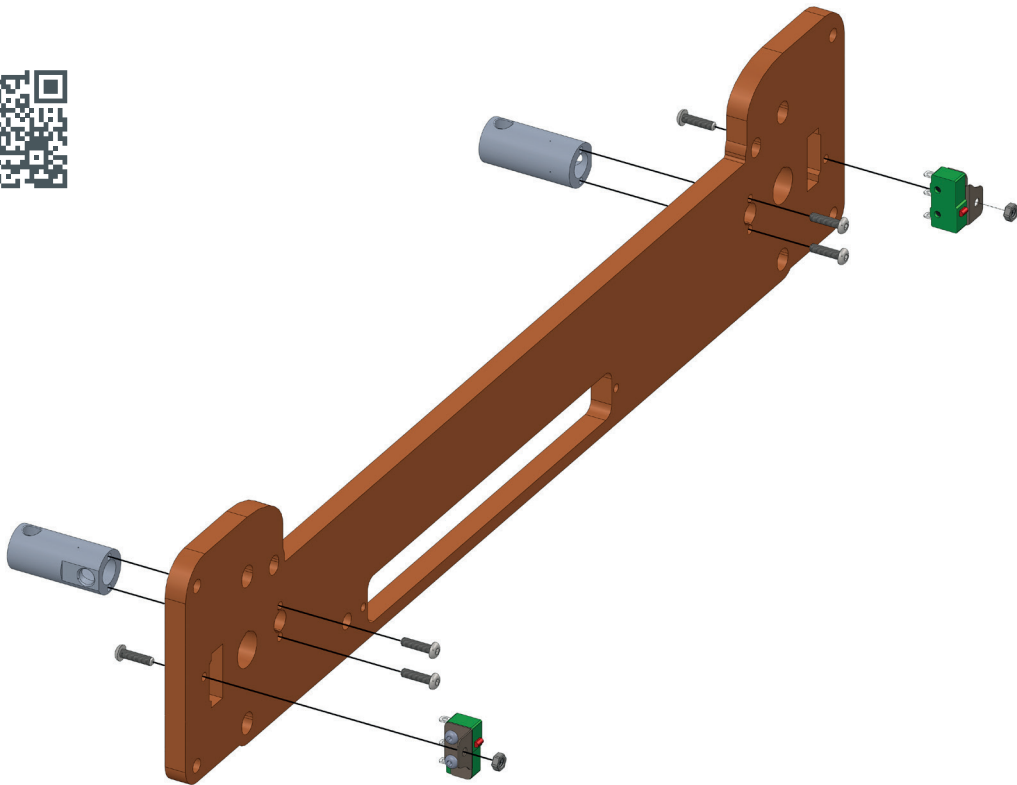




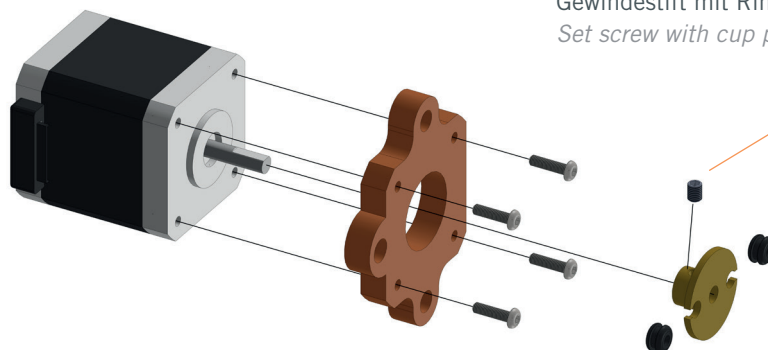
2



3



4

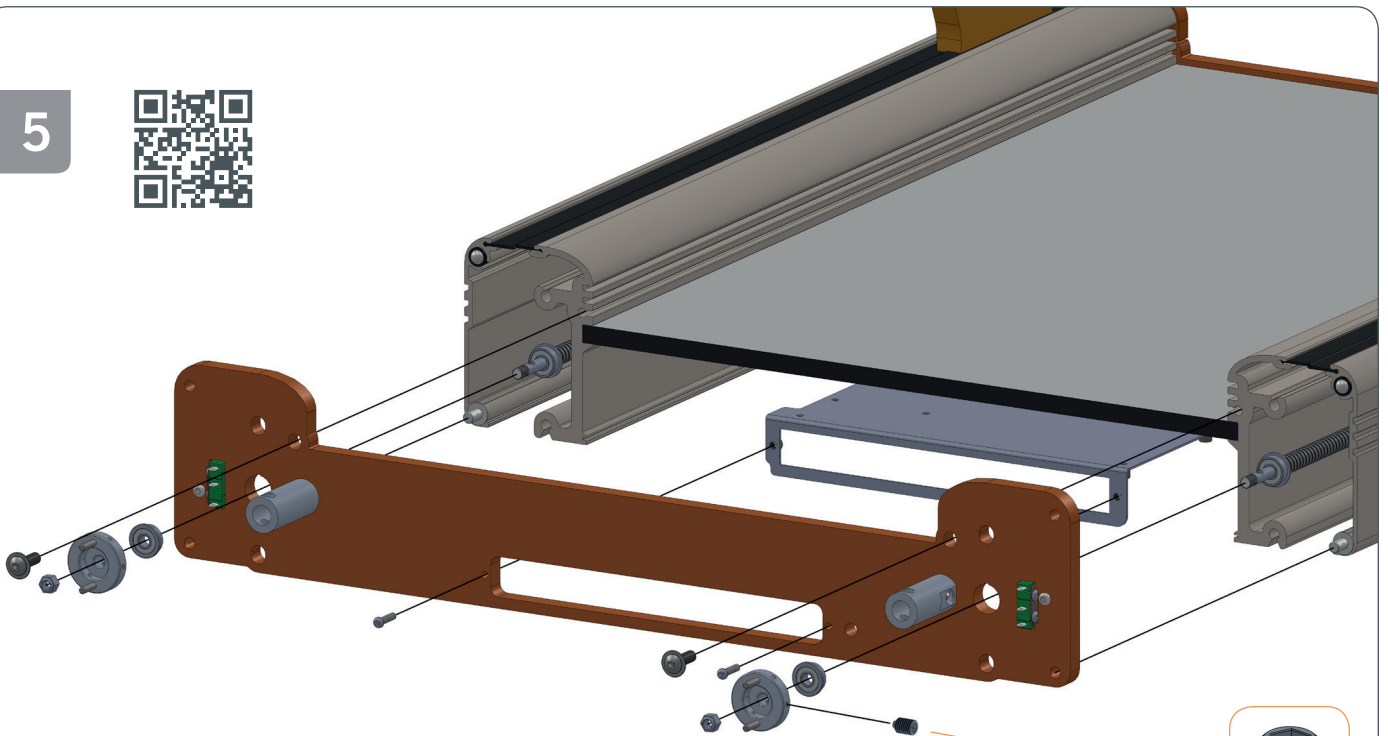


Gewindestift mit Ringschneide 4 x 4 mm
Set screw with cup point 4 x 4 mm





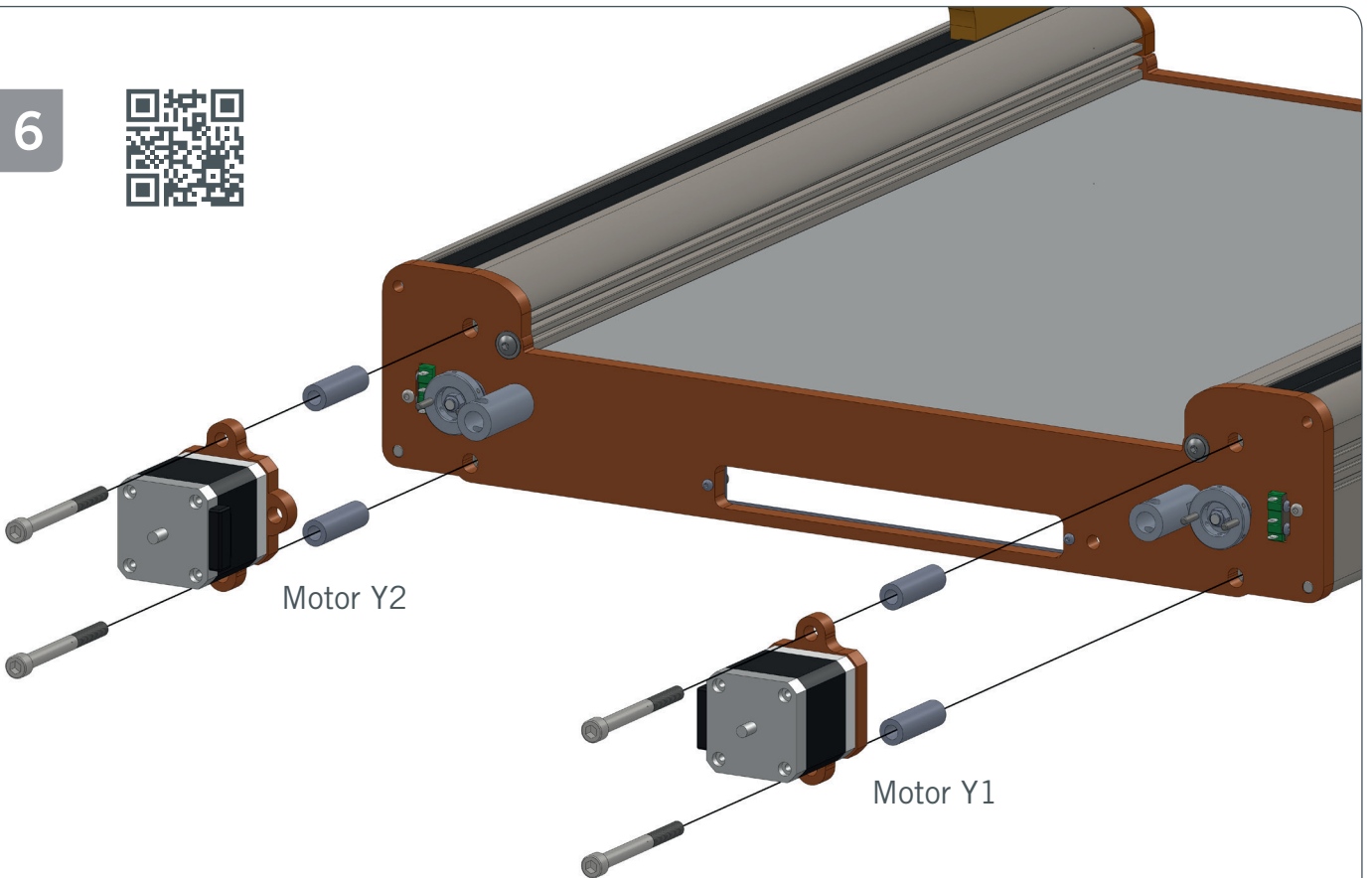
5



Gewindestift mit Zapfen 4 x 5 mm
Set screw with half dog point 4 x 5 mm

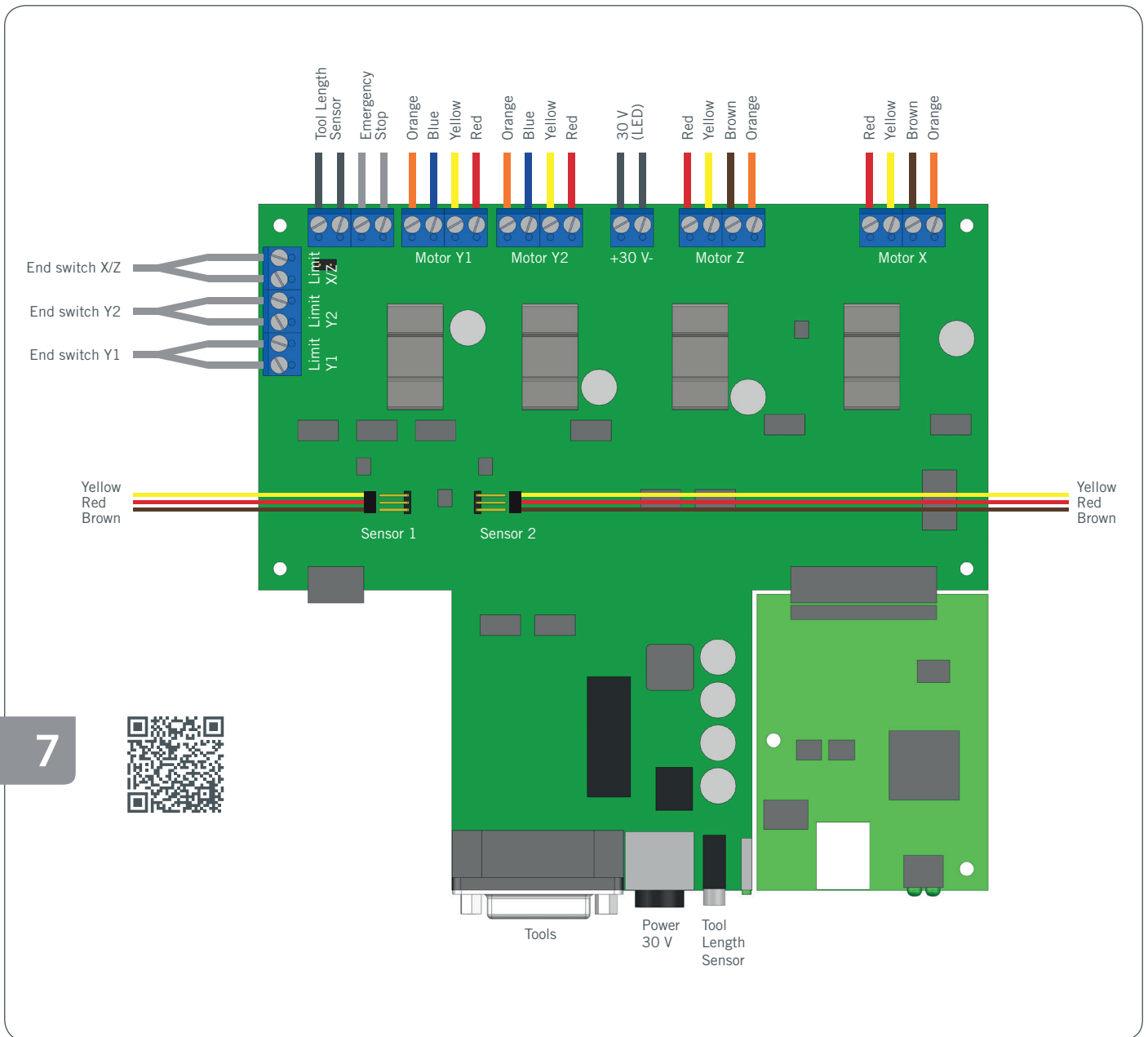


6



Motor Y2

Motor Y1



Steuerungssoftware / Control software:

Um die volle Leistungsfähigkeit des Performance-Kits auszunutzen, empfiehlt es sich, die maximale Verfahrgeschwindigkeit der Y-Achse auf 70 mm/sek (WinPC-NC) – 4200 (UCCNC) zu setzen.

„To take advantage of the full capacity of the performance kit, it is recommended to set the maximum traversing speed of the Y axis to 70 mm/sec (WinPC-NC) – 4200 (UCCNC).“