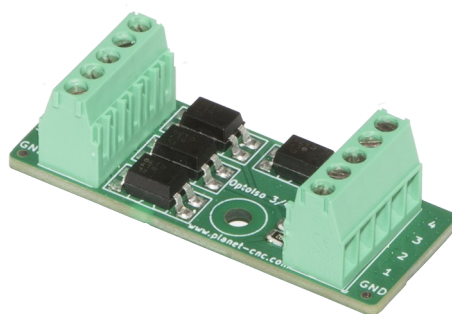




# Optolso 3/4 adapter

2022/03/24 Rev1.1



## **Disclaimer**

OPTOISO 3/4 ADAPTER IS PROVIDED TO YOU "AS IS," WITHOUT WARRANTY. THERE IS NO WARRANTY FOR THE ADAPTER, EITHER EXPRESSED OR IMPLIED, INCLUDING, BUT NOT LIMITED TO, THE IMPLIED WARRANTIES OF MERCHANTABILITY AND FITNESS FOR A PARTICULAR PURPOSE AND NONINFRINGEMENT OF THIRD PARTY RIGHTS. THE ENTIRE RISK AS TO THE QUALITY AND PERFORMANCE OF THE DEVICES IS WITH YOU. SHOULD THE HEIGHT SENSOR OR HEIGHT CONTROLLER PROVE DEFECTIVE, YOU ASSUME THE COST OF ALL NECESSARY SERVICING, REPAIR OR CORRECTION.

IN NO EVENT SHALL THE AUTHOR BE LIABLE TO YOU FOR DAMAGES, INCLUDING ANY GENERAL, SPECIAL, INCIDENTAL OR CONSEQUENTIAL DAMAGES ARISING OUT OF THE USE OR INABILITY TO USE OPTOISO 3/4 ADAPTER.

# Introduction

## Overview

Optolso 3/4 adapter is a device that opto-isolates Mk3/4 controller inputs from external devices such as limit switches, proximity sensors, input switches, probes and similar devices.

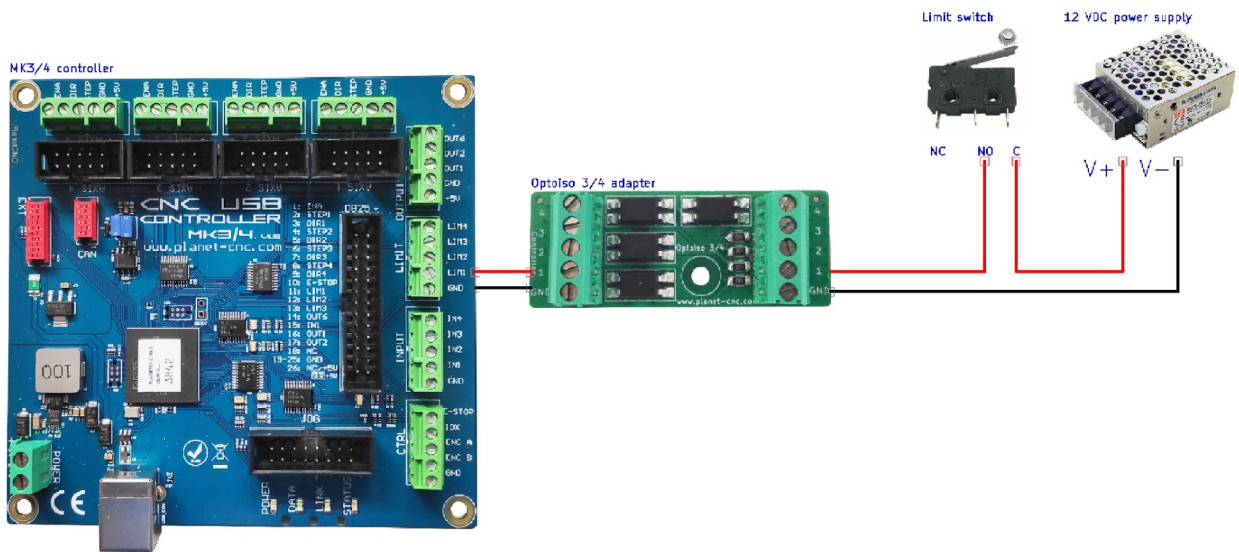
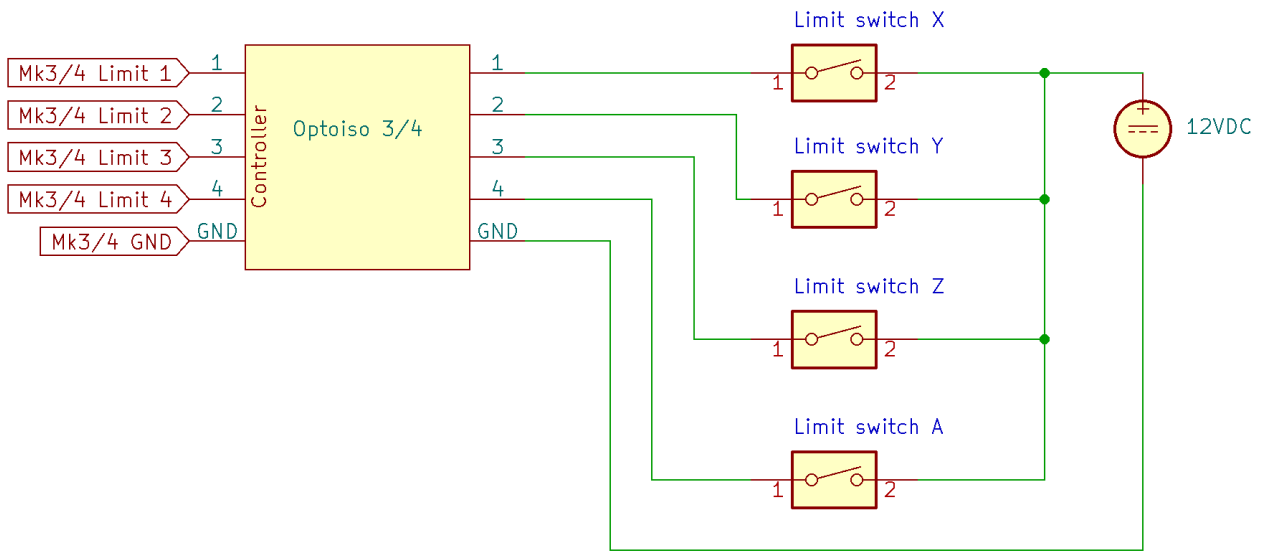
Its main function is to protect the input circuitry of Mk3/4 controller from any damage that may occur due to improper wiring or power surges at the side of externally connected device. Also, using this adapter reduces electrical noise influence at controller inputs and makes up for easy connection of proximity switches.

## Features and specifications:

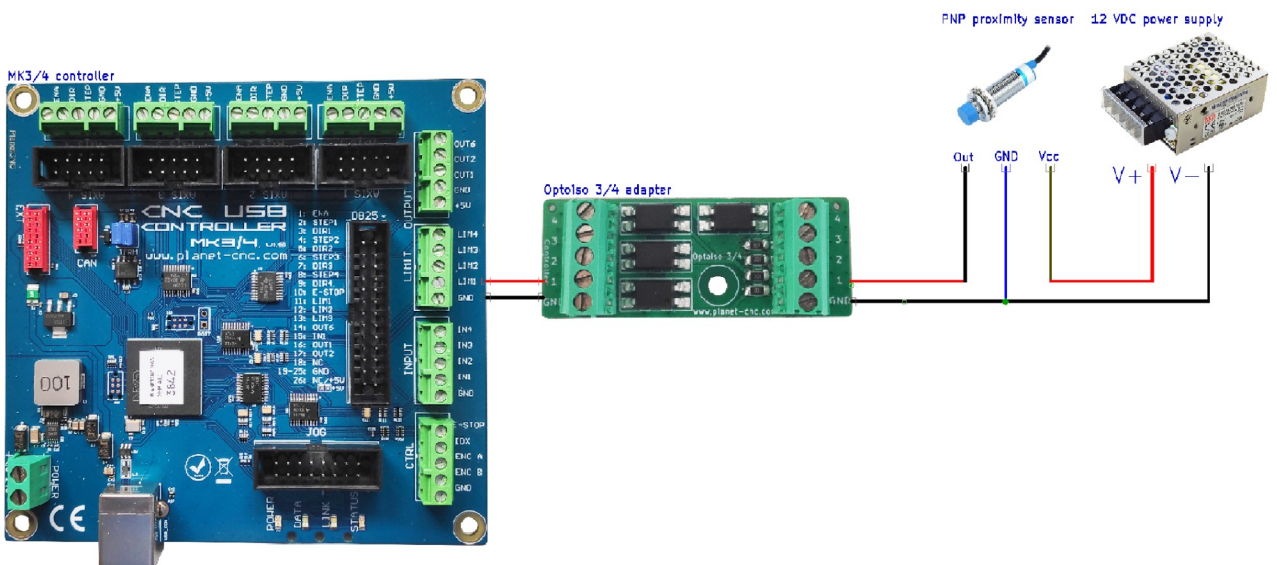
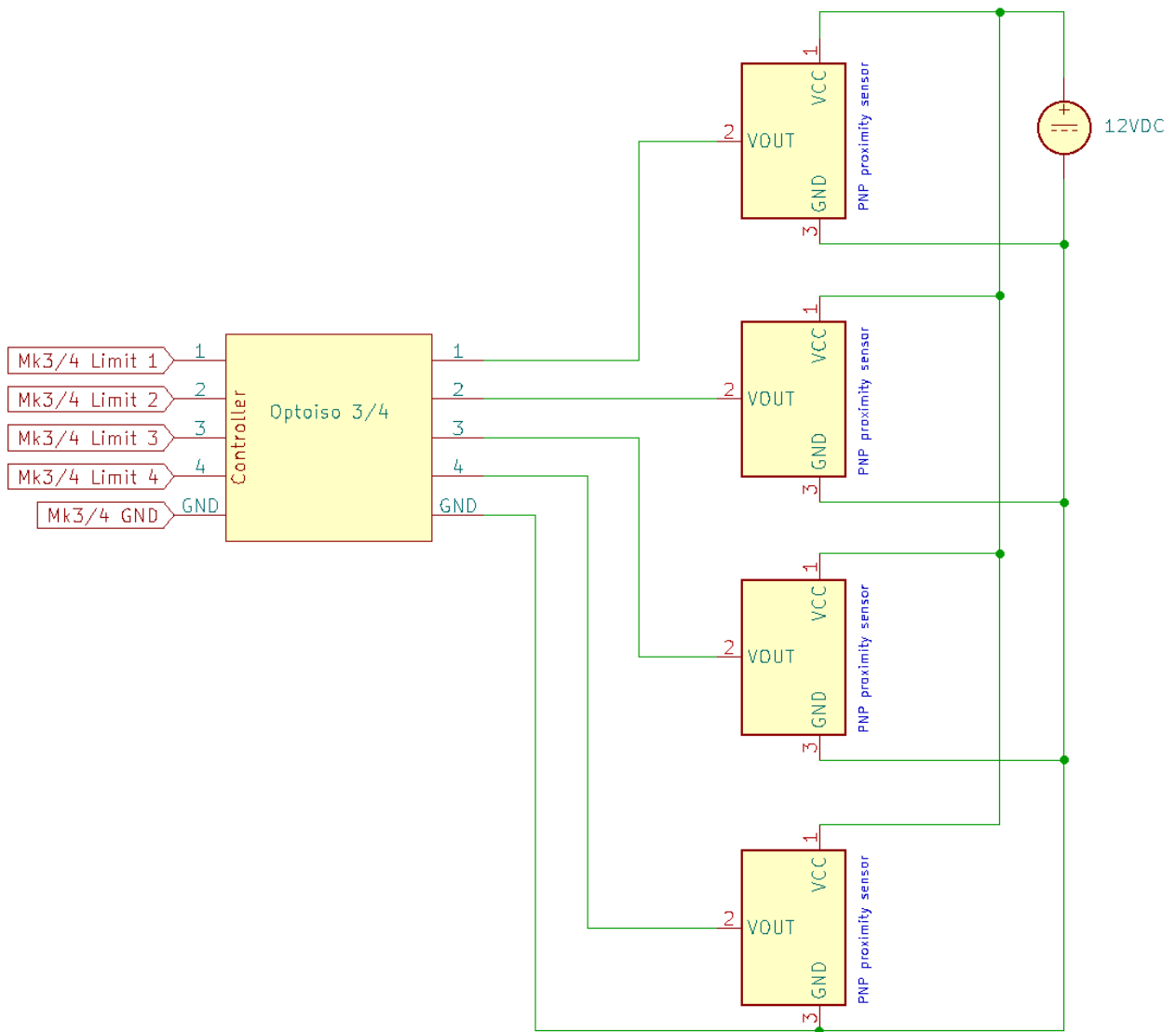
- Single adapter offers 4 opto-isolated input channels
- Allows connection for up to 4 limit switches, push-buttons, probes, PNP proximity sensors and similar devices
- Each input corresponds to its dedicated open collector output
- Max voltage value of input signal is 24VDC
- It can be used as a simple voltage level translator where you need to connect devices that function at different voltage levels (5V, 12V, 24V)
- Adapter was designed specifically for Mk3/4 controller but it can be used with any other board that needs opto-isolated inputs.

# Connection diagrams

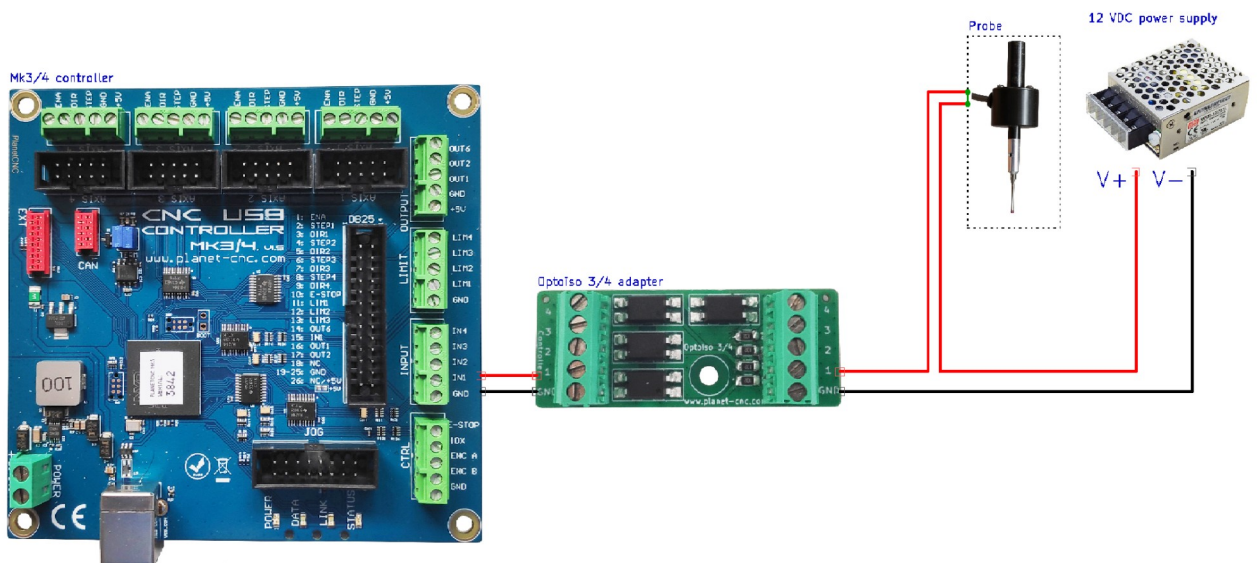
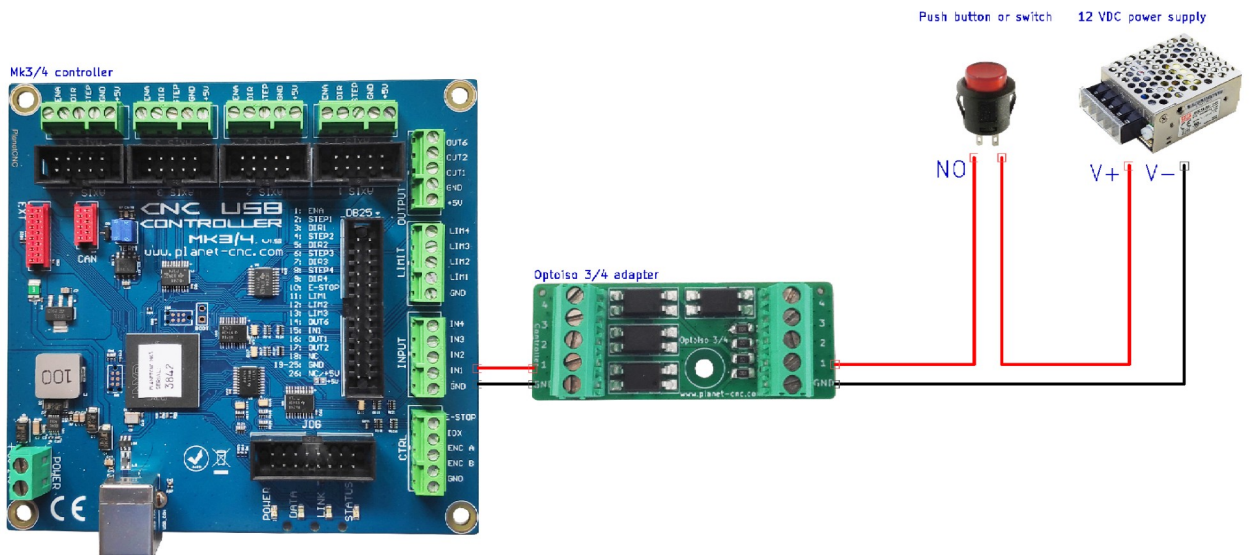
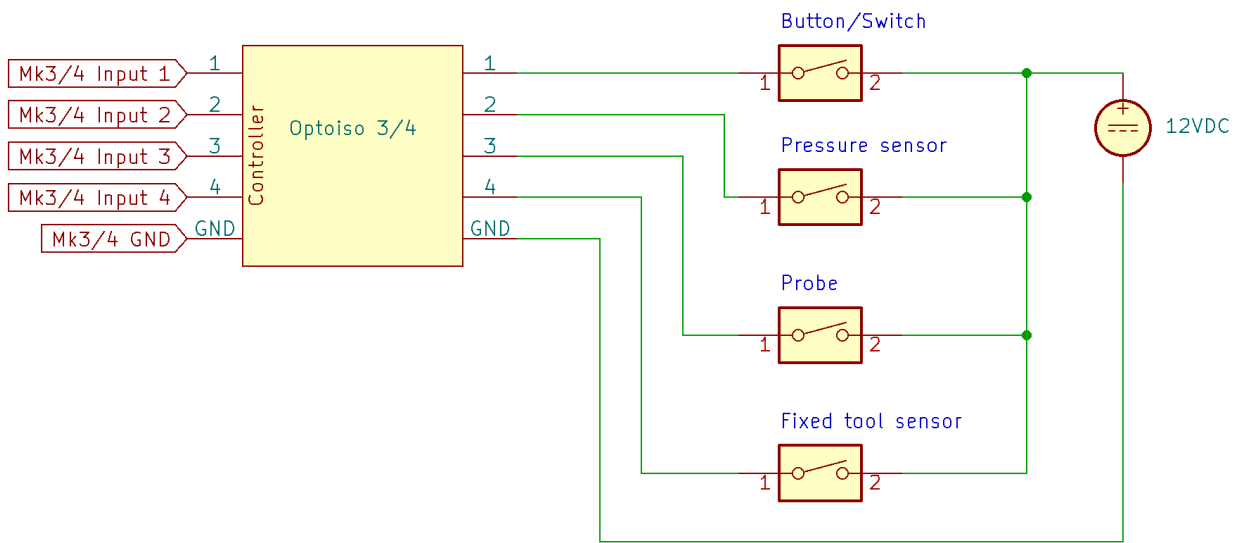
## Connection of limit switches



# Connection of PNP proximity sensors



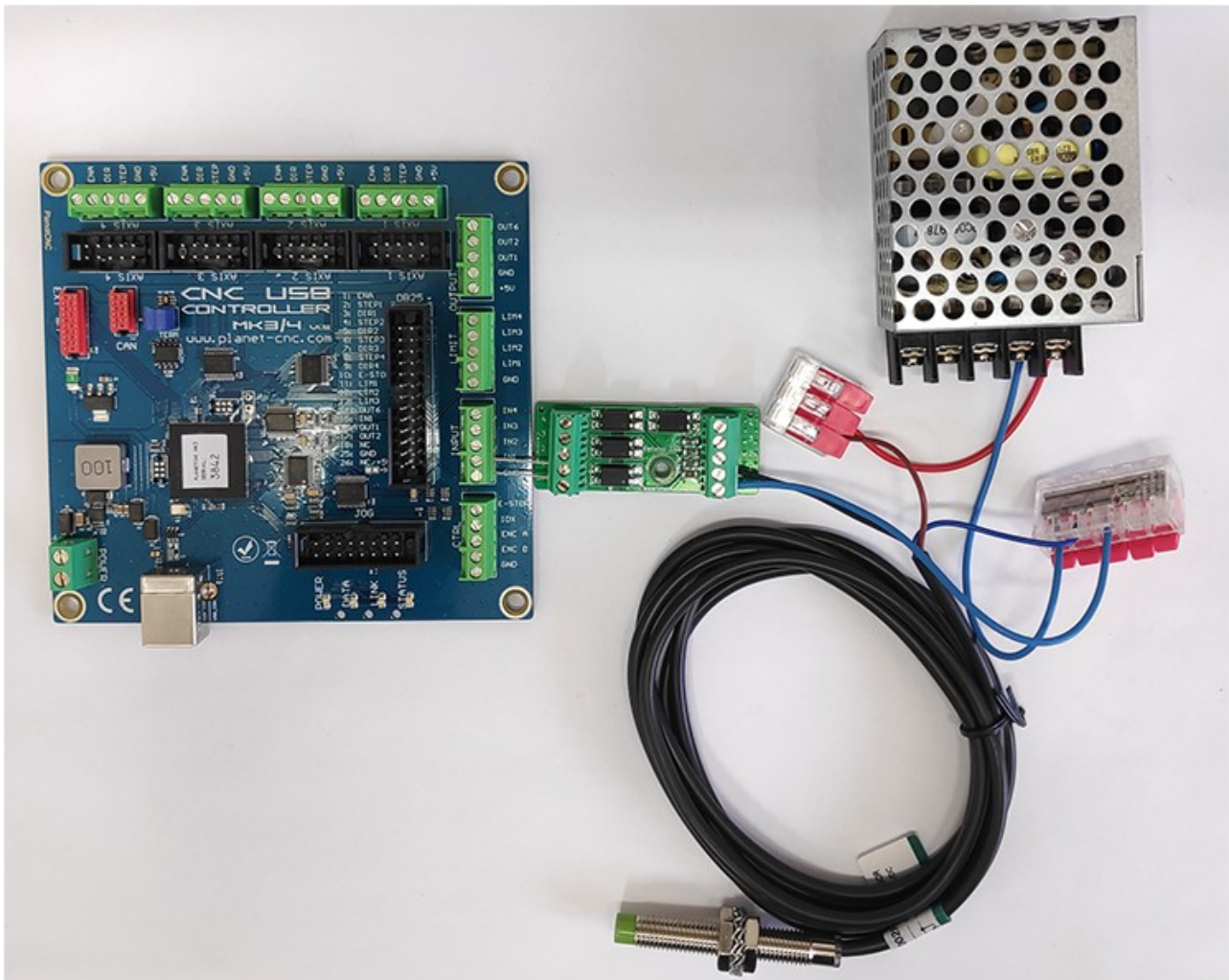
# Connection of various switching devices



## Typical application

PNP proximity sensor with Optoliso 3/4 adapter board and Mk3/4 controller.

Splicing connector is included with adapter board.





# Table of Contents

Introduction.....	3
Overview.....	3
Features and specifications:.....	4
Connection diagrams.....	5
Connection of limit switches.....	5
Connection of PNP proximity sensors.....	6
Connection of various switching devices.....	7
Typical application:.....	8