

# GHBH Series

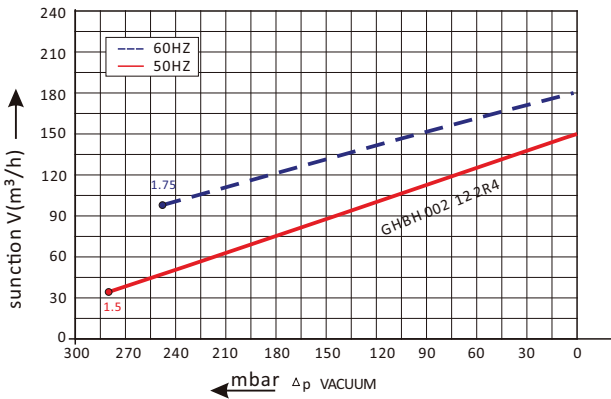
## GHBH 002 12 2R4

### Technical datasheet

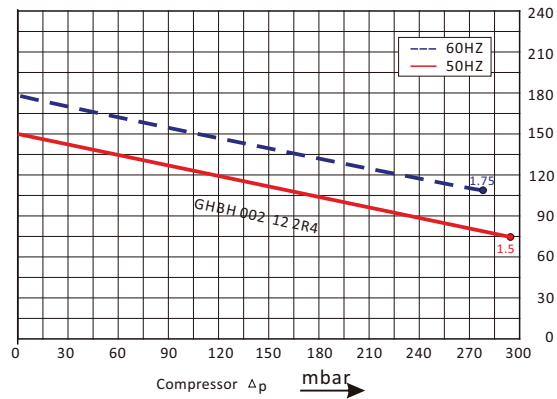


#### Goorui blower performance curves

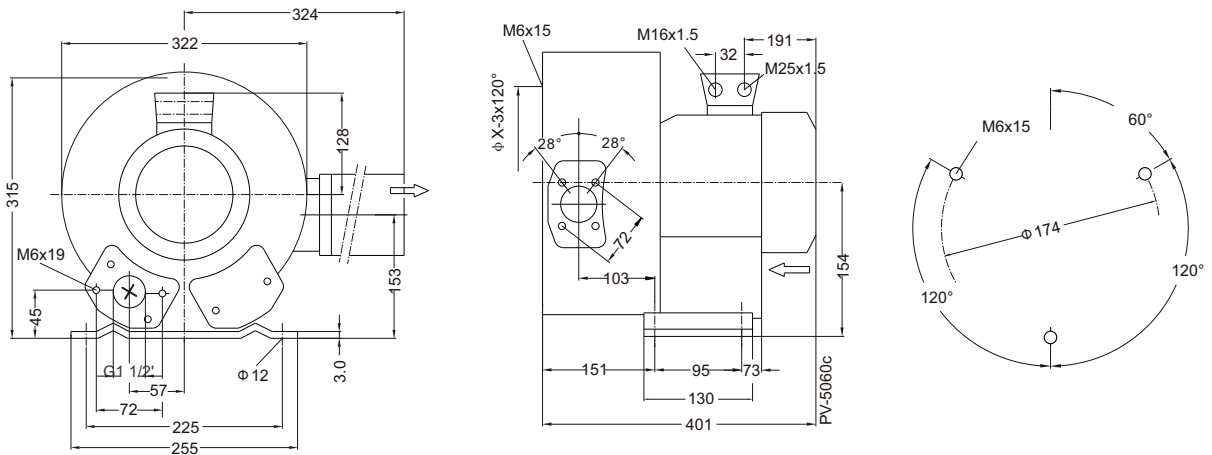
Vacuum selection diagram curve



Compressor selection diagram curve



#### Goorui blower installation drawing



#### Goorui blower parameter

Model	Frequency	Output	voltage	Current	airflow	pressure		noise	Weight
						vacuum	compressor		
	HZ	KW	V	A	m <sup>3</sup> /h	mbar	mbar	dB(A)	kg
<b>1~ 50/60Hz IP54 INSULATION class F</b>									
GHBH 002 12 2R4	50	1.5	230	9.0	150	-280	290	66	26
GHBH 002 12 2R4	60	1.75	230	10.0	180	-250	280	69	26

The performance curves of Goorui blower is tested through below ways:

Under one atmospheric pressure, suck 15°C air and then you can calculate the data, of course allow 10% difference, and when the sucked air and surroundings temperature are not higher than 25°C, you still can get total pressure difference as the curves shows.