

Nut-Housing for Ball-Spindle-Nuts



Fig.: 1204



Fig.: 16H, 20H

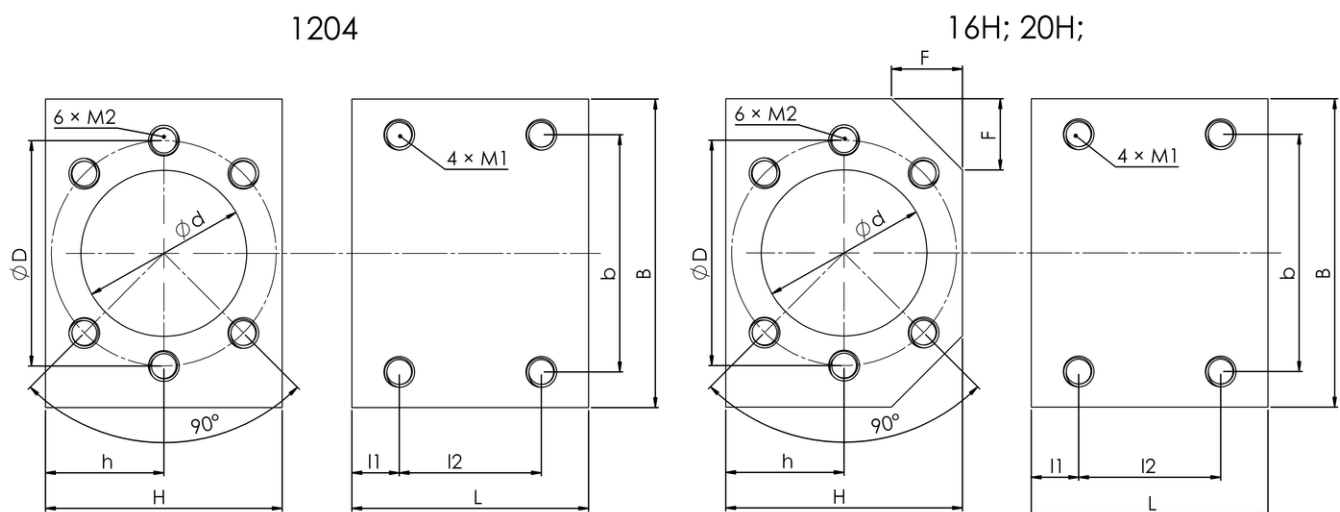
1. Features

- Milled nut housing suitable for ball spindle nuts 1204, 1605, 1610, 2005, 2010
- Material: Aluminium

2. Description

The nut housing is suitable for mounting ball spindle nuts with flange. The bore pattern and the diameter are matched to the respective ball spindle nuts. The holder can be mounted at one side with 4 metric screws each. Screws are not included in the scope of delivery.

3. Technical Data



Article	suitable for ball spindle nuts	d	B	H	h	F	L	l1	l2	b	M1	D	M2
1204	1204	24	50	30	15	/	36	6	24	35	M5 \downarrow 13	32	M4 \downarrow 12
16H	1605 1610	28	52	40	20	12	40	8	24	40	M5 \downarrow 12	38	M5 \downarrow 12
20H	2005 2010	36	62	44	22	12	40	8	24	48	M6 \downarrow 12	47	M6 \downarrow 12
Tolerances		+0,05	+0,1	+0,15	+0,02	+0,1	+0,1	+0,05	+0,1	+0,1	/	+0,1	/
		+0,02	-0,1	-0,15	-0,02	-0,1	-0,1	-0,05	-0,1	-0,1		-0,1	

4. Scope of delivery

- Nut Housing