

FKXX

Fixed Bearing Flange



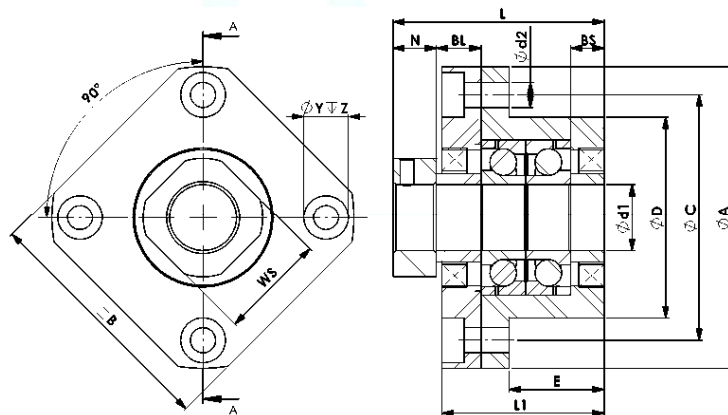
1. Features

- Two angular contact ball bearings in O-arrangement
- Black coated Block
- Sealing on both sides
- Flange with flexible ring to hold the ball bearings axially in position
- Square Nut with locking screw to fix.

2. Description

In the fixed bearing flange, a spindle is held in position without play by the use of two angular contact ball bearings in an O arrangement. When clamping the bearings, only the end faces of the outer rings are in contact with each other due to the inserted spacer. This is the only way to ensure correct clamping. The bearings are clamped to the spindle with the fastening nut supplied. This prevents axial play. Sealing rings on both sides ensure that no lubricant can escape or dirt get into the bearings.

3. Mechanical Dimensions



Art.No. 0510-003-	Name	Dimensions in mm														
		d1	L	L1	N	BL	BS	D	C	A	E	d2	B	Y	Z	WS
0206	FK10	10	38	29	7	8	6	34	42	52	17	4,5	42	8	4	16
0202	FK12	12	39	29	7	8	6	36	44	54	17	4,5	44	8	4	19
0208	FK15	15	42	32	7	9,5	6,5	40	50	63	17	5,5	52	9,5	6	22
Tolerances			+1	+0,3	+0,2	+0,2	+0,2	g6	+0,2	+0,2	+0,2	+0,1	+0,5	+0,1	+0,1	+0
			-1	-0,3	-0,2	-0,2	-0,2		-0,2	-0,2	-0,2	-0,1	-0,5	-0,1	-0,1	-0,5

4. Scope of delivery

- Bearing Block, preassembled with 2 angular contact all bearings and flange for fixing
- Square Nut with clamping screw

5. Further Information

	Used Bearing	Suitable for
FK10	2 x 7000AC	Ball Spindle SFU 1204, Art.Nr.: 1001-204-XXXX
FK12	2 x 7001AC	Ball Spindle SFU 1605-1610 Art.Nr.: 1001-605-XXXX; 1001-610-XXXX
FK15	2 x 7002AC	Ball Spindle SFU 2005-2010 Art.Nr.: 1002-005-XXXX; 1002-010-XXXX;