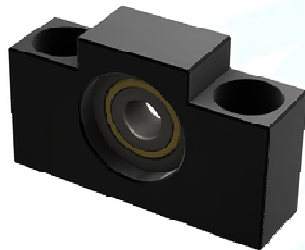


AFXX

Floating Bearing Block



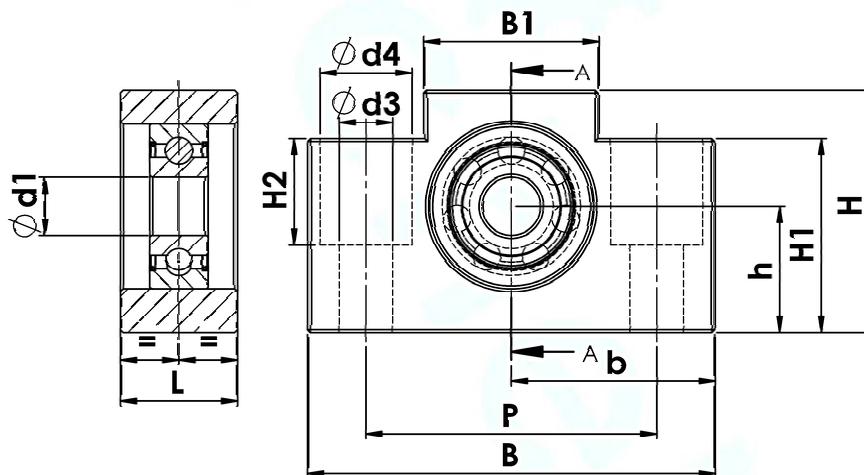
1. Features

- A deep groove ball bearing for absorbing radial forces.
- Black coated block with hole to hold the ball bearing in radial position
- Circlip

2. Description

In the floating bearing block, a spindle is held radially by the use of a deep groove ball bearing. When the spindle is secured with the retaining ring supplied, the spindle is held radially in position while the axial position remains variable. Axial fixation is only possible through combination with a locating bearing on the opposite side.

3. Mechanical Dimensions



Art.No. 0510-003-	Name	Dimensions in mm										
		d1	B	B1	H	H1	b	h	d3	L	d4	H2
0409	AF06	6	42	18	25	20	21	13	5,5	12	9,5	11
0411	AF08	6	52	25	32	26	26	17	6,6	14	10,6	10
Tolerances			0	+0,2	+0,2	+0,2	+0,2	+0,02	+0,1	+0,3	+0,1	+0,2
			-0,5	-0,2	-0,2	-0,2	-0,2	-0,02	-0	-0,3	-0	-0,2

4. Scope of Delivery

- Bearing block, pre-assembled with deep groove ball bearing.
- One Circlip to fix

5. Further Information

	Used Bearings
AF 06	606ZZ
AF 08	606ZZ