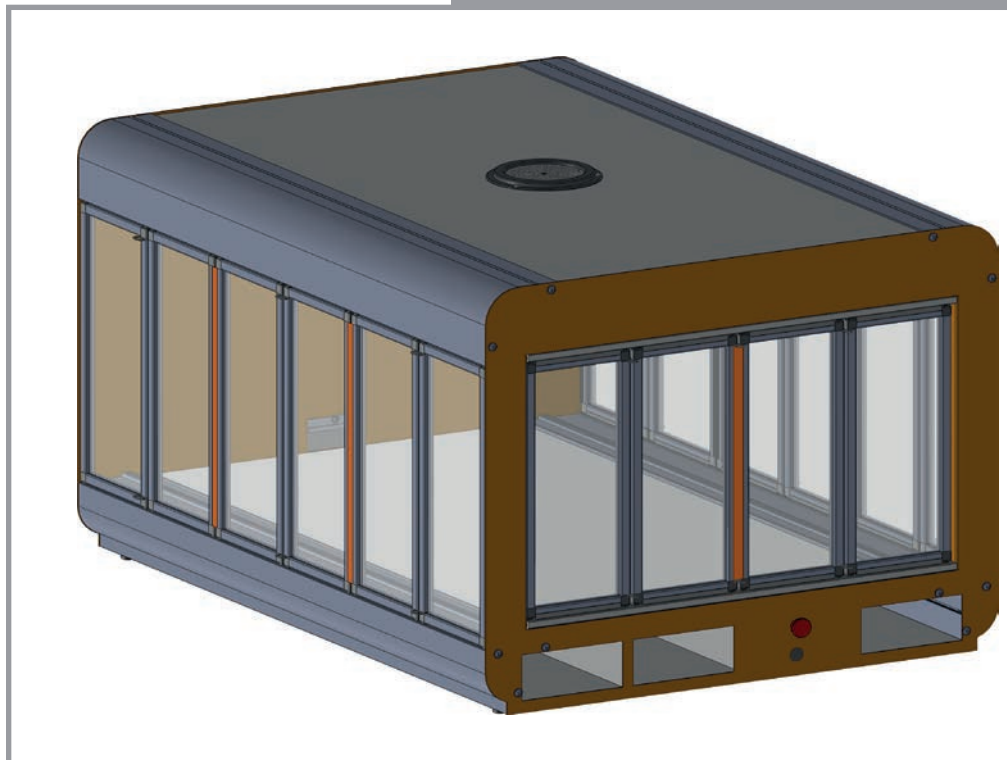


EASYBUILD- BAUANLEITUNG

UMHAUSUNG FÜR STEPCRAFT DESKTOP-CNC-/3D-SYSTEME BAUGRÖSSE 600/ 840



Original-Bauanleitung
Stand 01.07.2017

Lieber Kunde,

vielen Dank für den Kauf dieses qualitativ hochwertigen Bausatzes für eine Umhausung Ihres **STEPCRAFT** Desktop-CNC-/3D-Systems. Diese Anleitung führt Sie Schritt für Schritt durch den Aufbau.

Lesen Sie bitte vor dem Aufbau die gesamte Anleitung vollständig durch. Dadurch erhalten Sie einen Gesamtüberblick über die Tätigkeiten des Aufbaus und vermeiden ggf. unnötige Fehler. Beachten Sie genau, dass Sie die richtigen Teile in der richtigen Ausrichtung benutzen, einige Teile sind nur minimal unterschiedlich. Bitte nehmen Sie eine zweite Person bei der Montage zur Hilfe.

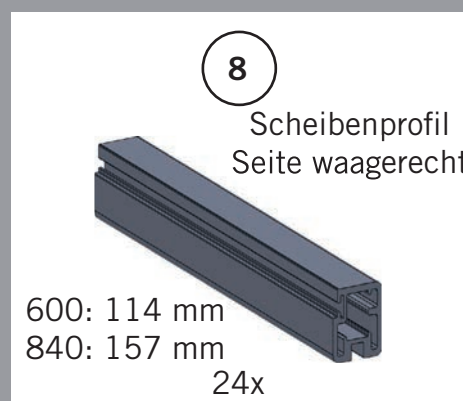
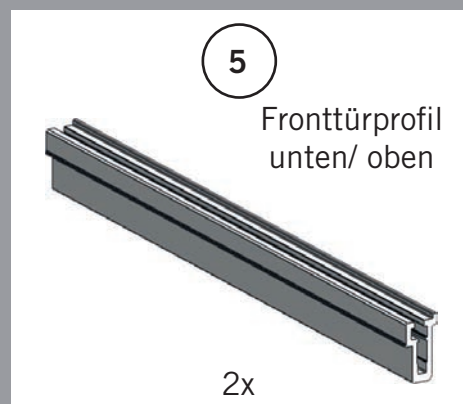
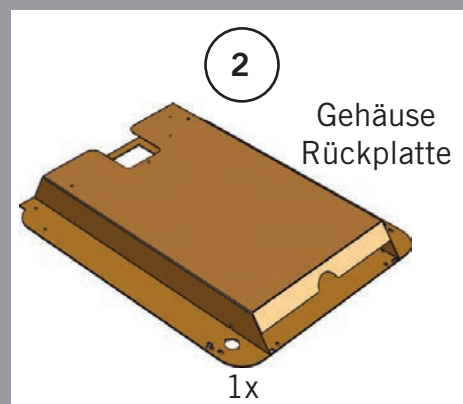
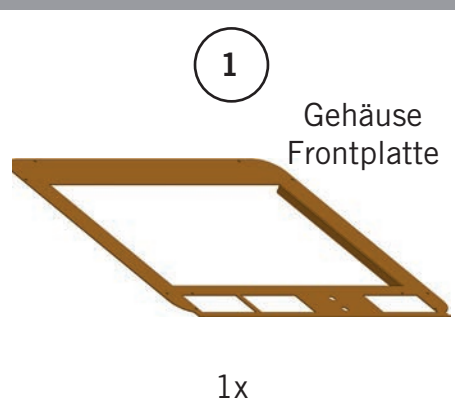
Prüfen Sie mithilfe der folgenden Liste die Vollständigkeit des Bausatzes. **STEPCRAFT** bietet in verschiedenen Abschnitten der Bauanleitung Videounterstützung an. Dazu scannen Sie einfach mit Ihrem Smartphone den abgebildeten QR-Code. Sollten Sie diese Möglichkeit nicht haben, geben Sie einfach die folgende URL in den Internetbrowser ein:

www.stepcraft-systems.com/enclosure/xx-xx (ersetzen Sie xx-xx durch das Kürzel unter dem QR-Code).

Alle Angaben wurden sorgfältig erstellt und überprüft. Für eventuelle Fehler oder Unvollständigkeiten können wir jedoch keine Haftung übernehmen. Für eventuelle Schäden an Material oder Personen durch den Eigenbau der Umhausung übernehmen wir keine Haftung. Für den sicheren Betrieb Ihres **STEPCRAFT** Desktop-CNC-/3D-Systems und seiner Zusatzkomponenten sind Sie selbst verantwortlich.

Vor Inbetriebnahme der Umhausung müssen Sie die Betriebsanleitung gelesen und verstanden haben!

Inhalt des Bausatzes (Abbildungen nicht maßstabsgetreu)



10

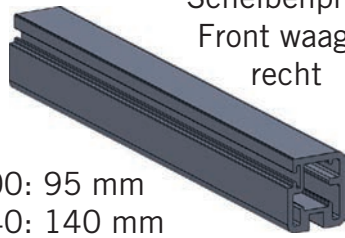
Scheibenprofil
Front senkrecht
m. Griff
372 mm



2x

11

Scheibenprofil
Front waage-
recht



600: 95 mm
840: 140 mm

8x

12

Dichtungsprofil
(Silikon)

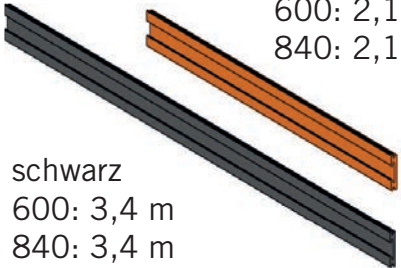


600: 6,00 m
840: 7,50 m

Gelenkprofil
(Silikon)

13

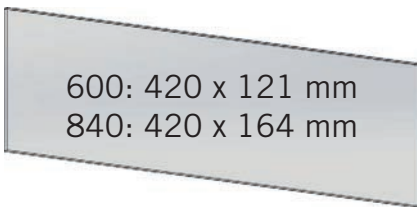
orange
600: 2,1 m
840: 2,1 m



schwarz
600: 3,4 m
840: 3,4 m

14

Seitenscheibe

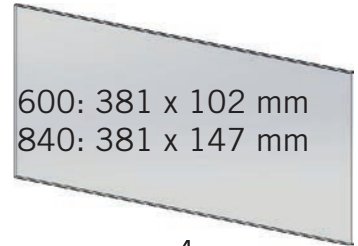


600: 420 x 121 mm
840: 420 x 164 mm

12x

15

Frontscheibe

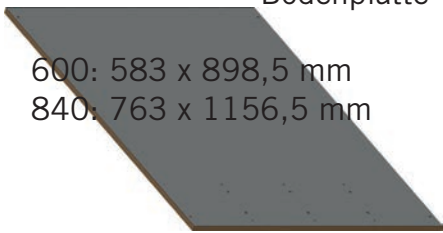


600: 381 x 102 mm
840: 381 x 147 mm

4x

16

Bodenplatte

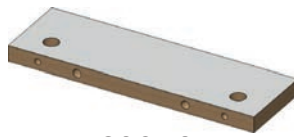


600: 583 x 898,5 mm
840: 763 x 1156,5 mm

1x

17

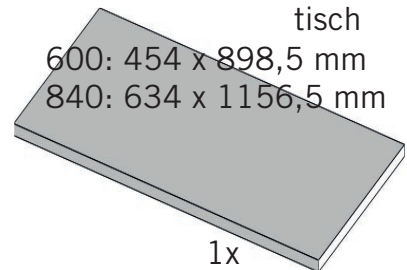
Bodenplatten-
rippe



600: 2x
840: 3x

18

Maschinen-
tisch

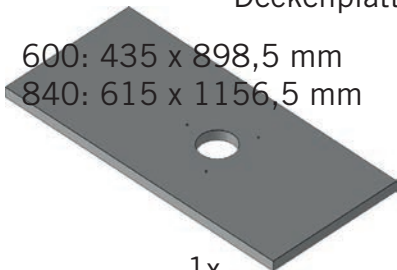


600: 454 x 898,5 mm
840: 634 x 1156,5 mm

1x

19

Deckenplatte



600: 435 x 898,5 mm
840: 615 x 1156,5 mm

1x

20

Kunststoffecke



70x

21

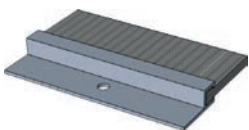
Kreisbürste



1x

22

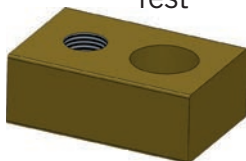
Streifenbürste
Kabelausgang



1x

23

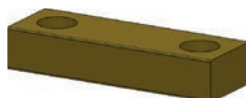
Nutenstein,
fest



6x

24

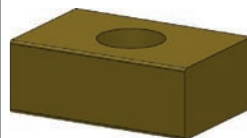
Nutenstein,
lose



10x

25

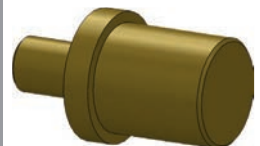
Nutenstein,
lose außen



6x

26

Gelenkzapfen



32x

27

Türgriff



16x

28

Druckstück



16x

29

Kunststofffuß



4x

30

Zylinderkopfschraube
M6 x 30 mm



4x

31

Zylinderkopfschraube
M5 x 30 mm



6x

32

Flanschkopfschraube
M5 x 12 mm



2x

33

Flanschkopfschraube
M6 x 20 mm



20x

34

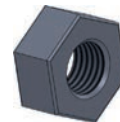
Gewindestift
M4 x 5 mm



6x

35

Mutter M5



6x

36

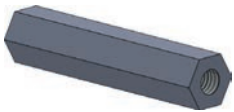
Abstandsbolzen
M3 x 10 mm



2x

37

Abstandsbolzen
M5 x 50 mm



1x

38

Linsenkopfschraube
M3 x 6 mm



4x

39

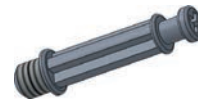
Holzdübel



600: 4x
840: 6x

40

Verbindungs-
Steckbolzen



600: 4x
840: 6x

41

Verschluss-
schraube



600: 4x
840: 6x

42

Endschalter mit
Kabelzuleitung



3x

43

Kabelschlauch
6/4 mm



600: 3,30 m
840: 4,30 m

44

Not-Aus-Schal-
ter



1x

45

Not-Aus-Kabel



600: 1,11 m
840: 1,35 m

46

Controllerpla-
tine



1x

47

Lochstopfen
8 mm



1x

48

Lochstopfen
36 mm



1x

49

15 pol. Sub-D-
Kabel



1x

50

Holzschraube
3,5 x 15 mm



3x

51

Massekabelset
inkl. Fächerschei-
be



1x

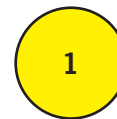
Erklärung der in der Anleitung verwendeten Symbole und Hinweise:



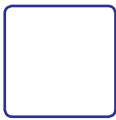
= Bauabschnitt



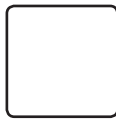
= Baugruppe



= Arbeitsschritt



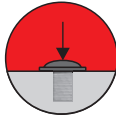
= Bauabschnittansicht



= Benötigte Bauteile für diesen Arbeitsschritt



= Vergrößerte Detailansicht/
Vormontage der Bauteile



= Schrauben festziehen.



= Schrauben nur lose einsetzen.



= Achtung! Besonders sorgfältig arbeiten.



= Im Uhrzeigersinn festdrehen.



= Schutzfolie lösen und selbstklebendes Bauteil aufkleben.



= Bauteil mit Sekundenkleber fixieren, sparsam verwenden, darf nicht auf Lauf- und Lagerflächen gelangen.



= Entgraten.



= Etwas Spülmittel auf die gezeigte Stelle auftragen.

Benötigtes Werkzeug und Material:



- Nadelfeile (wird mitgeliefert)
- Inbusschlüssel 2,0 mm
- Inbusschlüssel 3,0 mm
- Inbusschlüssel 4,0 mm
- Inbusschlüssel 5,0 mm

- Maulschlüssel 5,5 mm
- Maulschlüssel 8 mm
- Gummihammer
- Kreuzschlitzschraubendreher
- Sekundenkleber

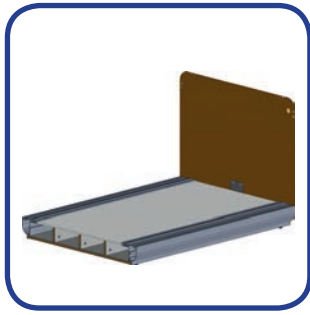
Unterschiede bei den Baugrößen 600 und 840:

Die Abbildungen in dieser Bauanleitung sind exemplarisch und basieren auf der Umhausung für die Baugröße 840.

Bitte beachten Sie auch die unterschiedlichen Maße der einzelnen Bauteile!

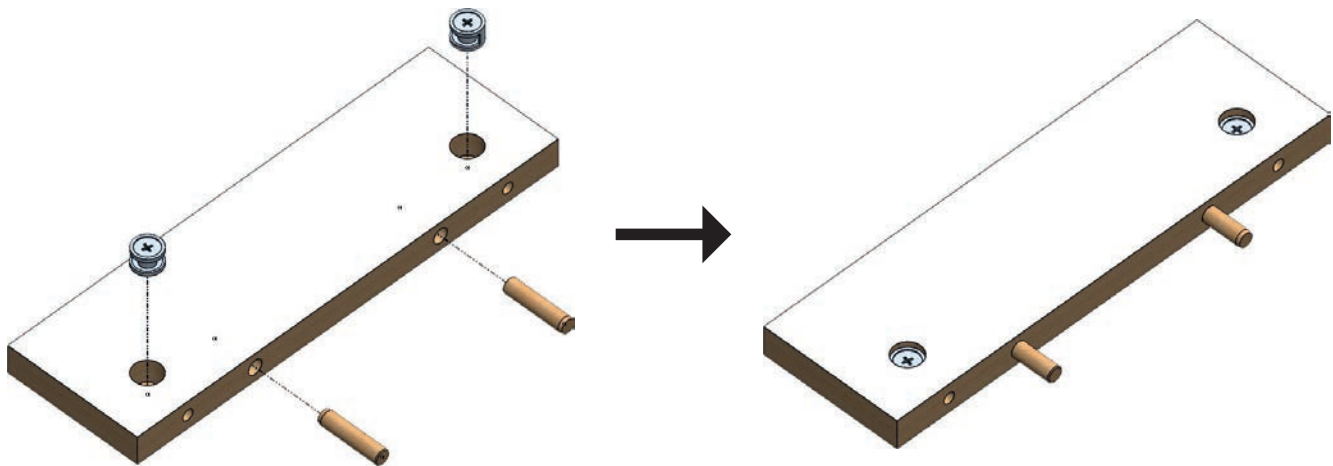
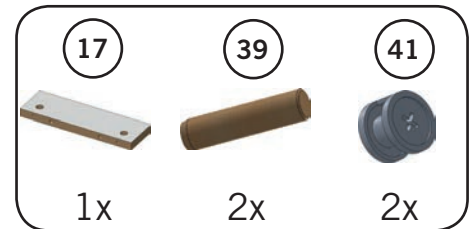


1



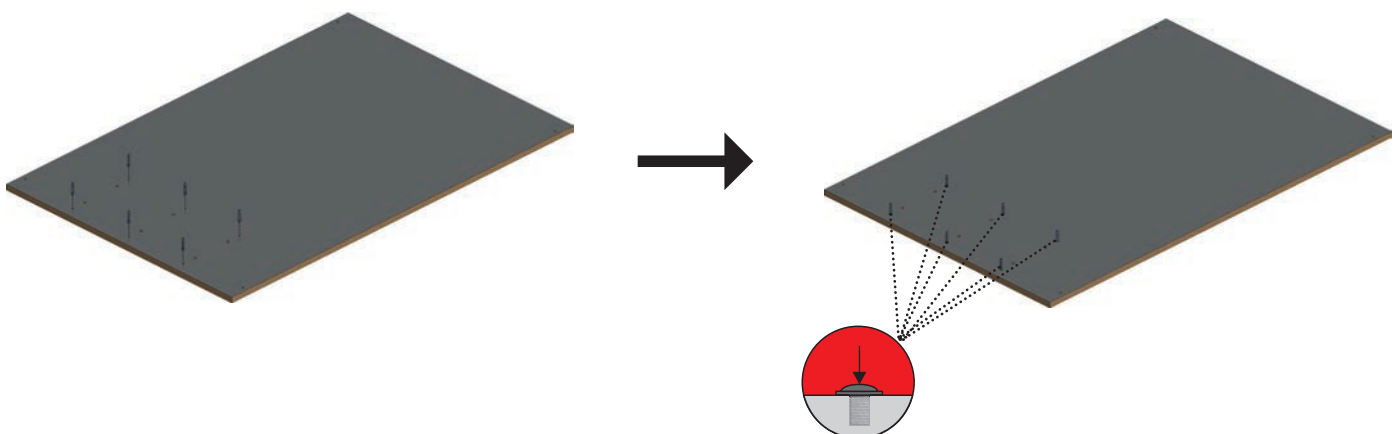
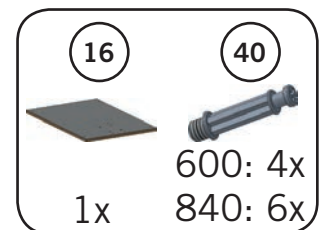
Grundrahmen

A

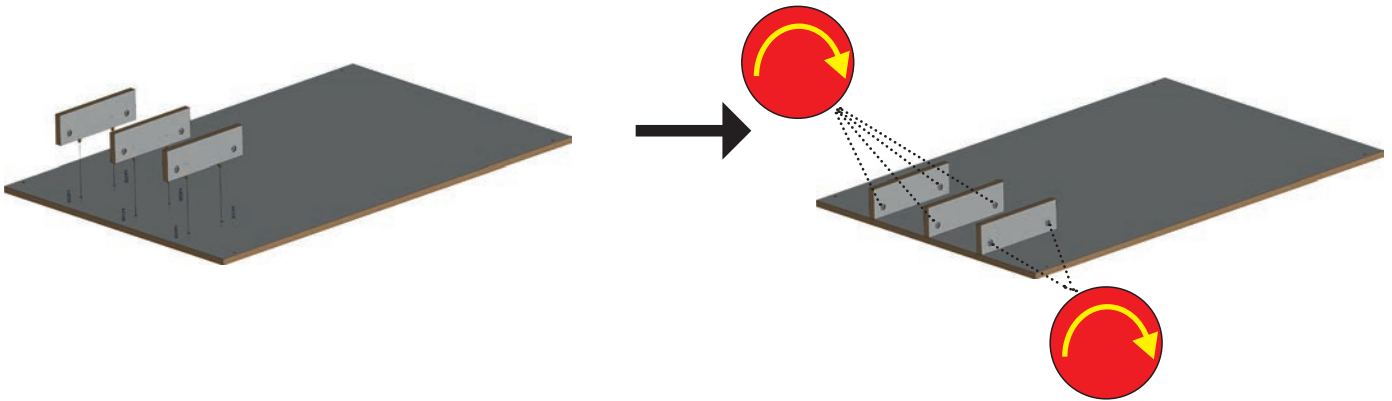
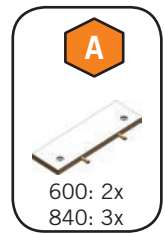


! Baugröße 600: Bitte 2x anfertigen !
! Baugröße 840: Bitte 3x anfertigen !

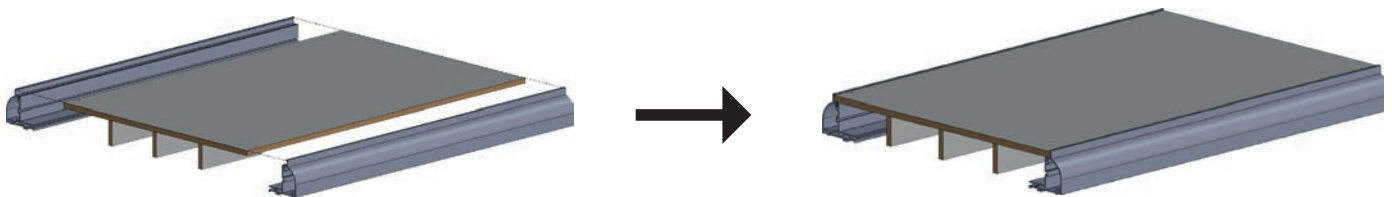
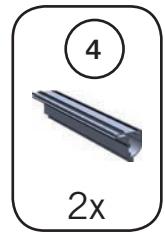
1.1



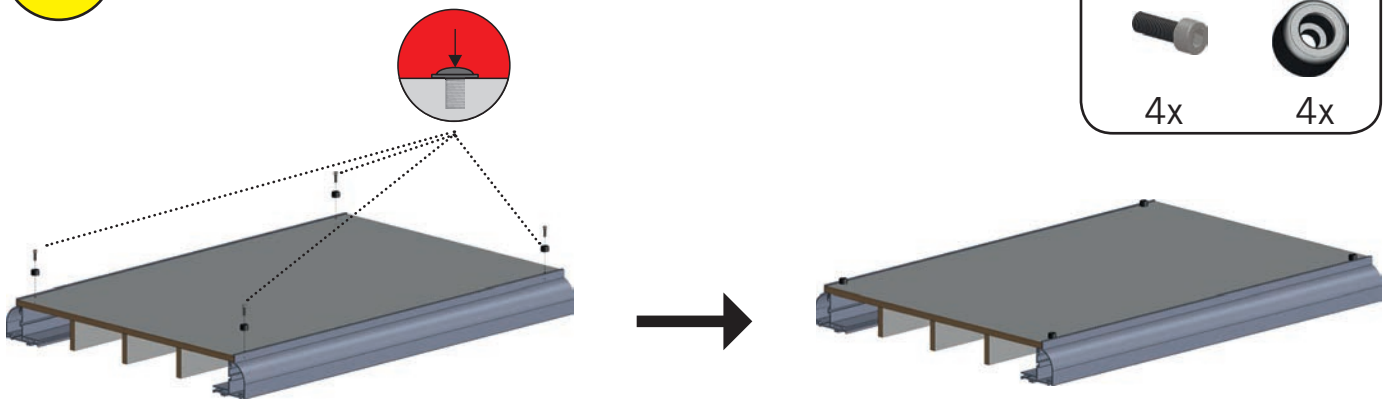
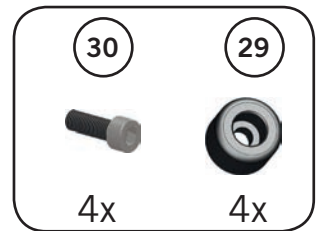
1.2



1.3

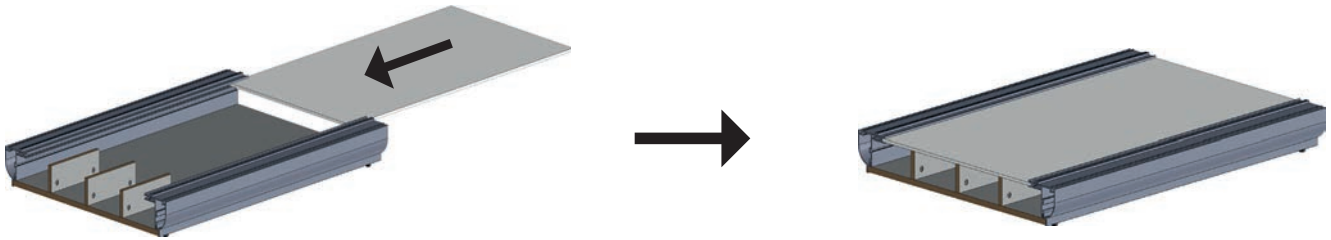


1.4



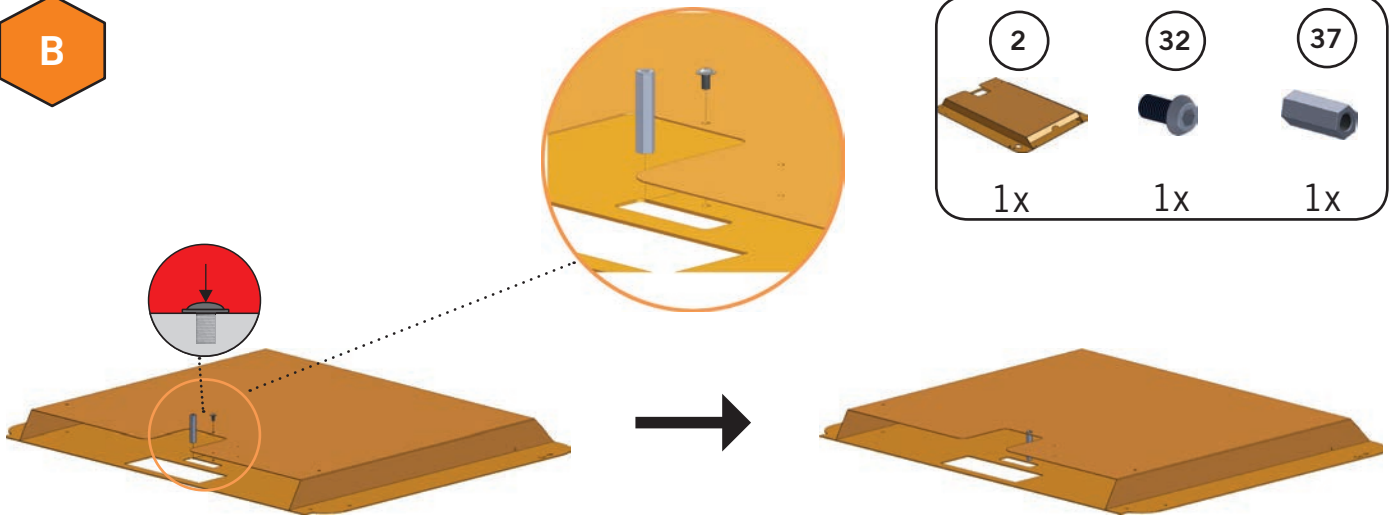
1.5

18
1x



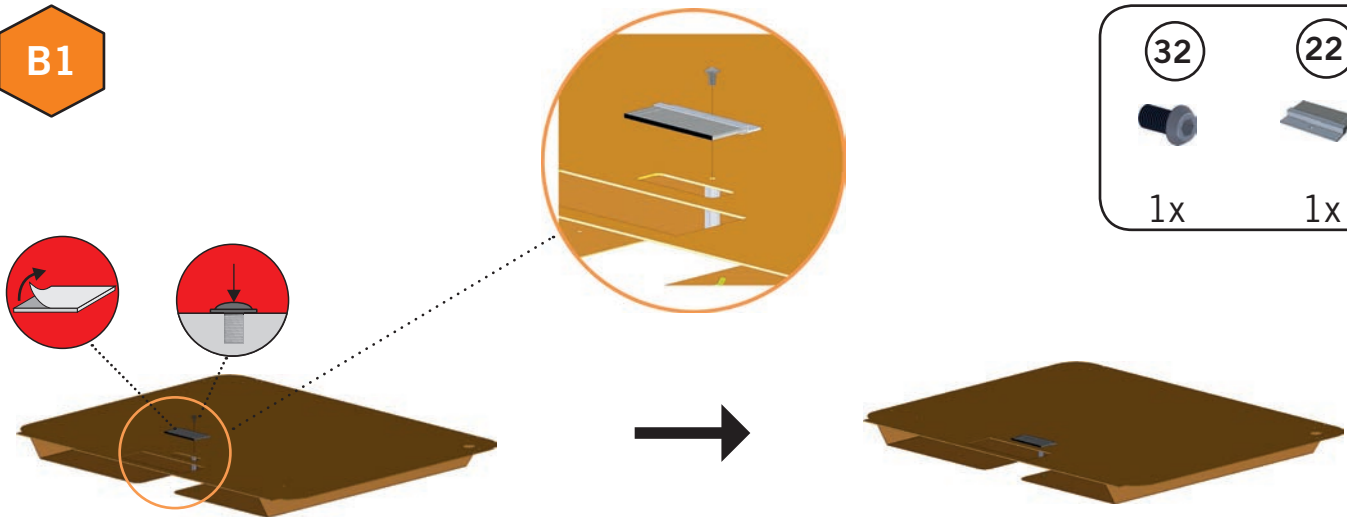
B

2 32 37
1x 1x 1x

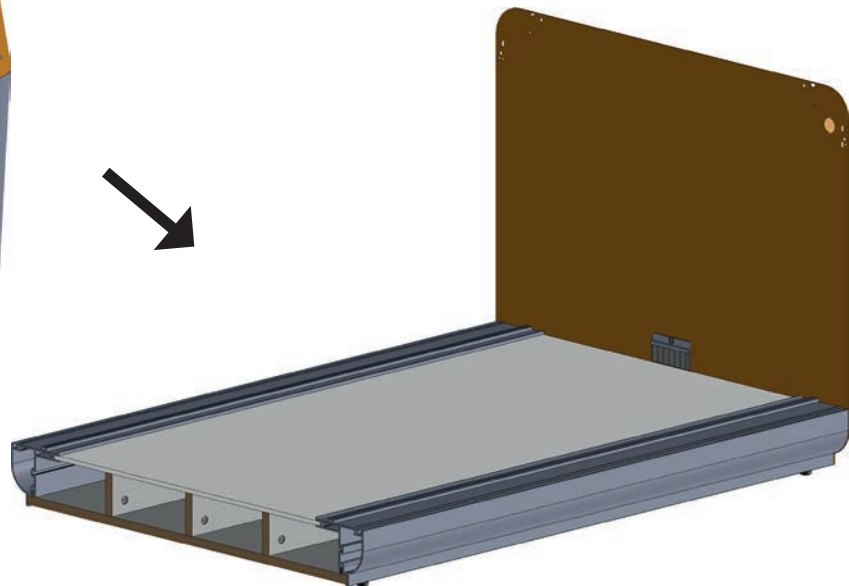
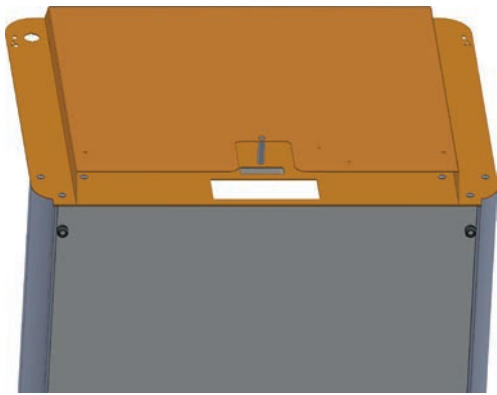
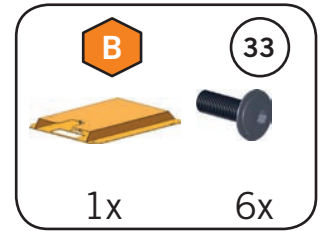
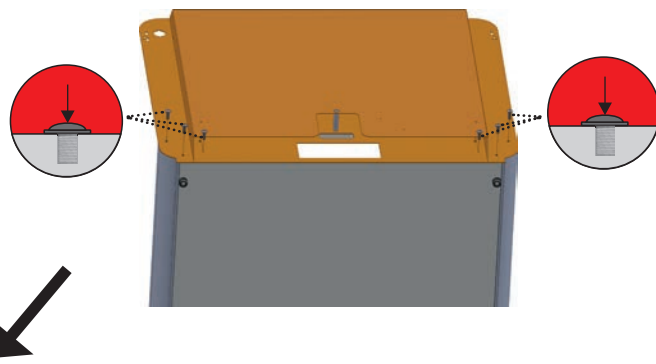


B1

32 22
1x 1x



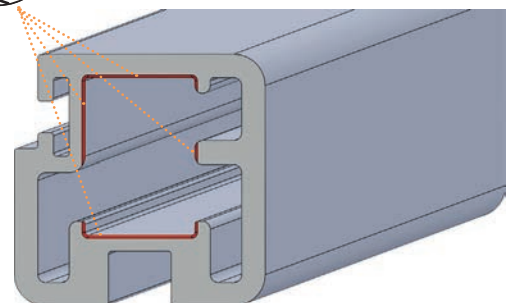
1.6



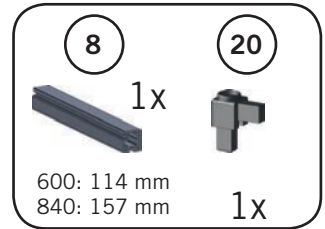
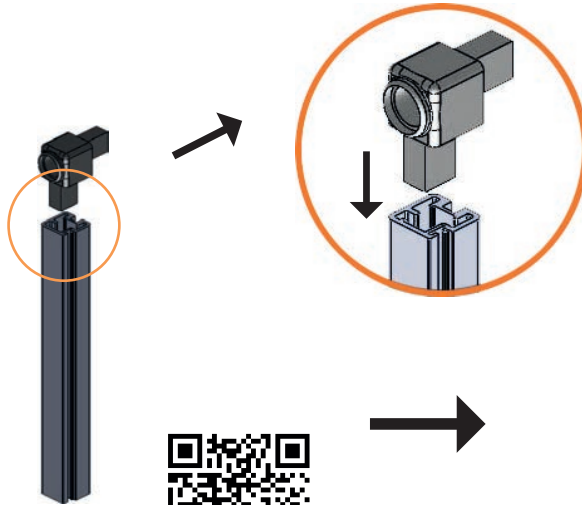
Vorbereitende Maßnahmen für alle Türen:



Bei der Montage der Kunststoffecken ist es besonders wichtig, dass bevor diese montiert werden, sämtliche Profile an den Führungskanten mit der im Bausatz enthaltenen Nadelfeile entgratet werden, um ein Blockieren durch aufgeriebene Kunststoffspäne zu vermeiden.



C

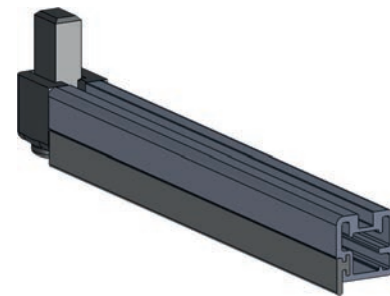
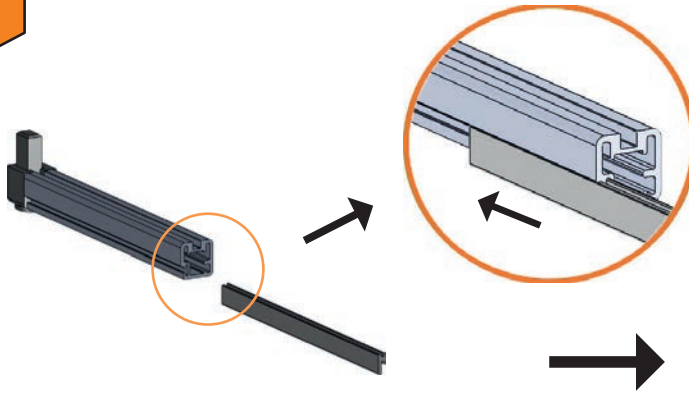


Bitte exakte
Länge beachten!
114/ 157 mm !

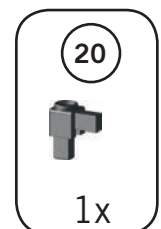
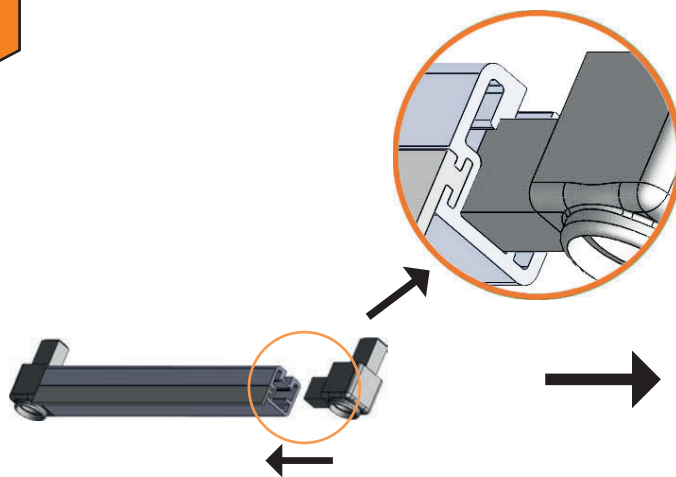


Zur leichteren Montage der
Kunststoffecken drehen Sie
bitte das Profil und klopfen
mit dem Gummihammer
das Profil auf die Ecke!

C1



C2

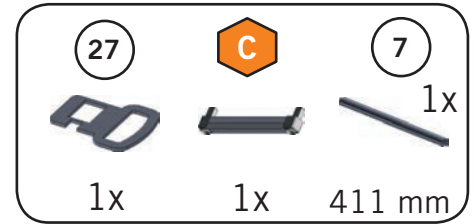
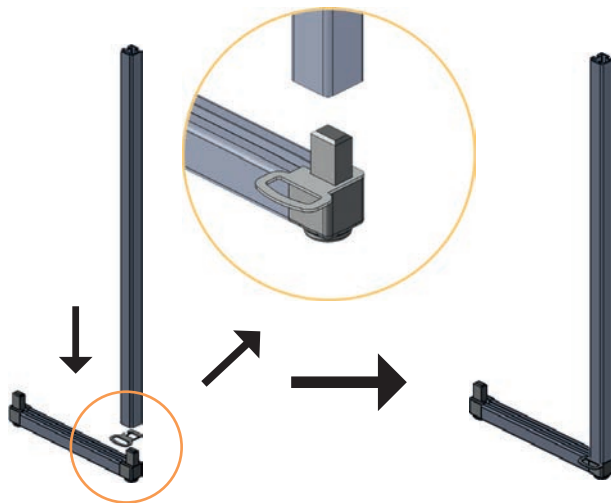


! Bitte 24x anfertigen !

D



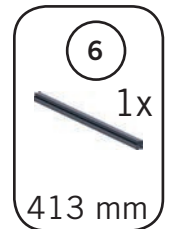
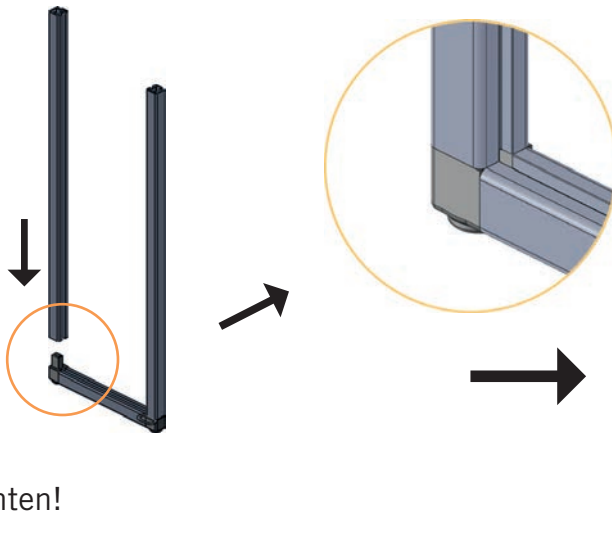
Bitte exakte
Länge beachten!
411 mm !



D1



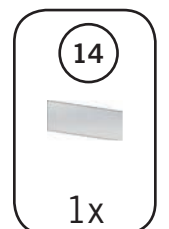
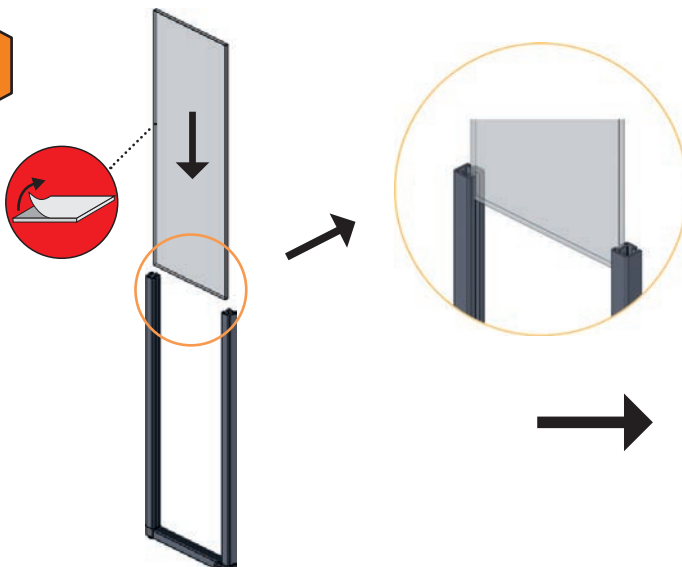
Bitte exakte
Länge beachten!
413 mm !



D2



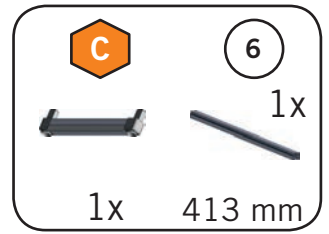
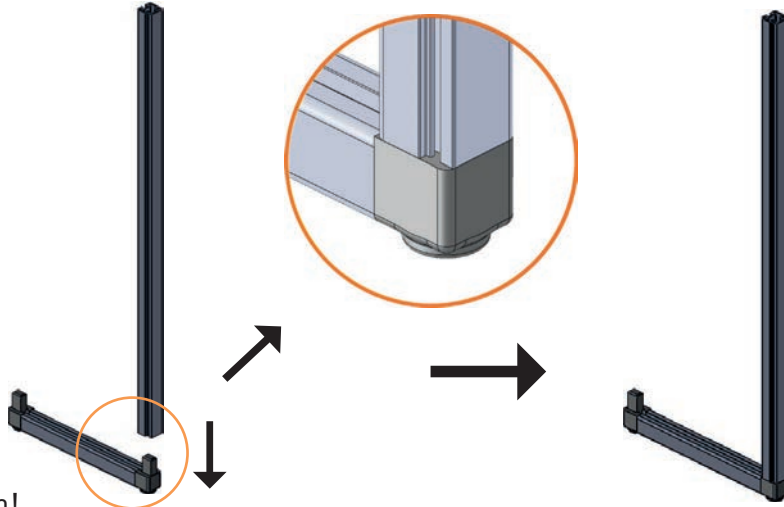
! Bitte 2x anfertigen !



E



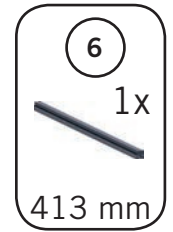
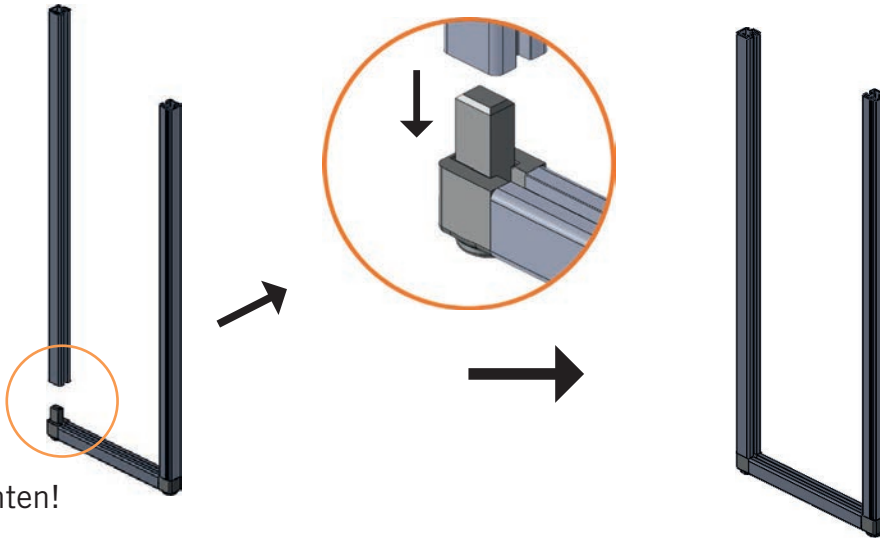
Bitte exakte
Länge beachten!
413 mm !



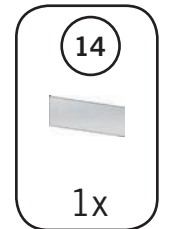
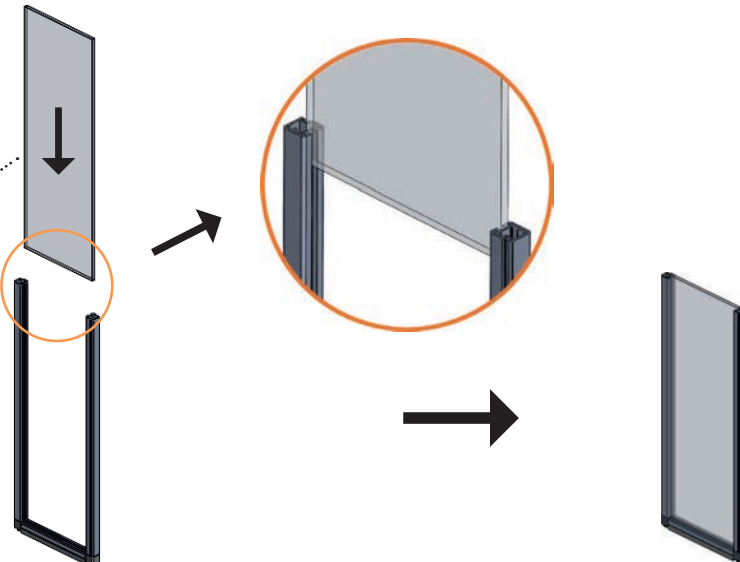
E1



Bitte exakte
Länge beachten!
413 mm !



E2

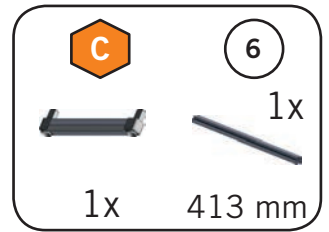
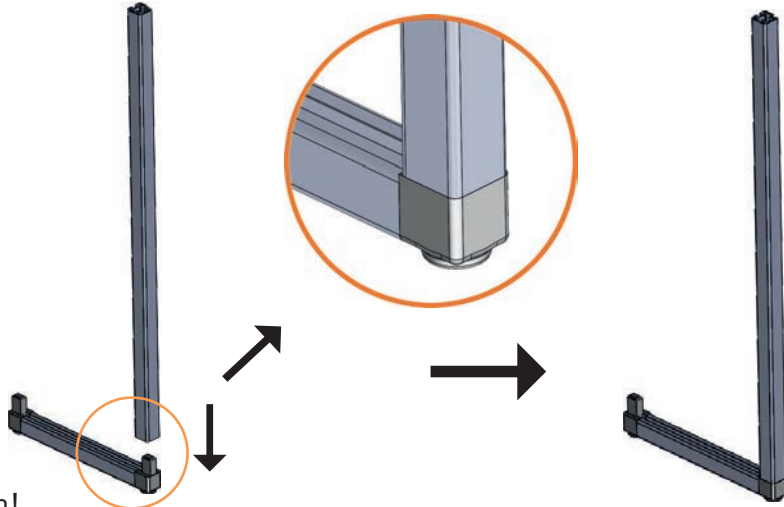


! Bitte 2x anfertigen !

F



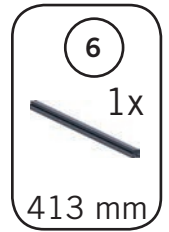
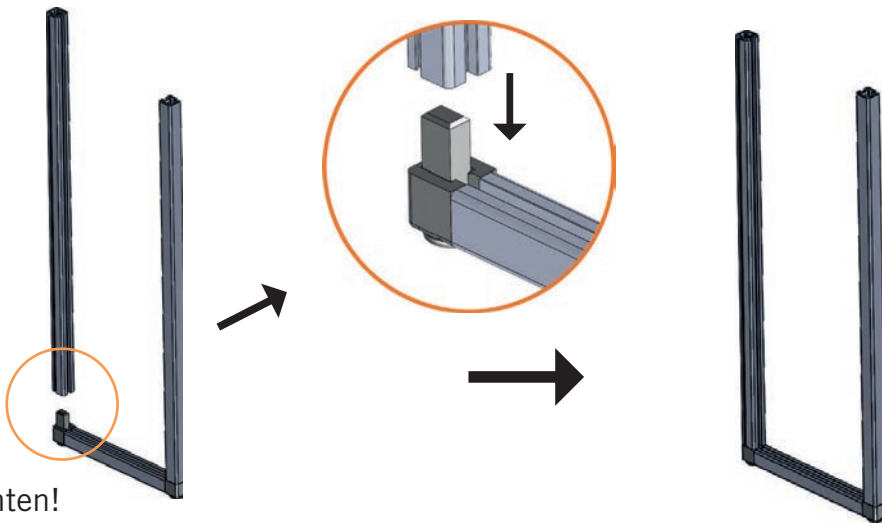
Bitte exakte
Länge beachten!
413 mm !



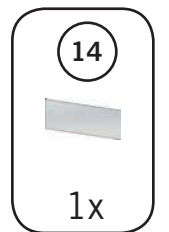
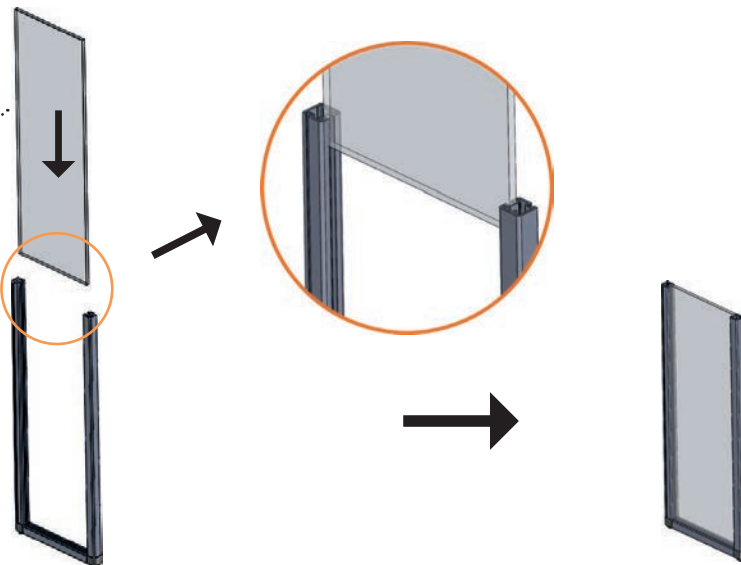
F1



Bitte exakte
Länge beachten!
413 mm !



F2

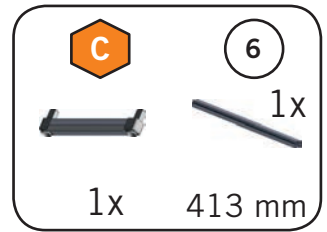
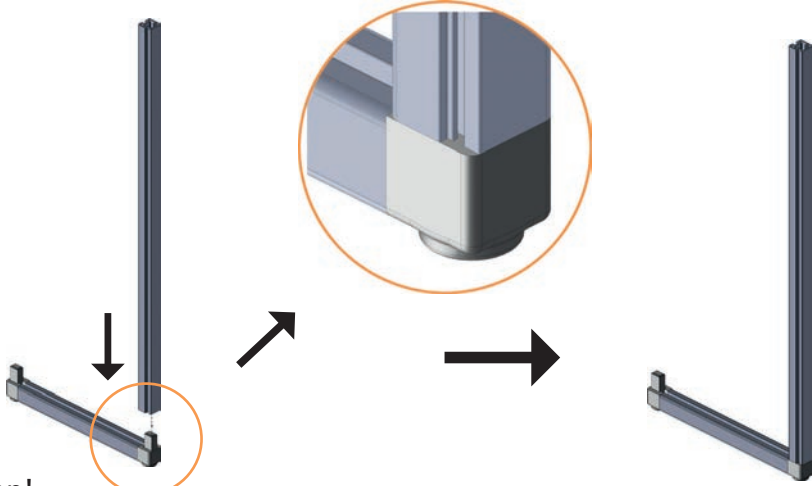


! Bitte 2x anfertigen !

G



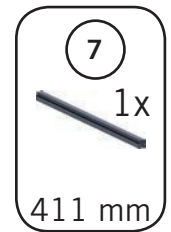
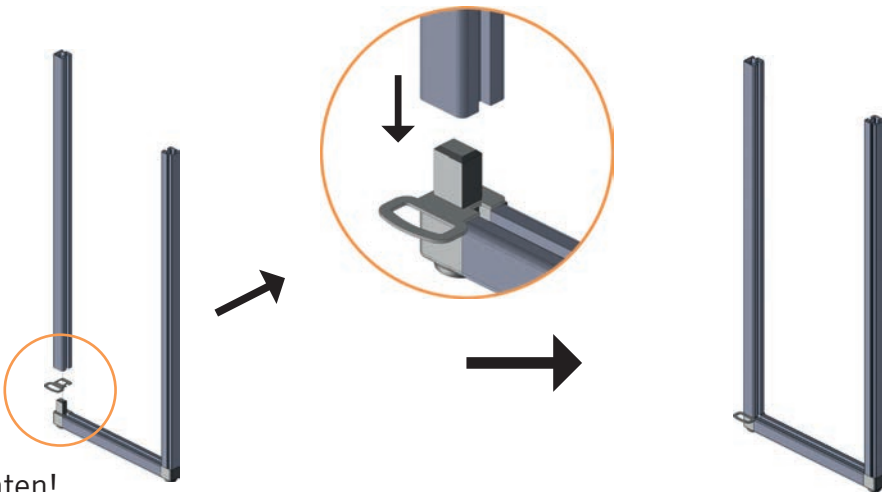
Bitte exakte
Länge beachten!
413 mm !



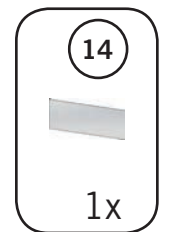
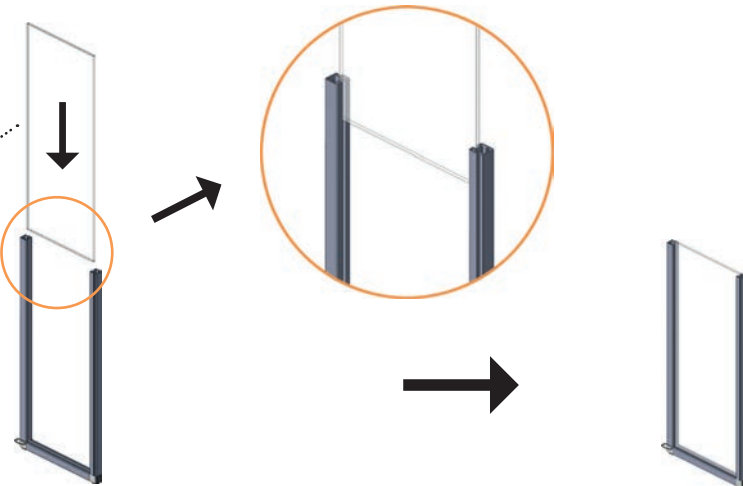
G1



Bitte exakte
Länge beachten!
411 mm !



G2

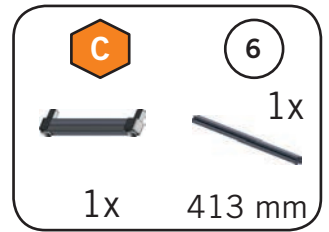
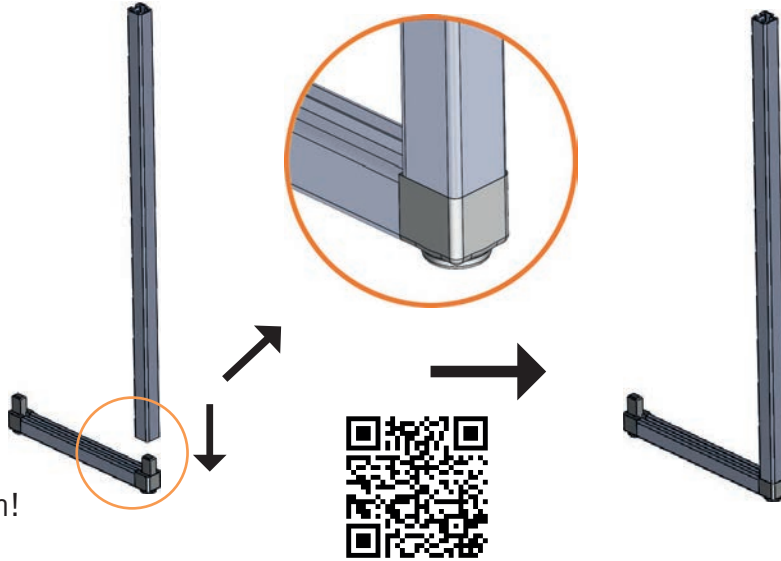


! Bitte 2x anfertigen !

H



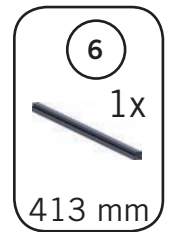
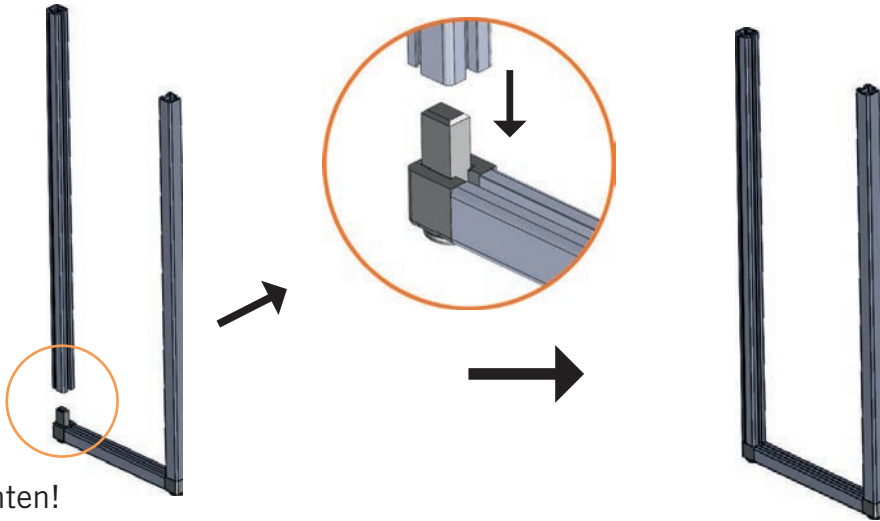
Bitte exakte
Länge beachten!
413 mm !



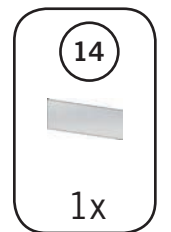
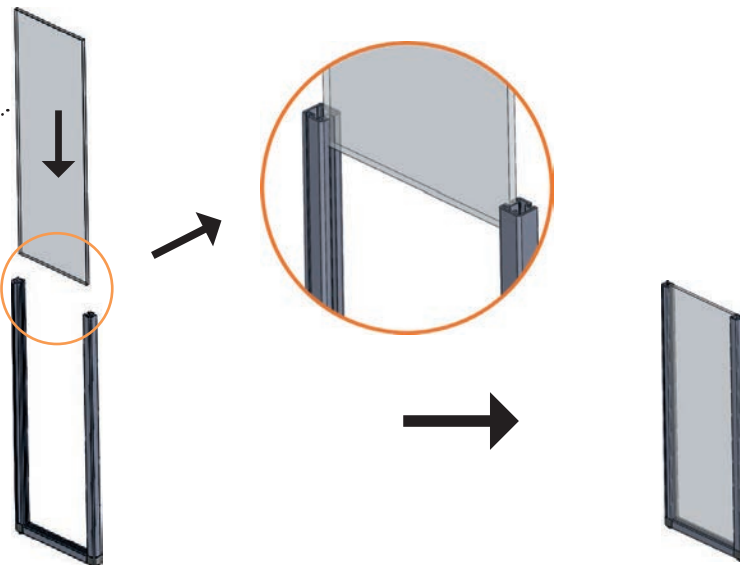
H1



Bitte exakte
Länge beachten!
413 mm !

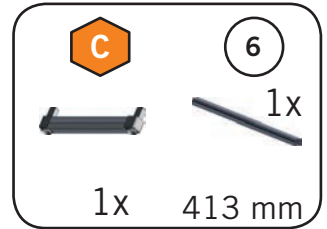
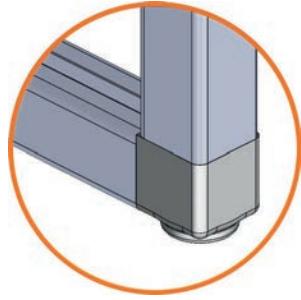
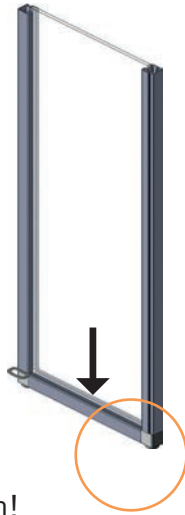


H2



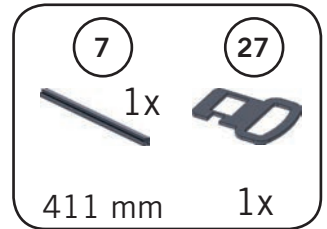
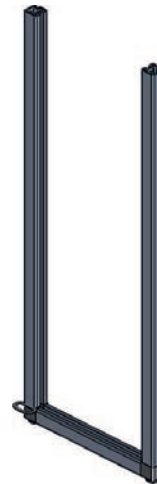
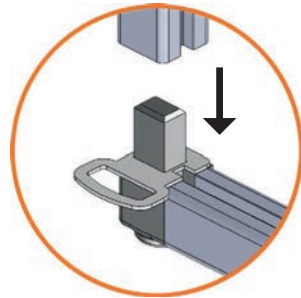
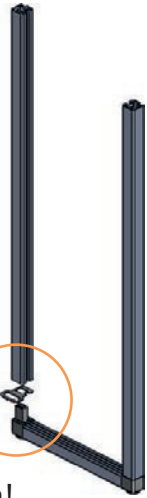
! Bitte 2x anfertigen !

I



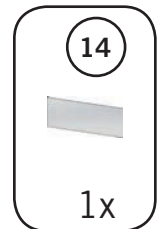
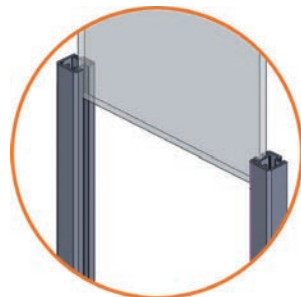
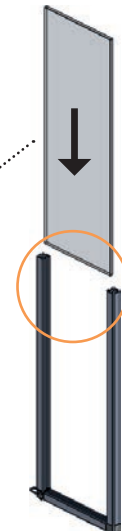
Bitte exakte
Länge beachten!
413 mm

I1



Bitte exakte
Länge beachten!
411 mm !

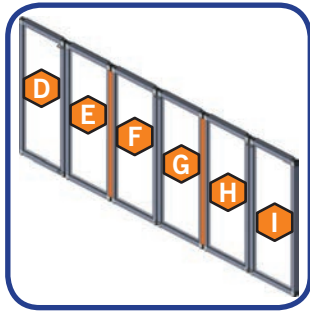
I2



! Bitte 2x anfertigen !

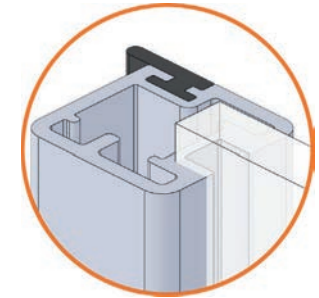
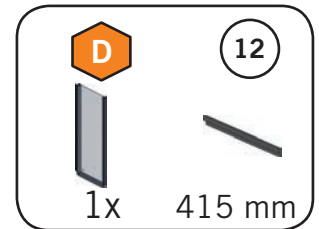
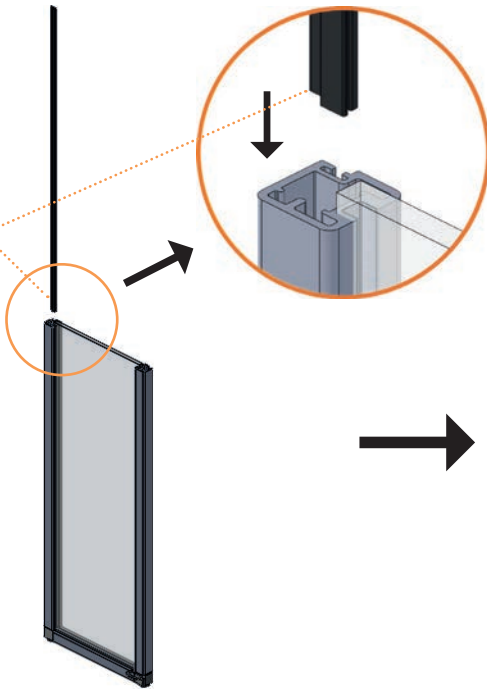
2

2 x

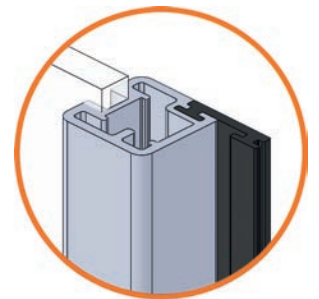
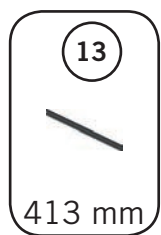
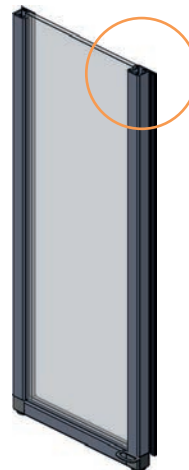
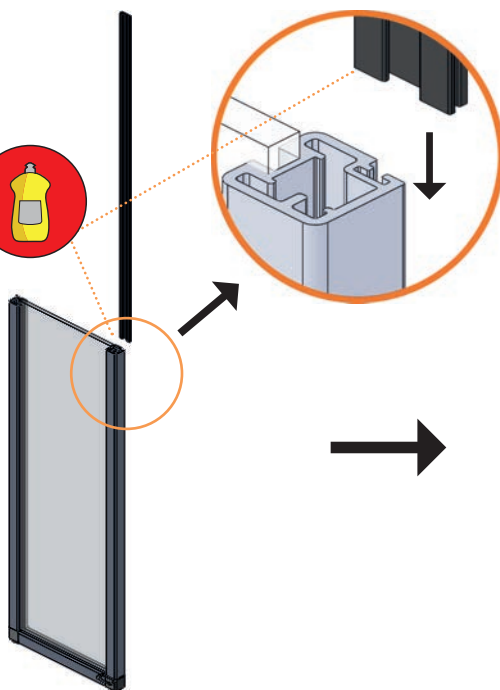


Seitentüren (2x anfertigen)

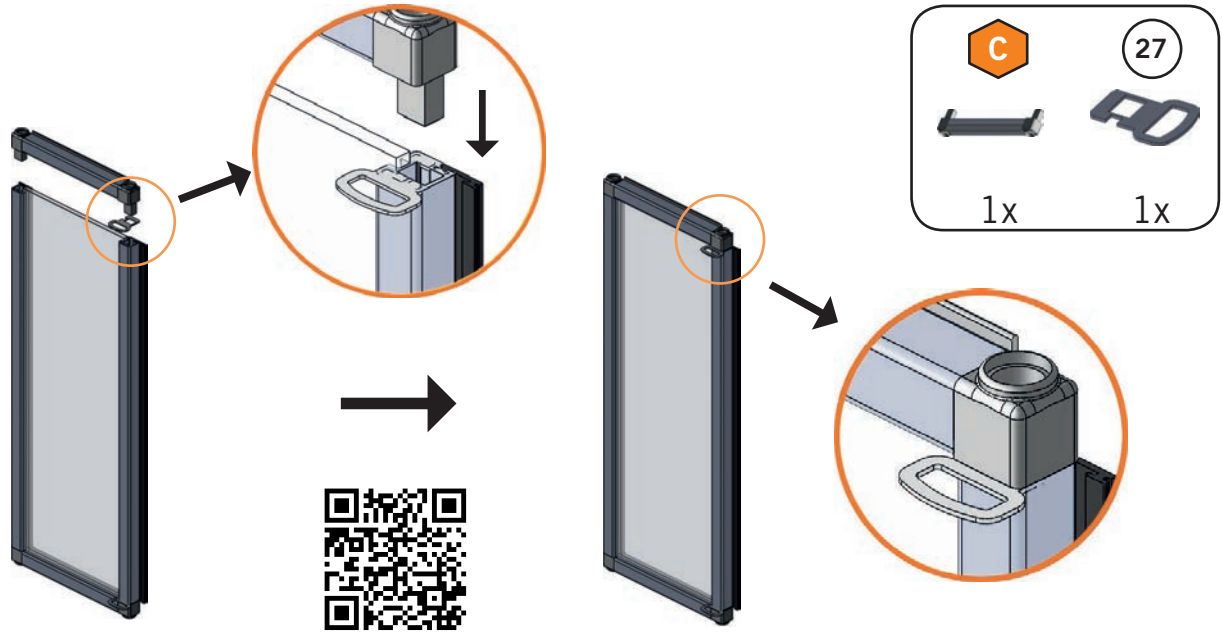
2.1



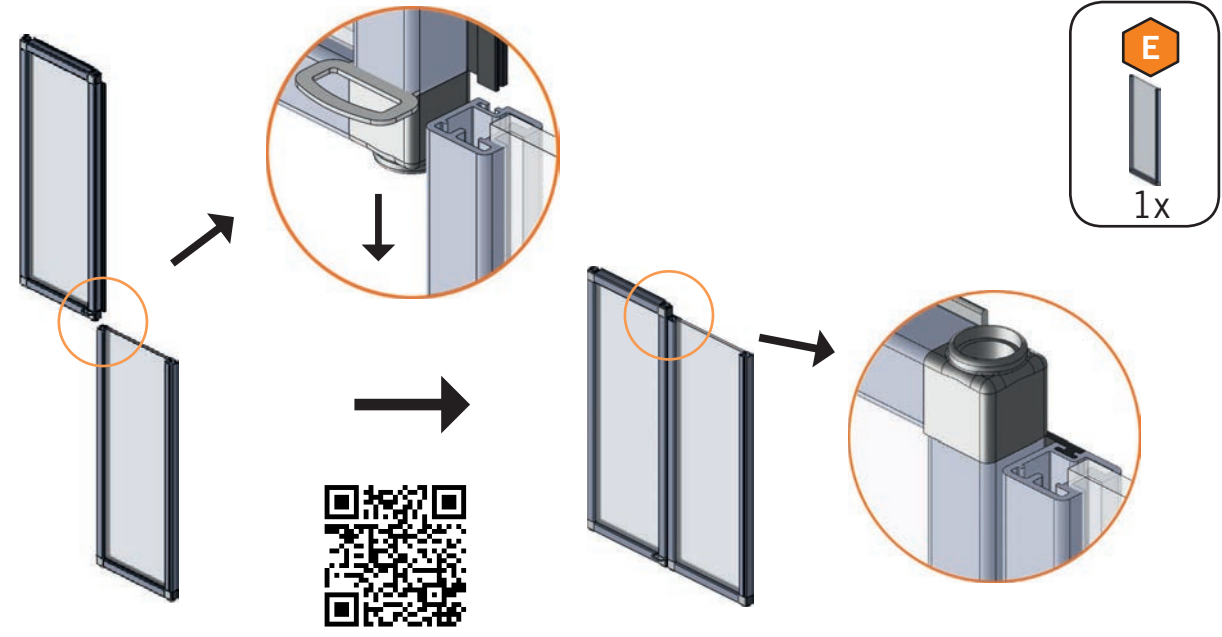
2.2



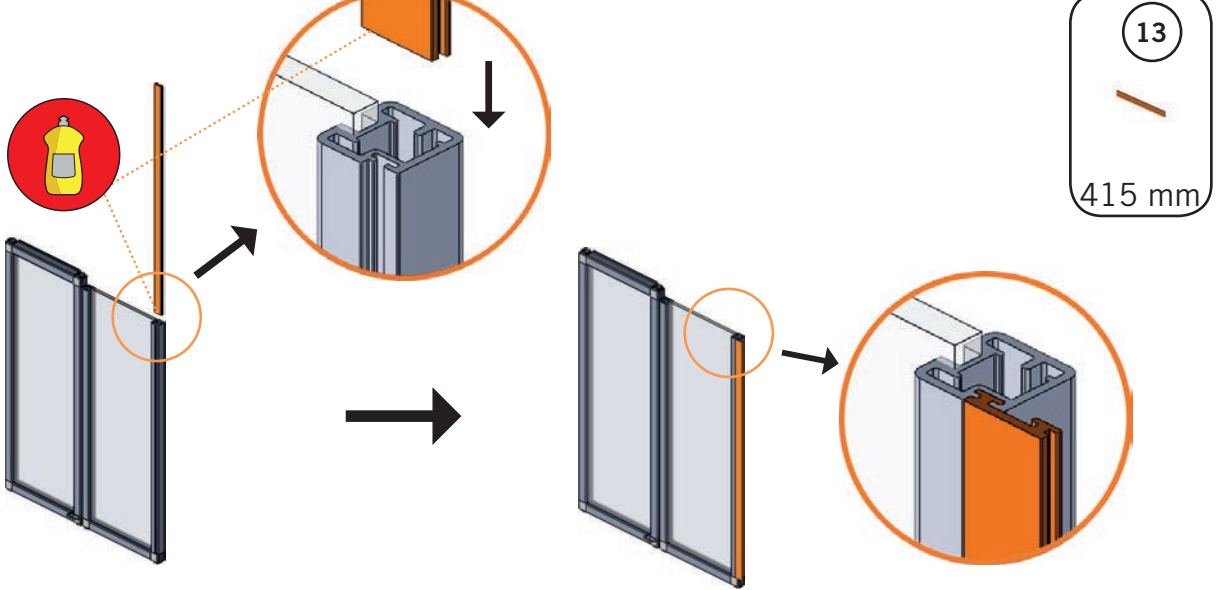
2.3



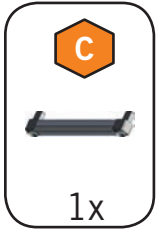
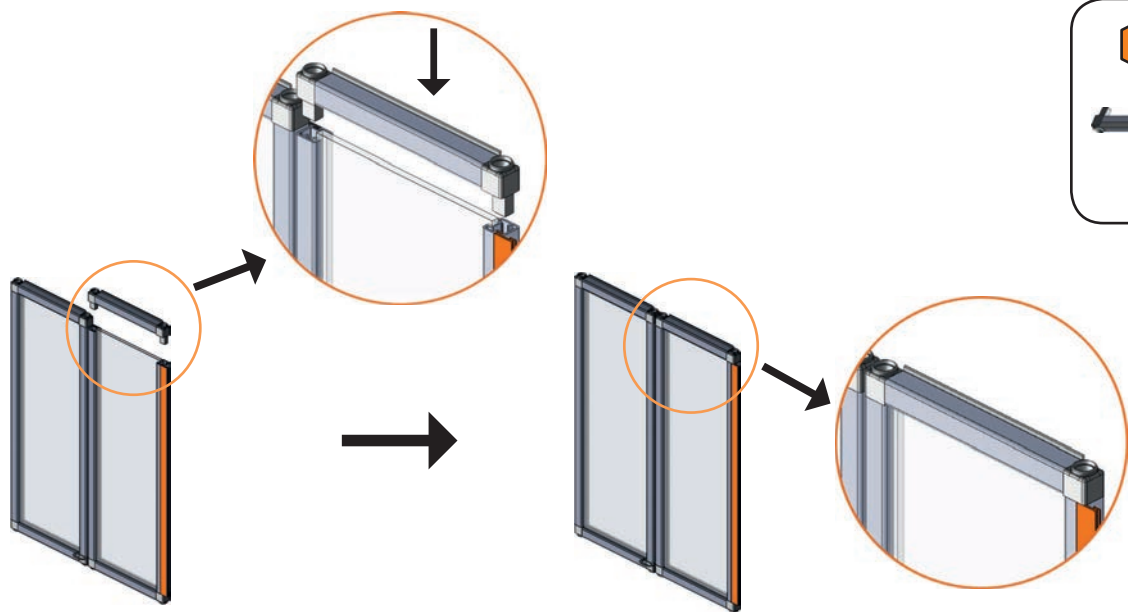
2.4



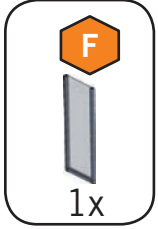
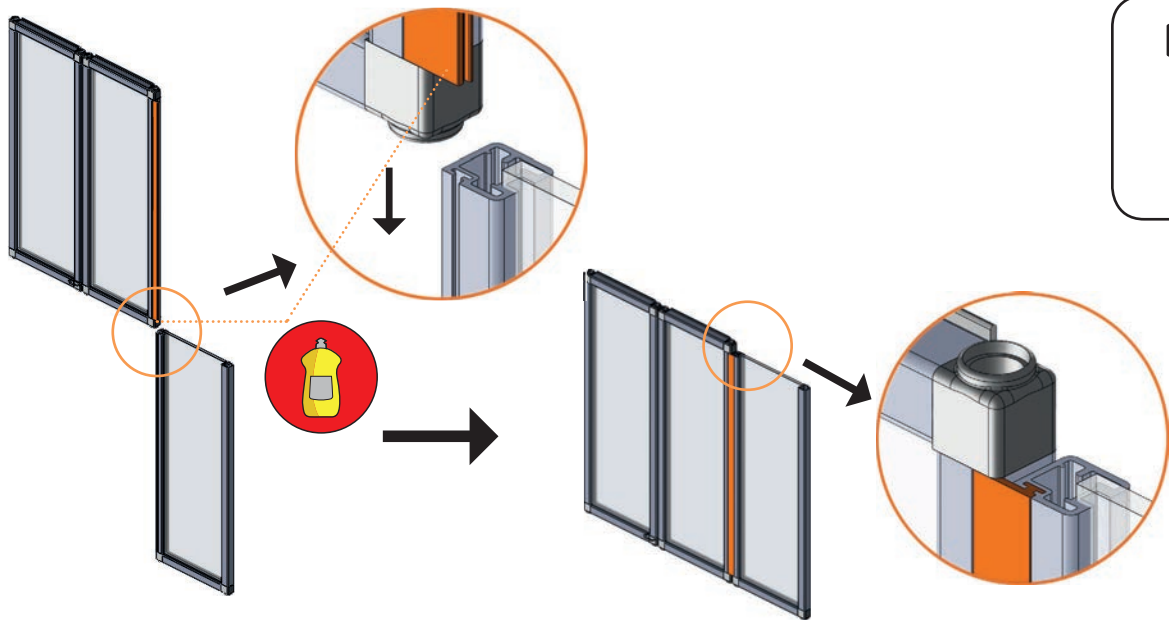
2.5



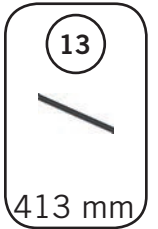
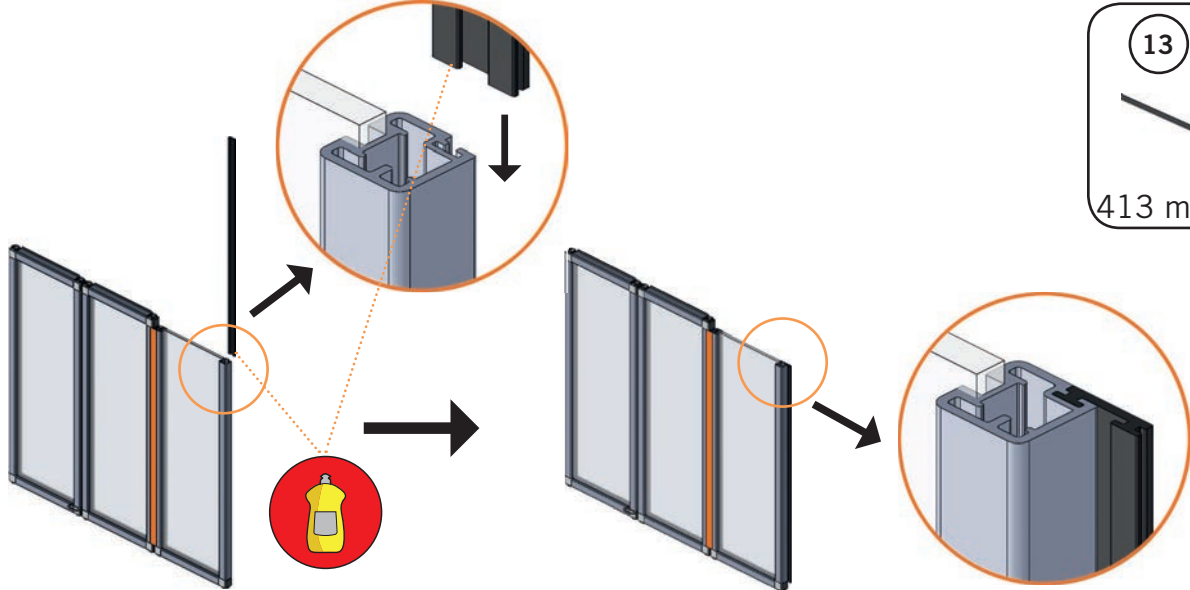
2.6



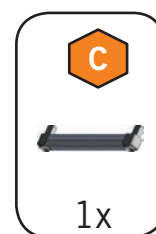
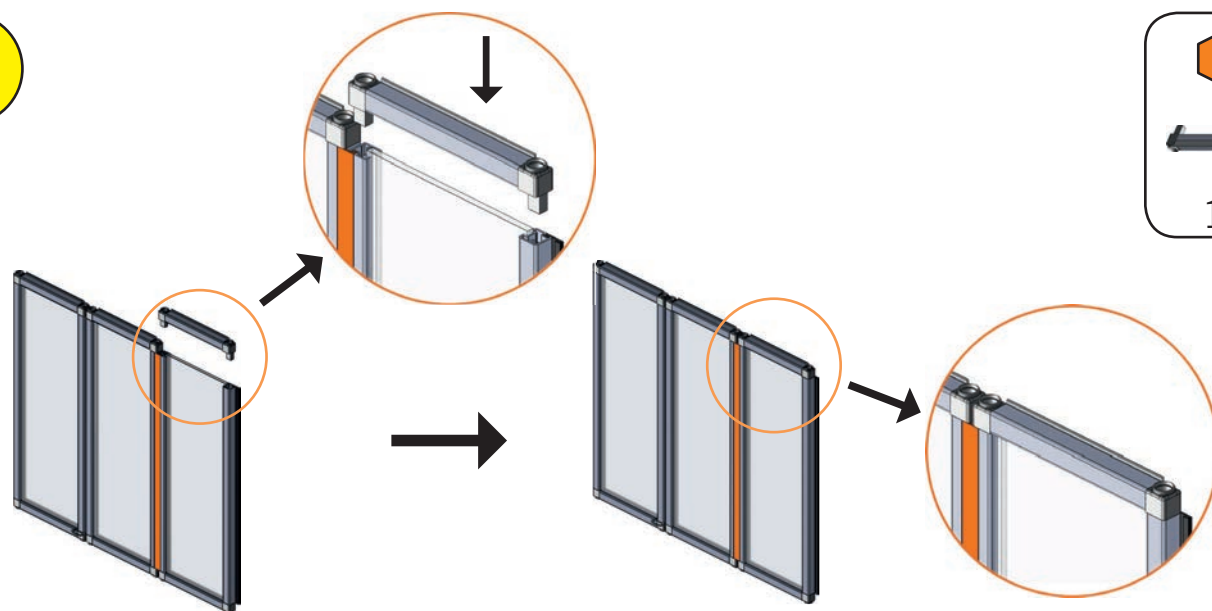
2.7



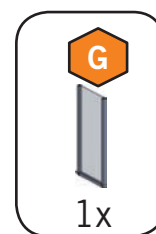
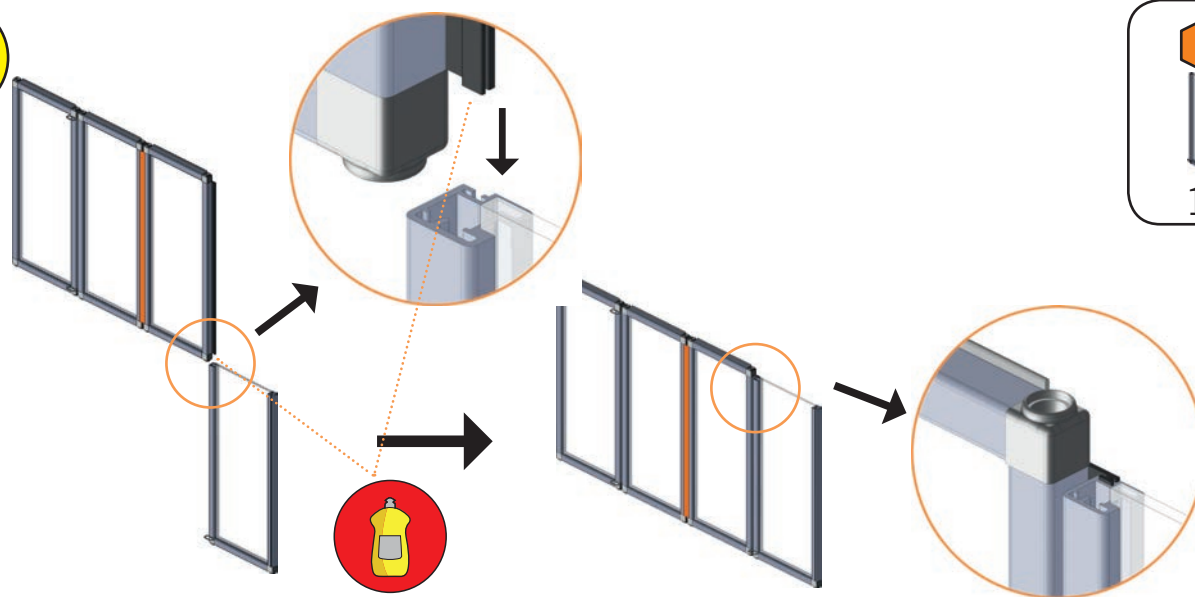
2.8



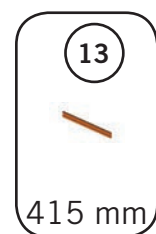
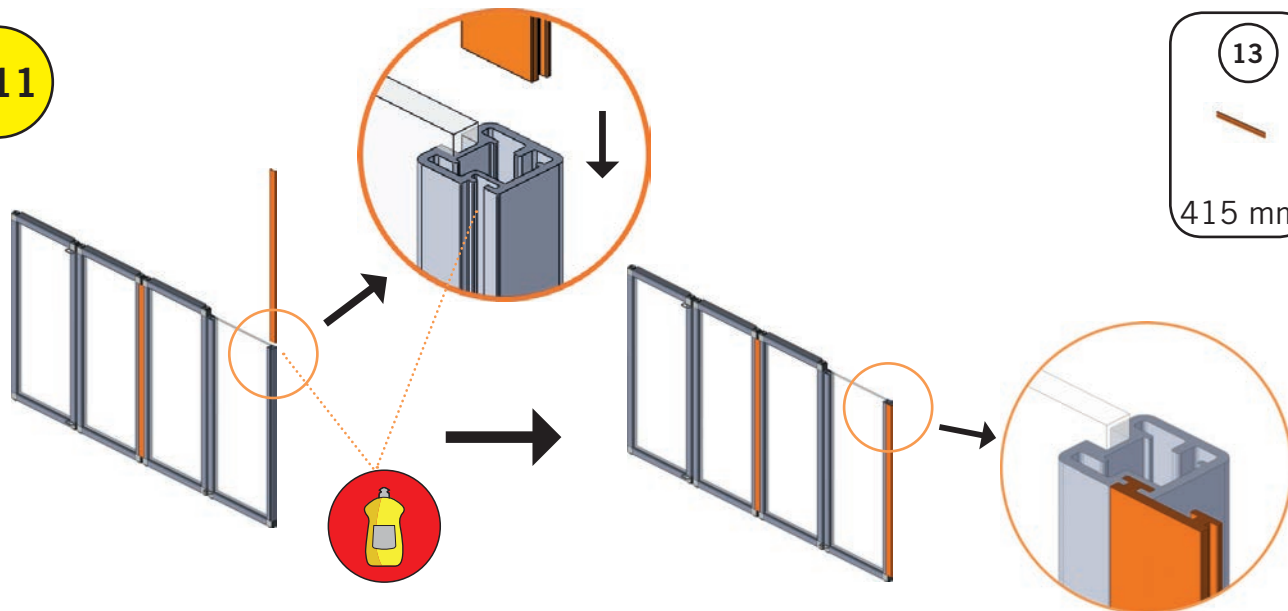
2.9



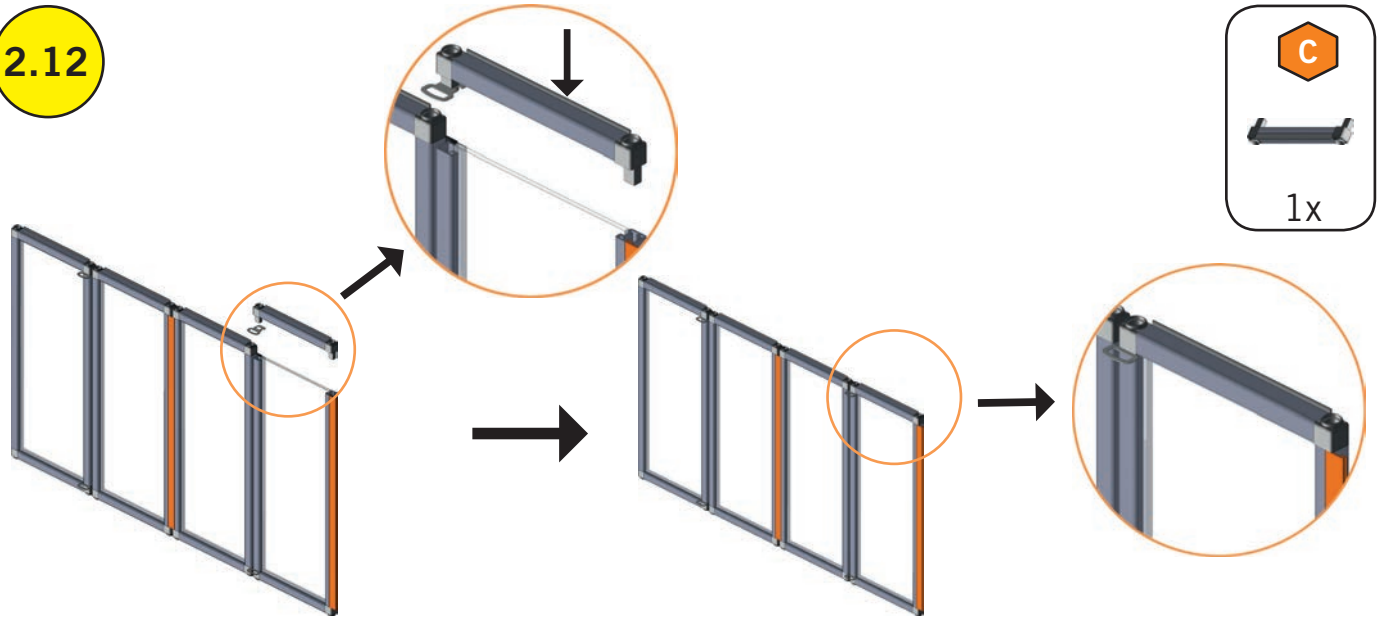
2.10



2.11

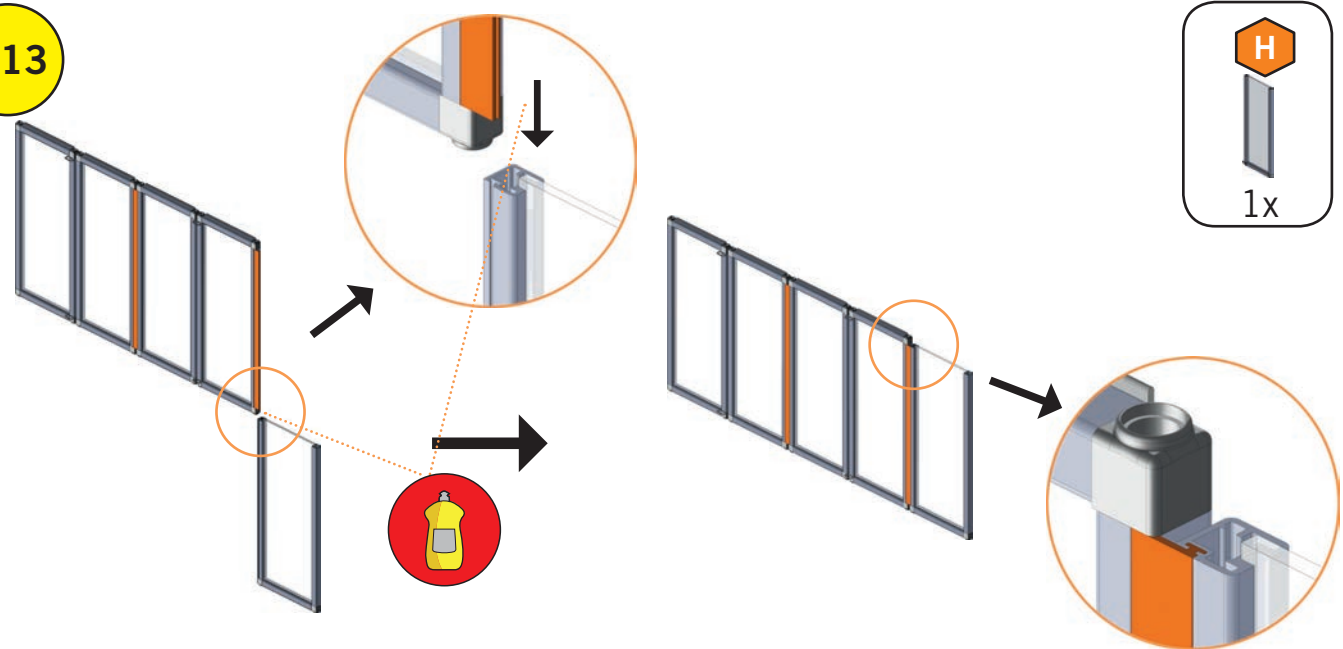


2.12



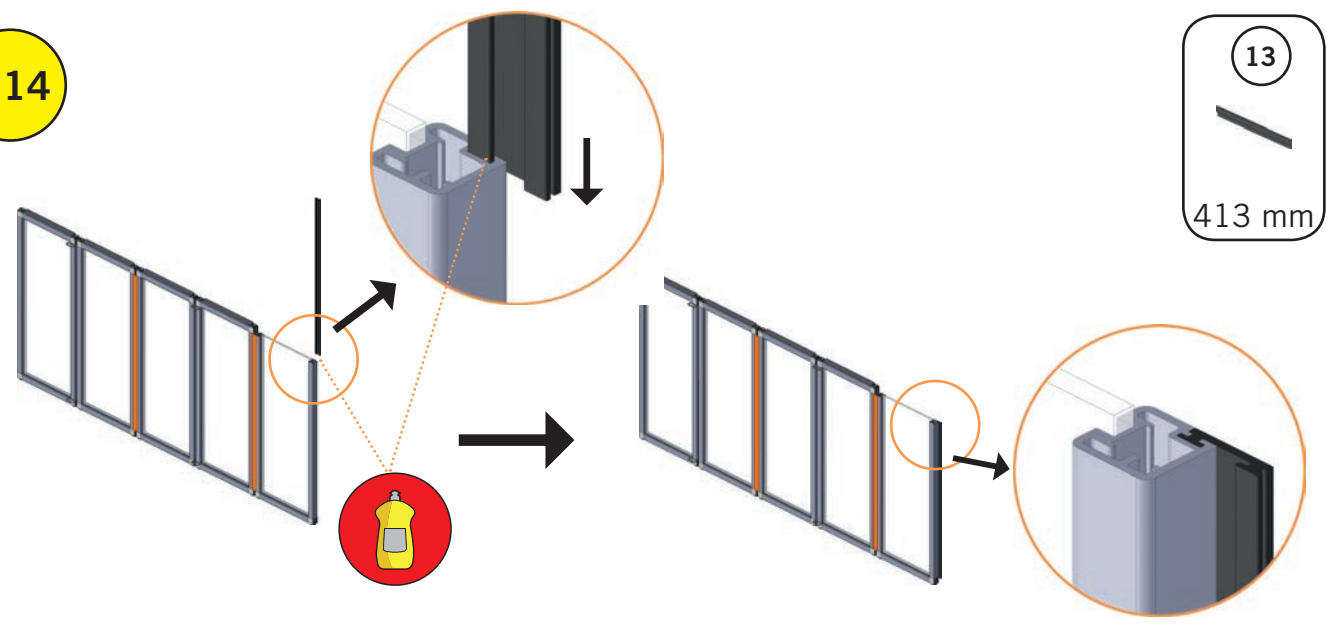
C
1x

2.13



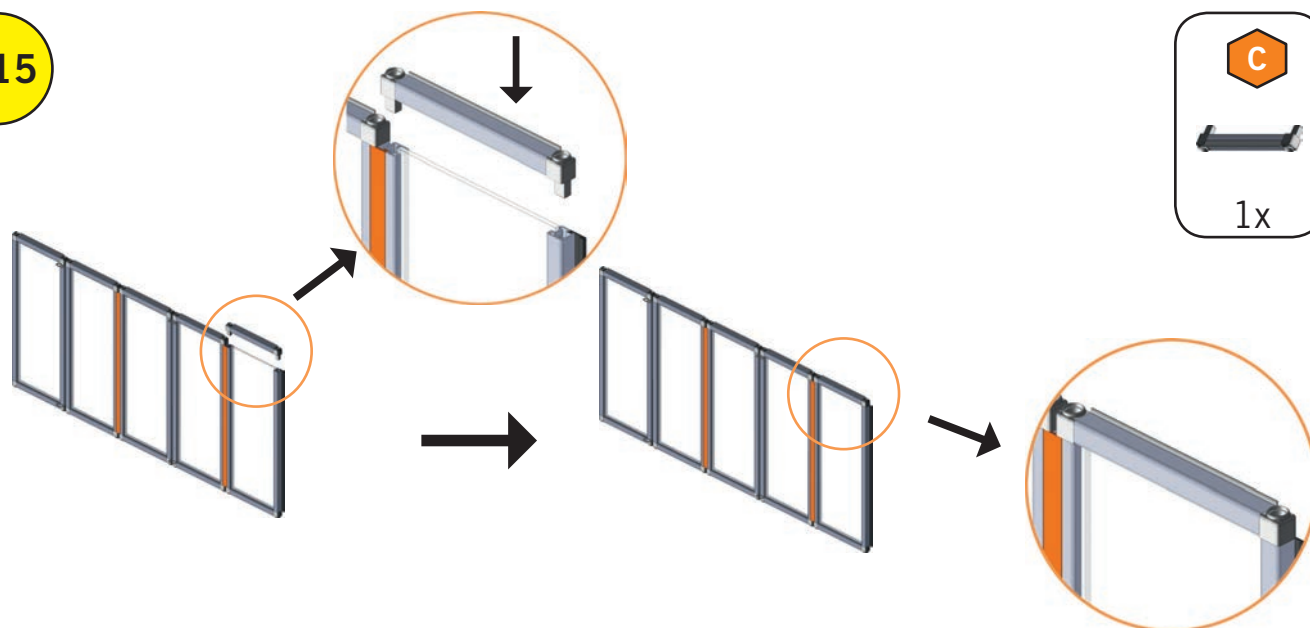
H
1x

2.14



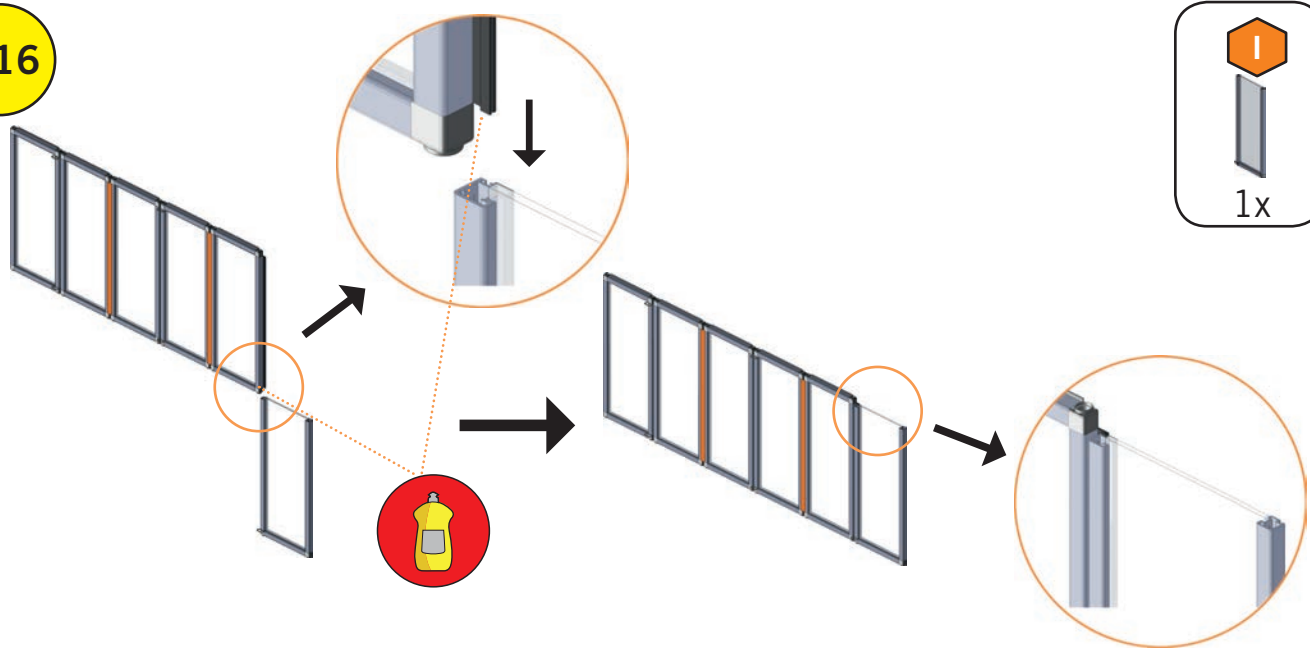
13
413 mm

2.15



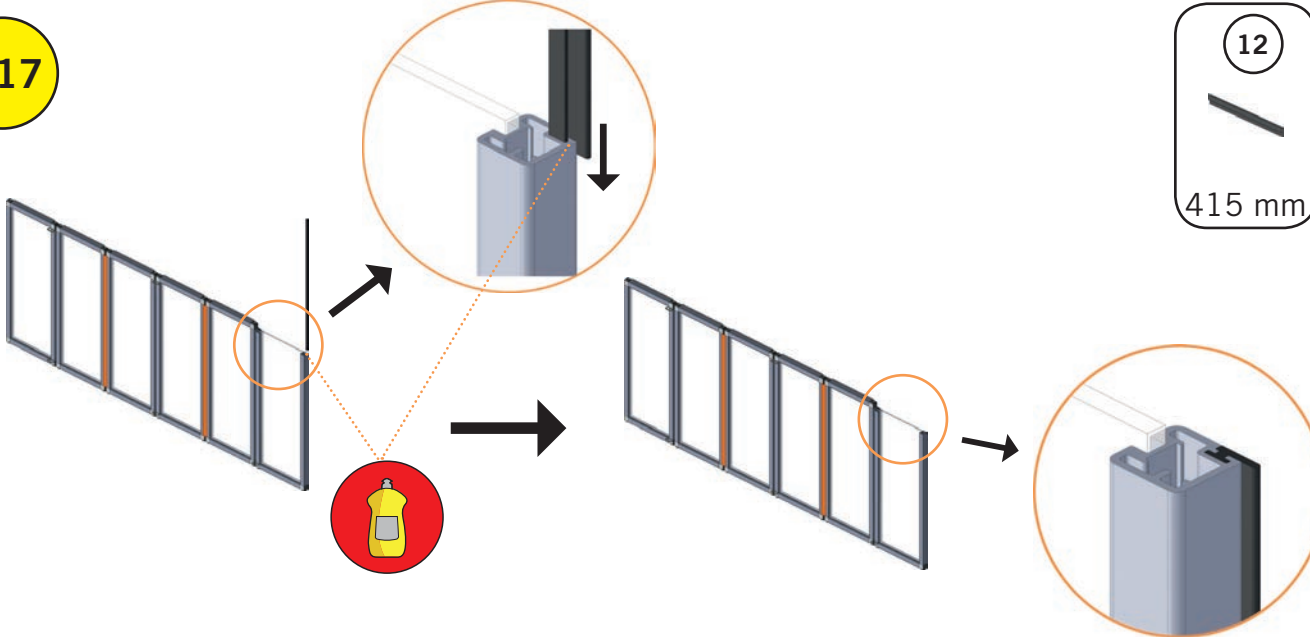
C
1x

2.16



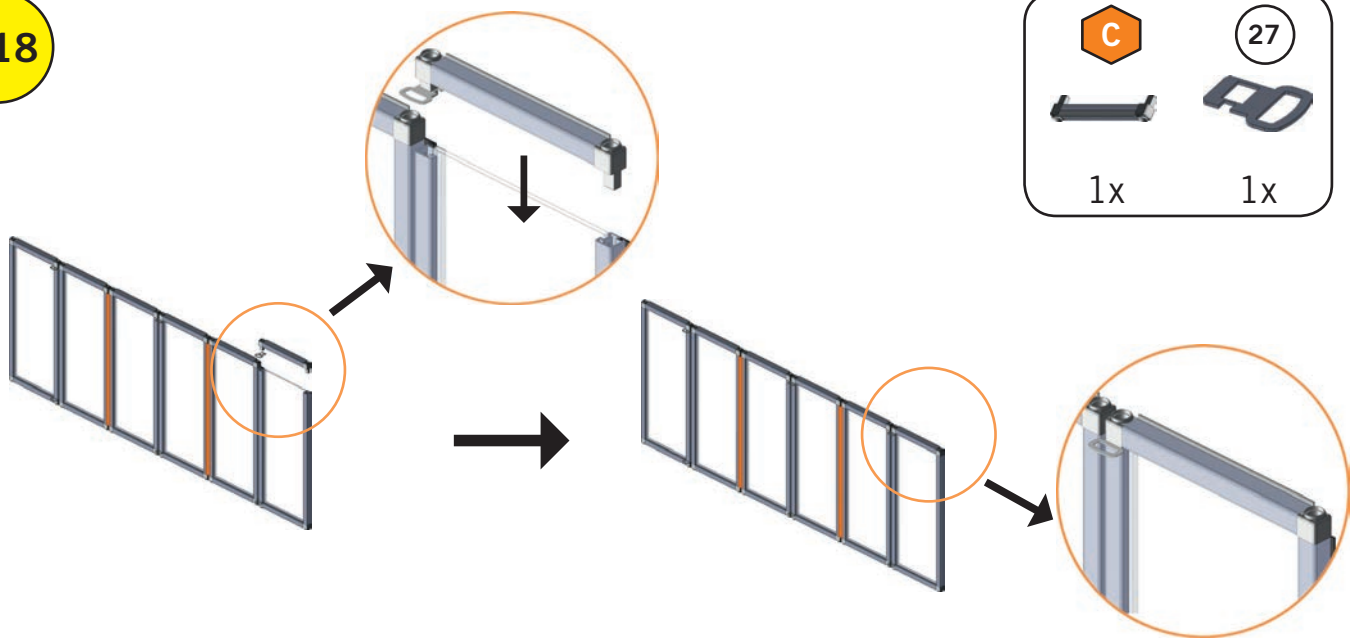
I
1x

2.17

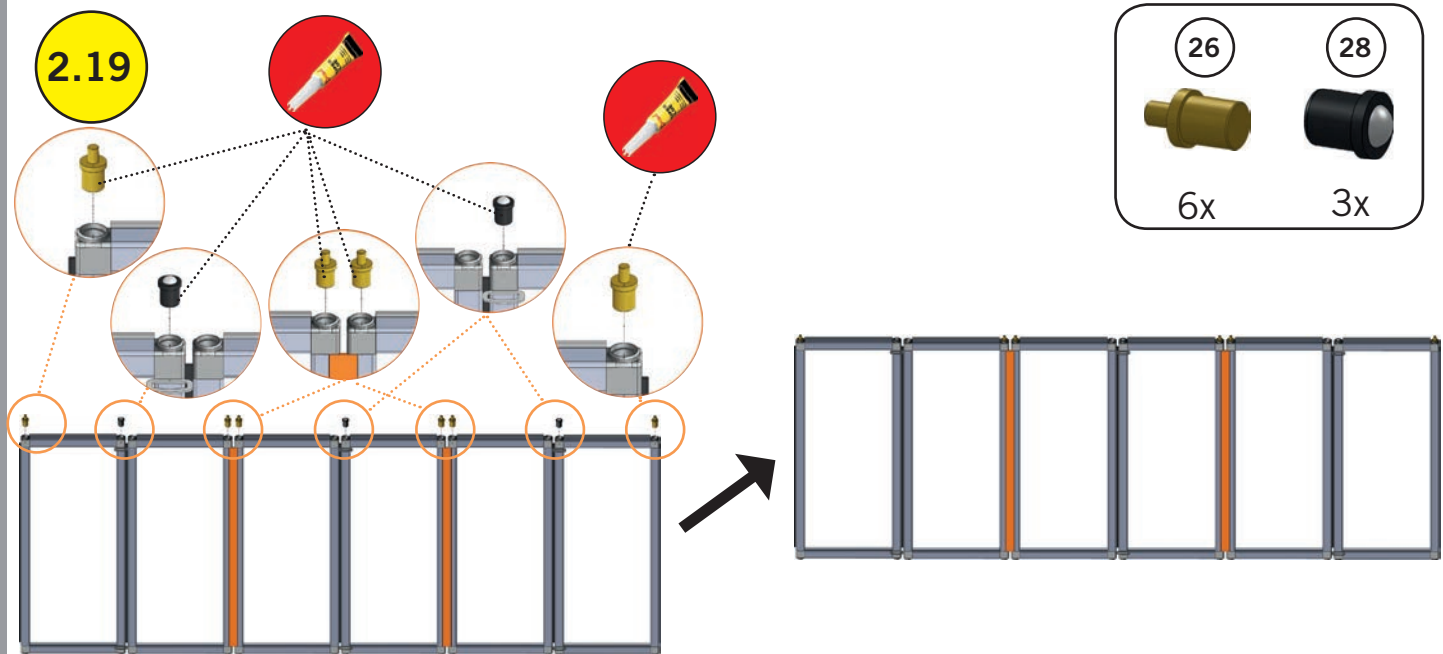


12
415 mm

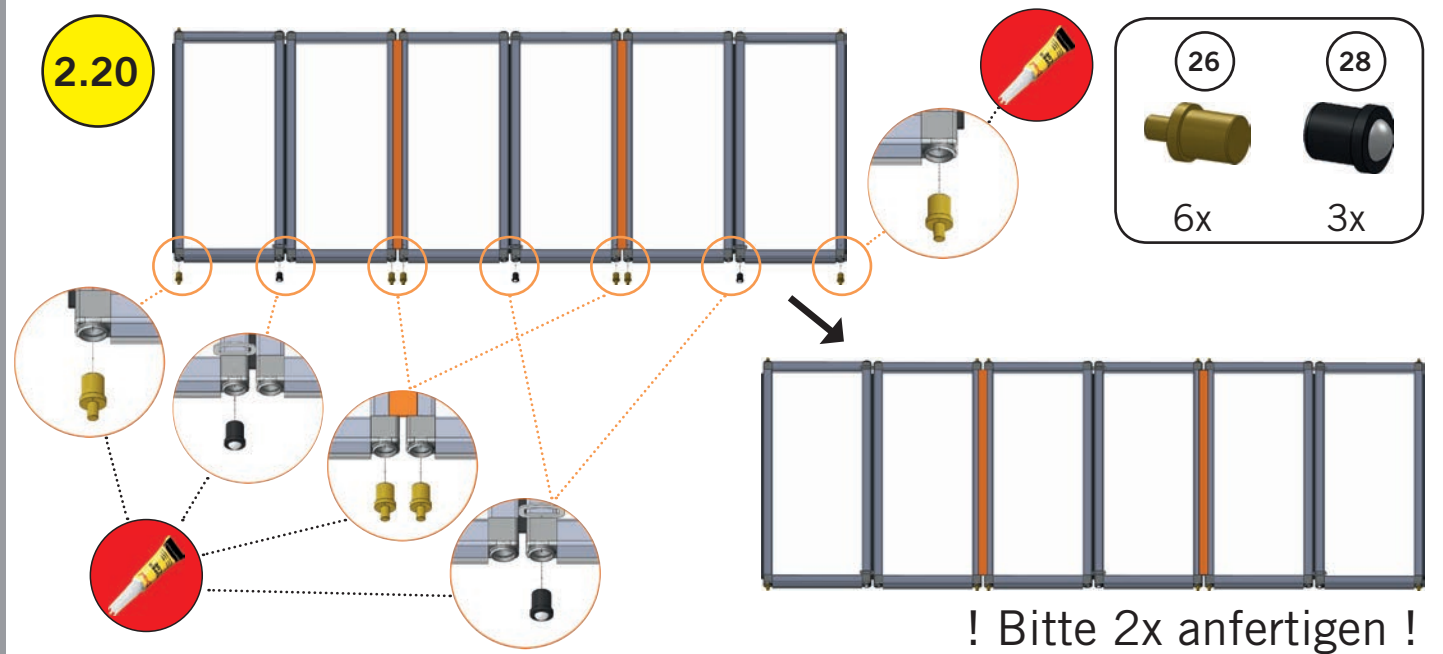
2.18



2.19



2.20



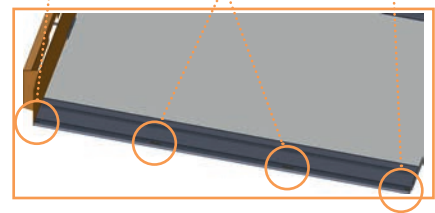
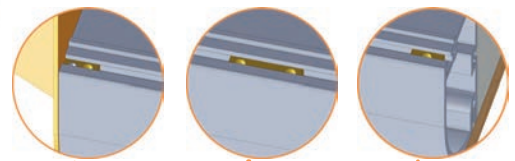
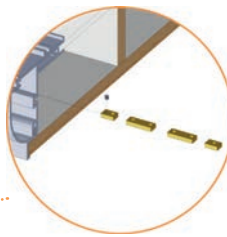
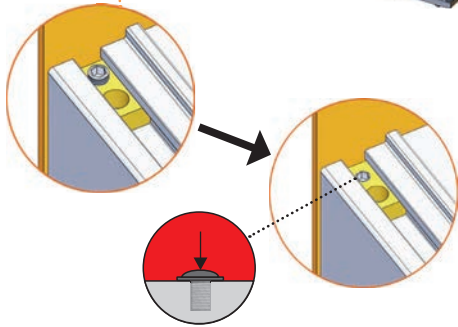
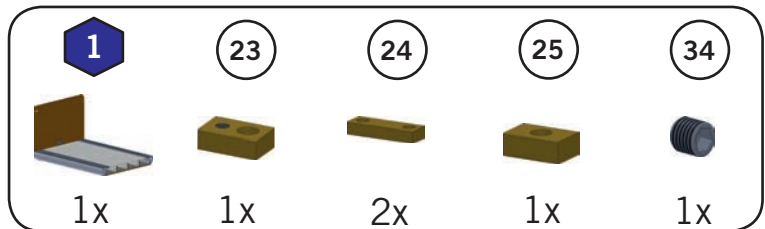
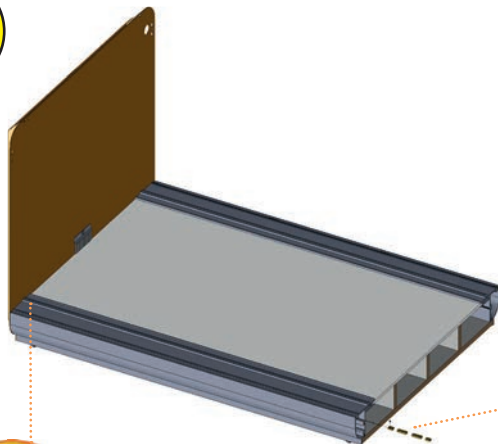
! Bitte 2x anfertigen !

3

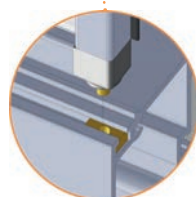
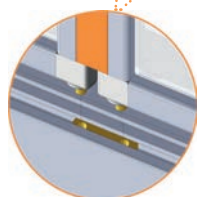
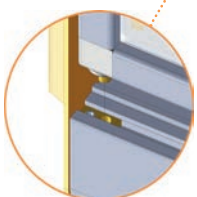
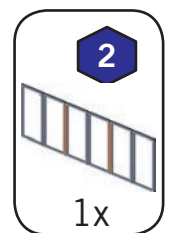
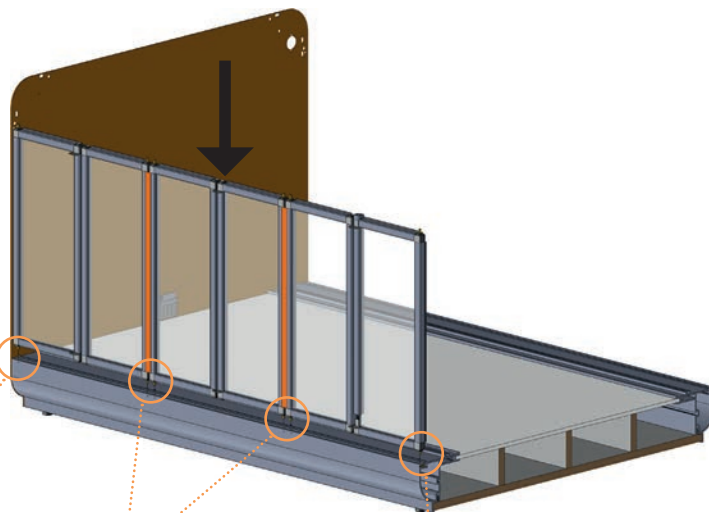


Oberer Rahmen

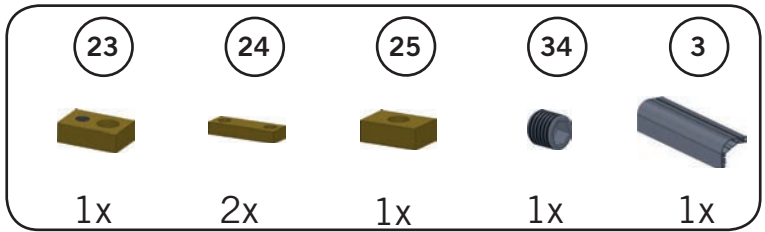
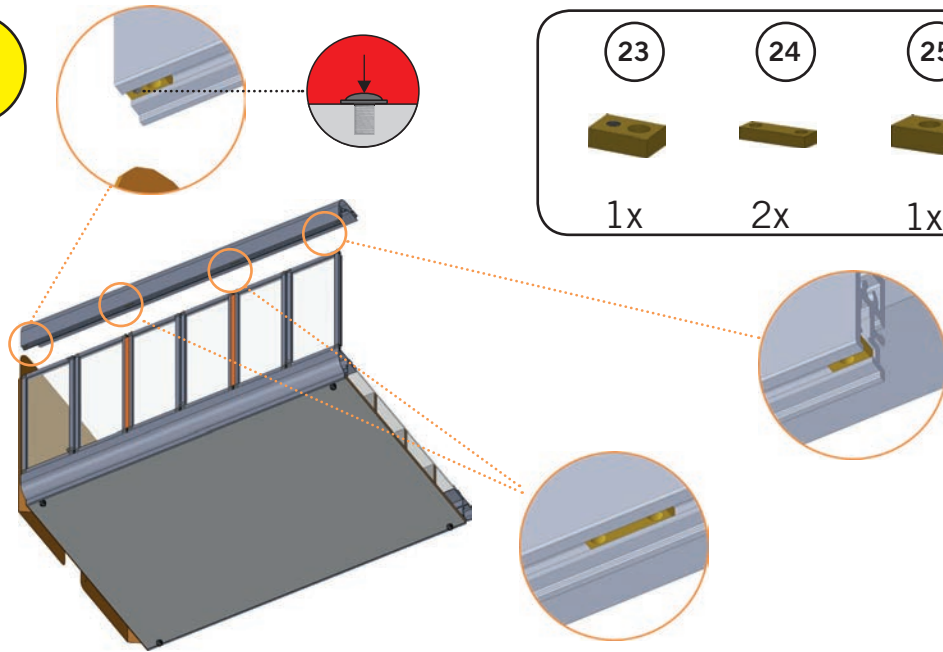
3.1



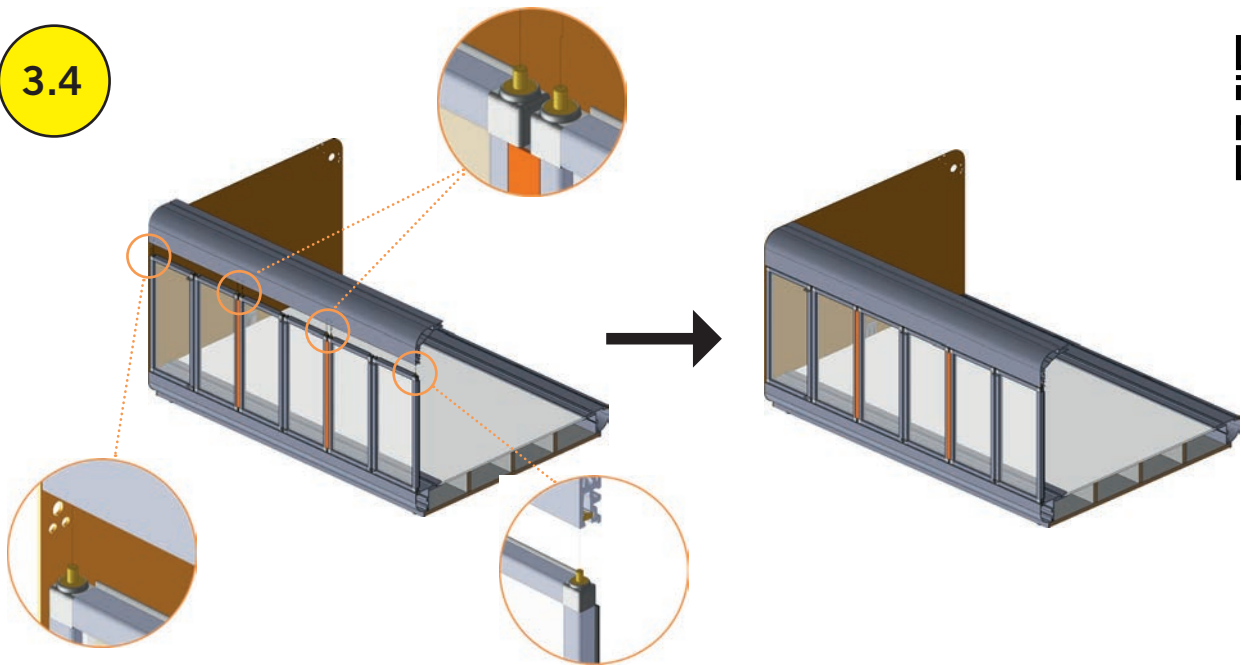
3.2



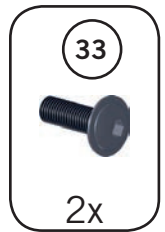
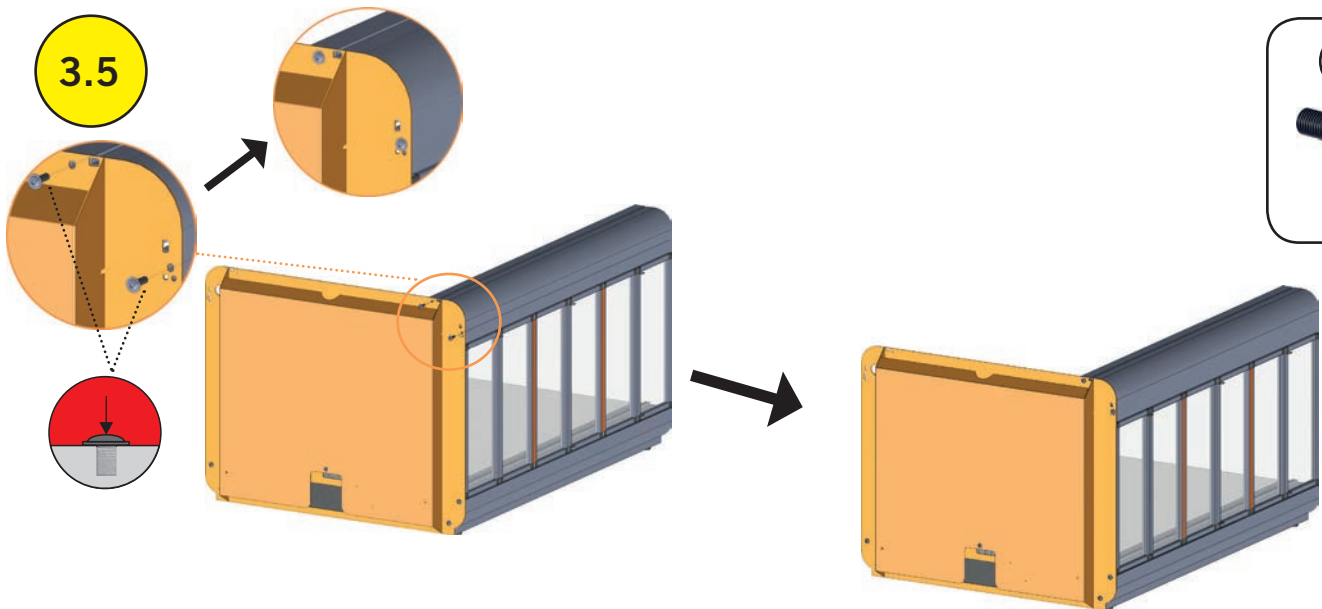
3.3



3.4

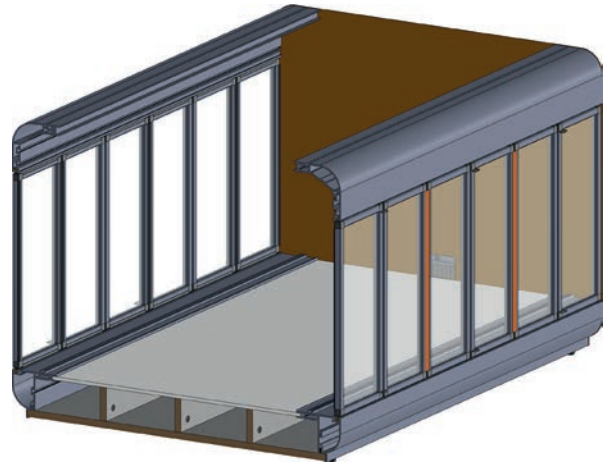


3.5

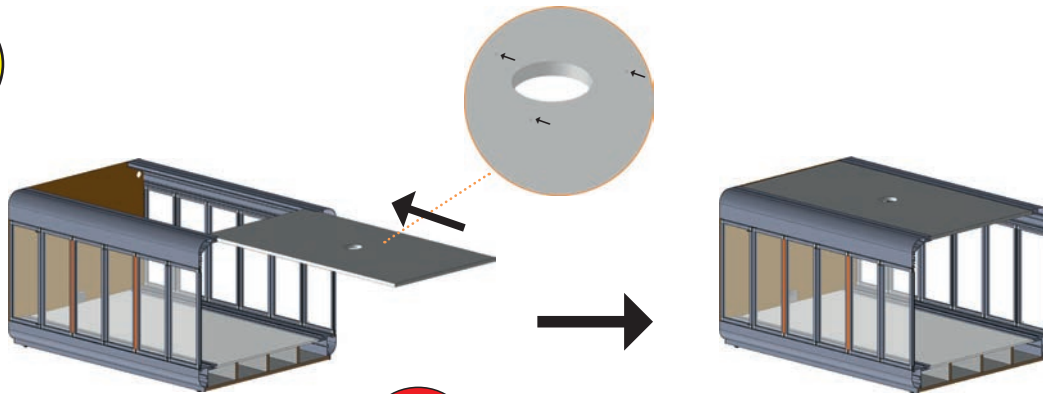


3.6

Bitte führen Sie die Bauschritte 3.1 bis 3.5 spiegelbildlich für die rechte Umhausungsseite durch!



3.7



19

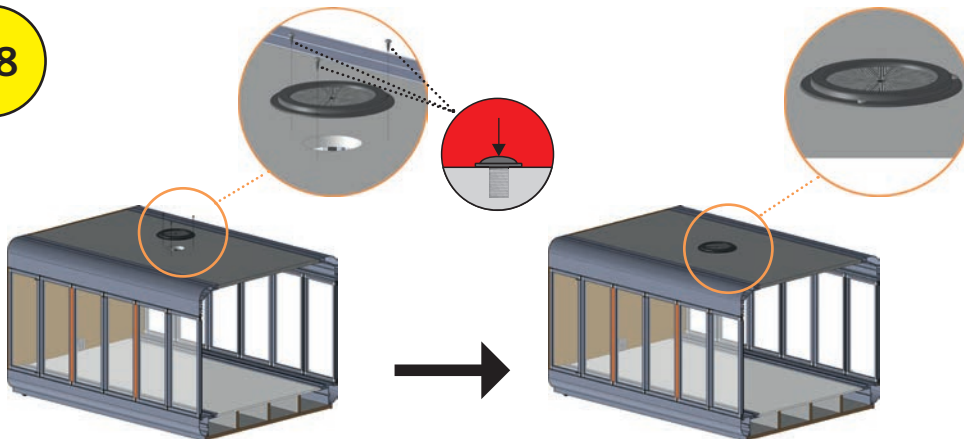


1x



Bitte Ausrichtung der Deckenplatte beachten!

3.8



21



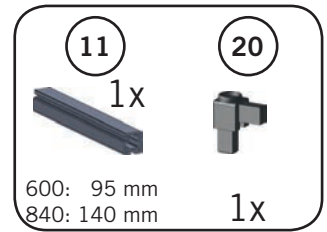
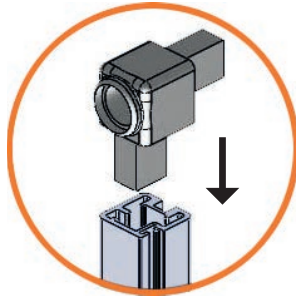
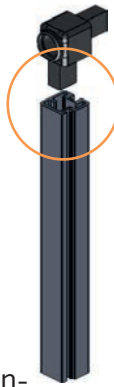
1x

50



3x

J

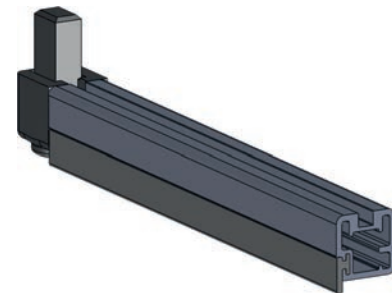
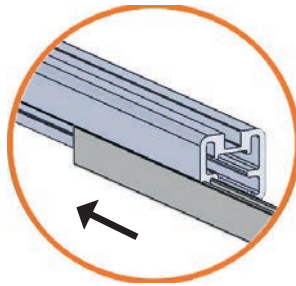
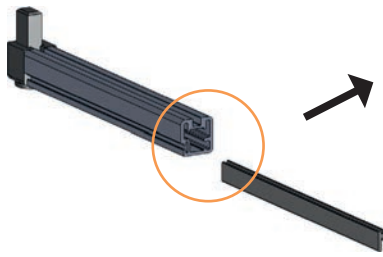


Bitte exakte Länge beachten!
95/ 140 mm !

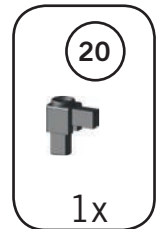
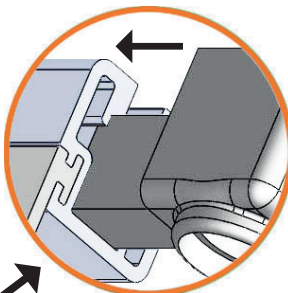


Zur leichteren Montage der Kunststoffecken drehen Sie bitte das Profil und klopfen mit dem Gummihammer das Profil auf die Ecke!

J1

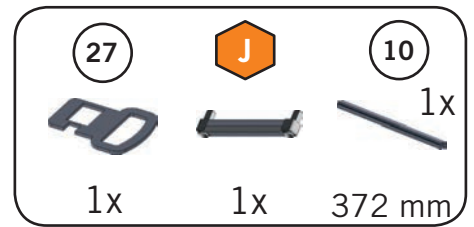


J2

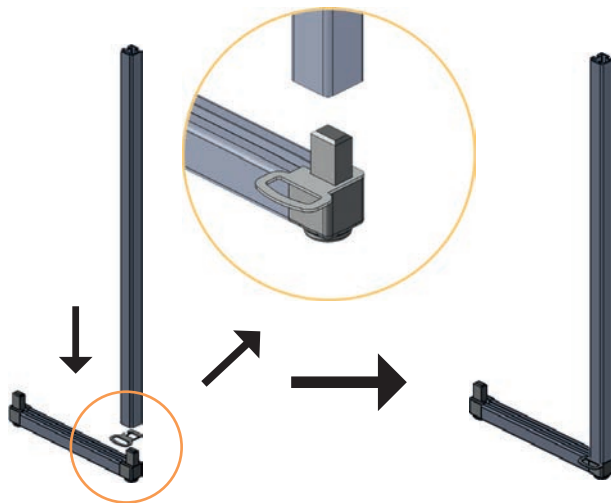


! Bitte 8x anfertigen !

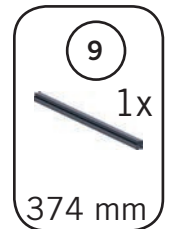
K



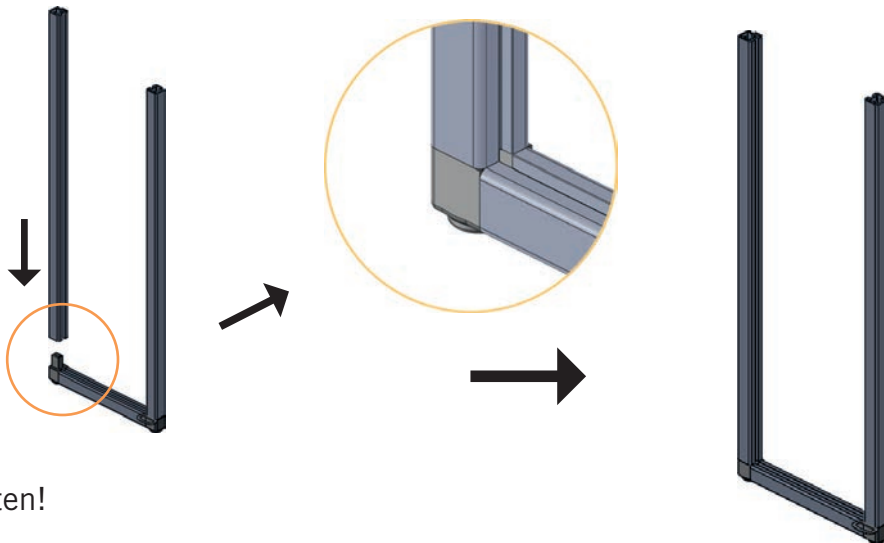
Bitte exakte Länge beachten!
372 mm !



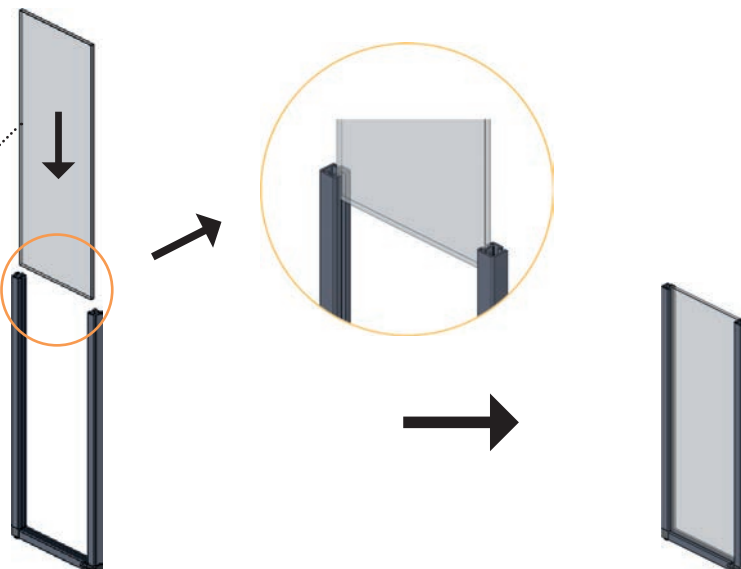
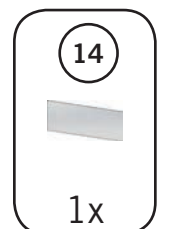
K1



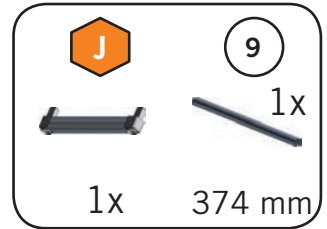
Bitte exakte Länge beachten!
374 mm !



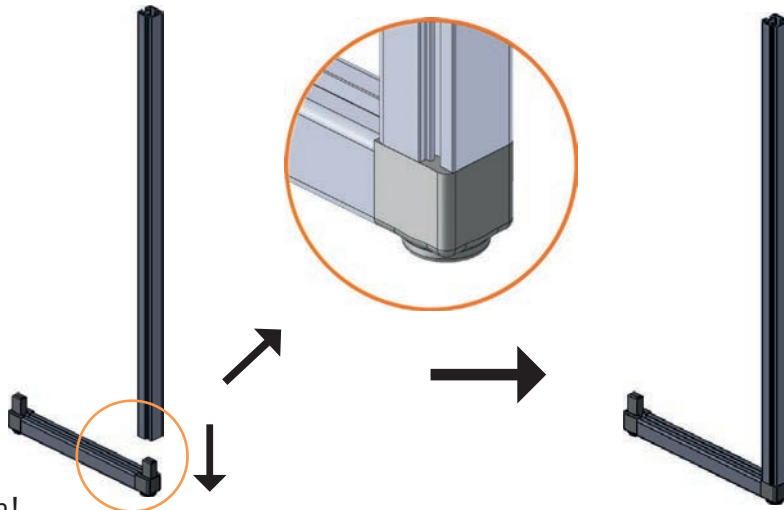
K2



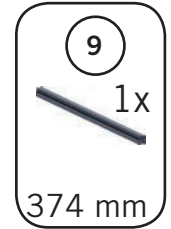
L



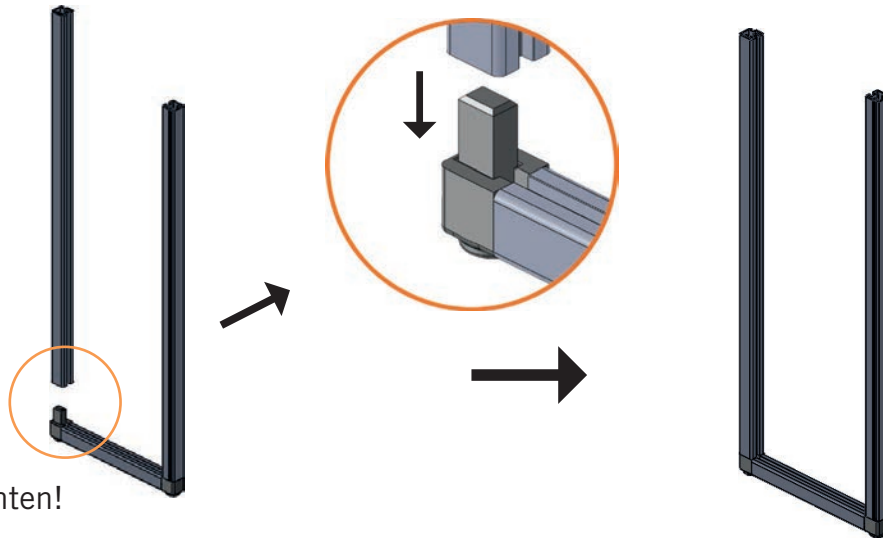
Bitte exakte
Länge beachten!
374 mm !



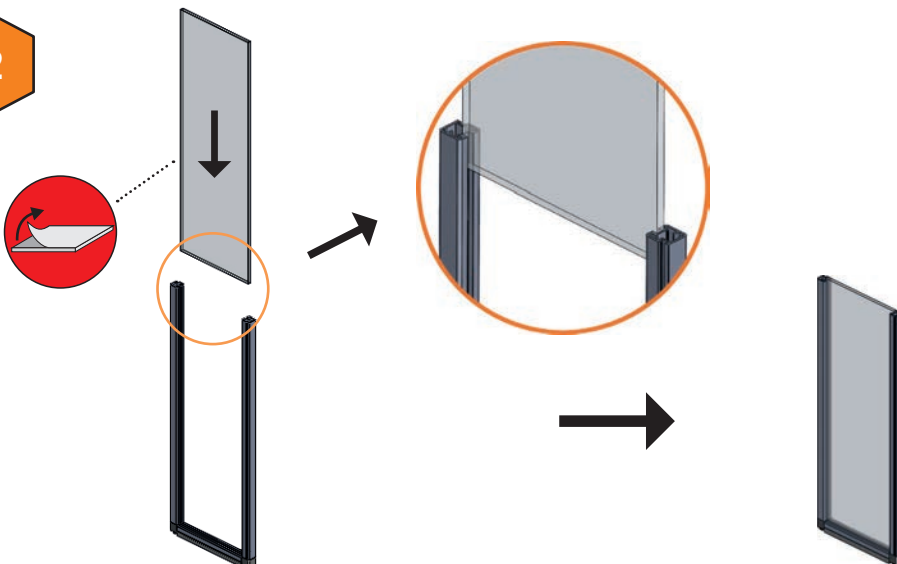
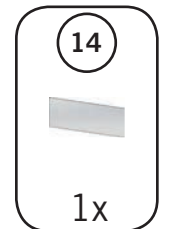
L1



Bitte exakte
Länge beachten!
374 mm !



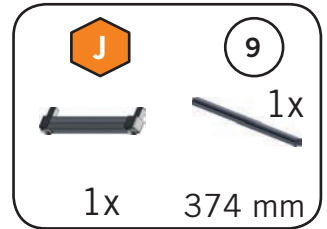
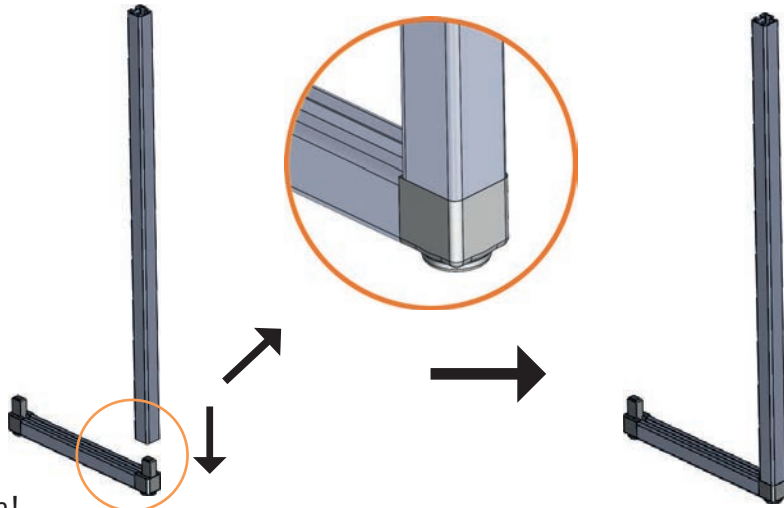
L2



M



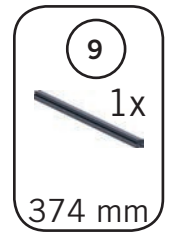
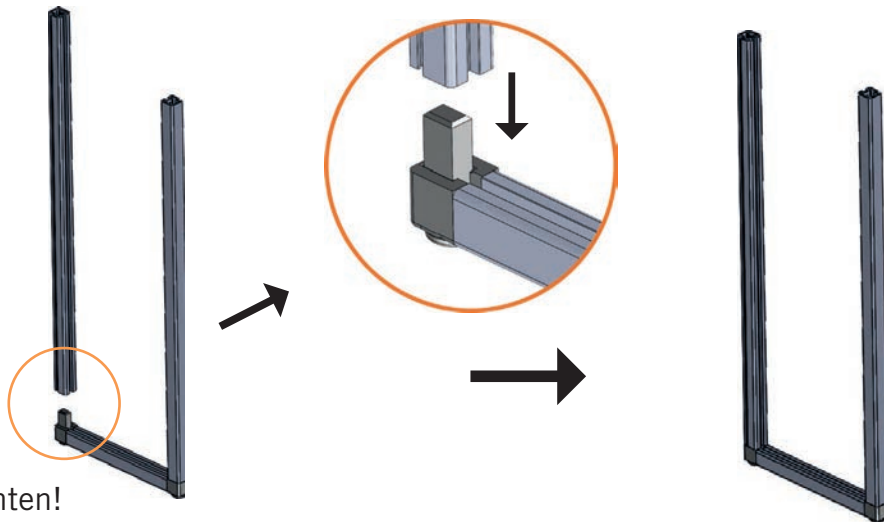
Bitte exakte
Länge beachten!
374 mm !



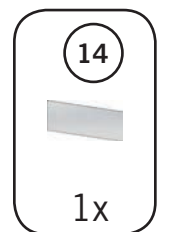
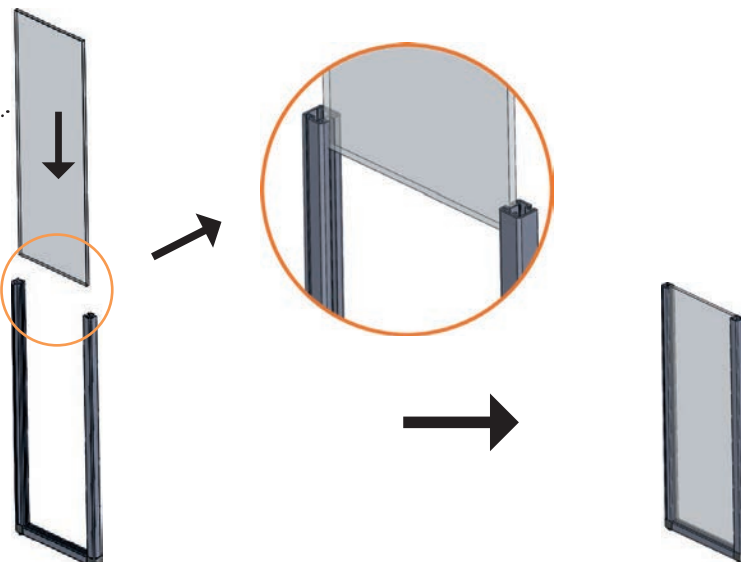
M1



Bitte exakte
Länge beachten!
374 mm !



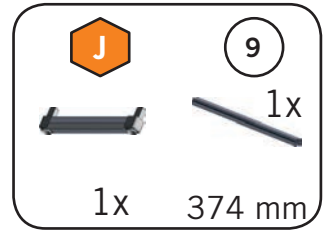
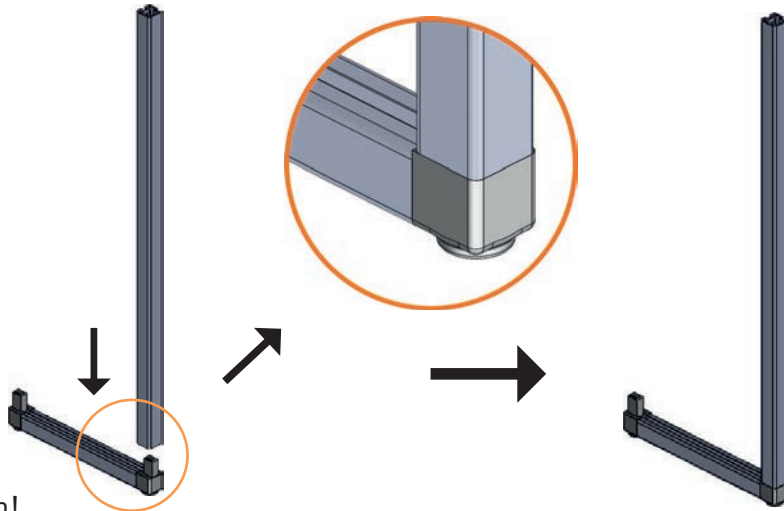
M2



N



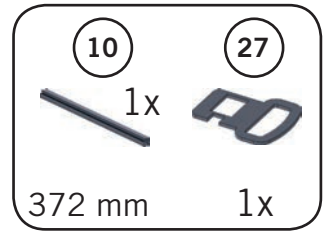
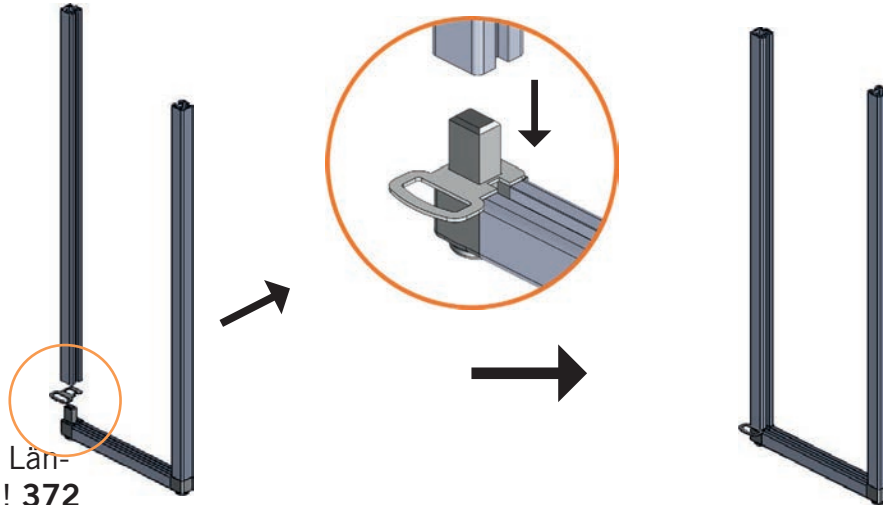
Bitte exakte
Länge beachten!
374 mm !



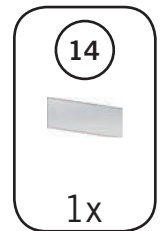
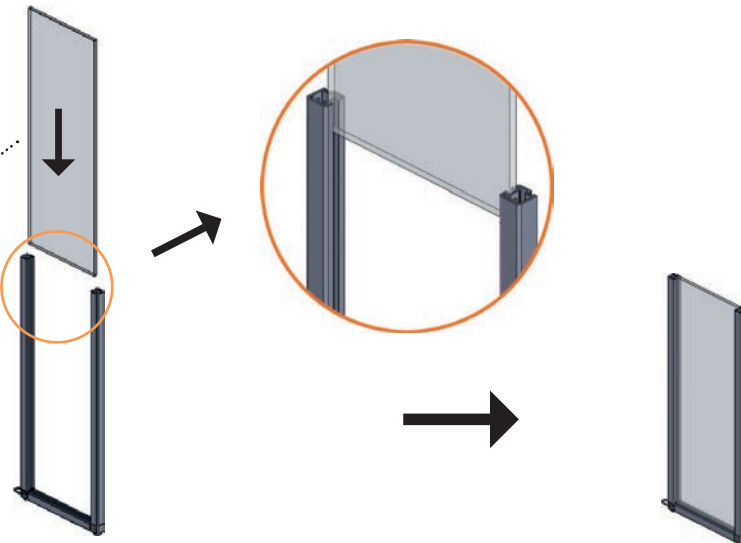
N1



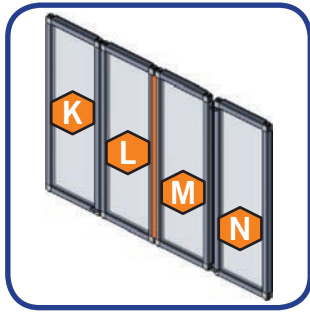
Bitte exakte Län-
ge beachten! 372
mm !



N2

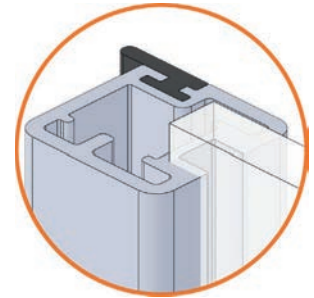
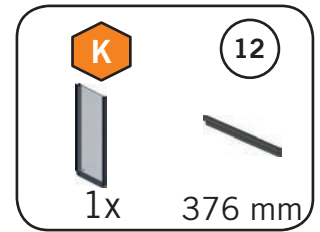
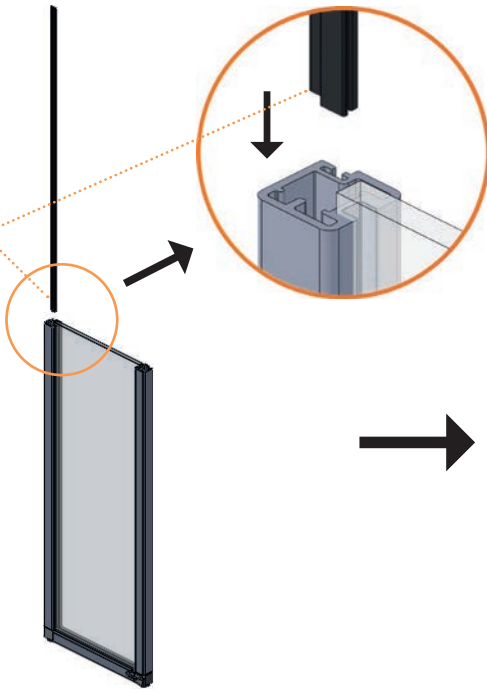


4

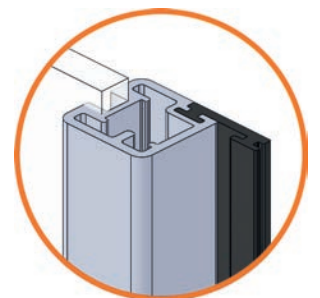
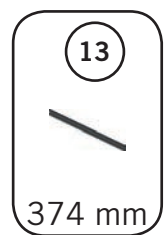
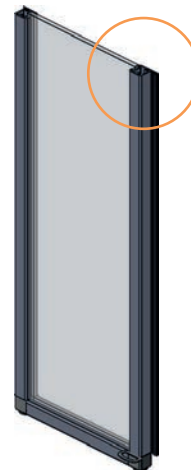
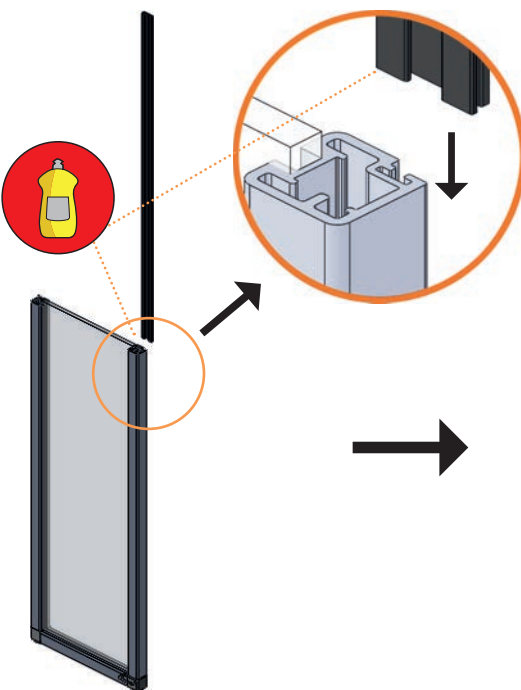


Fronttür

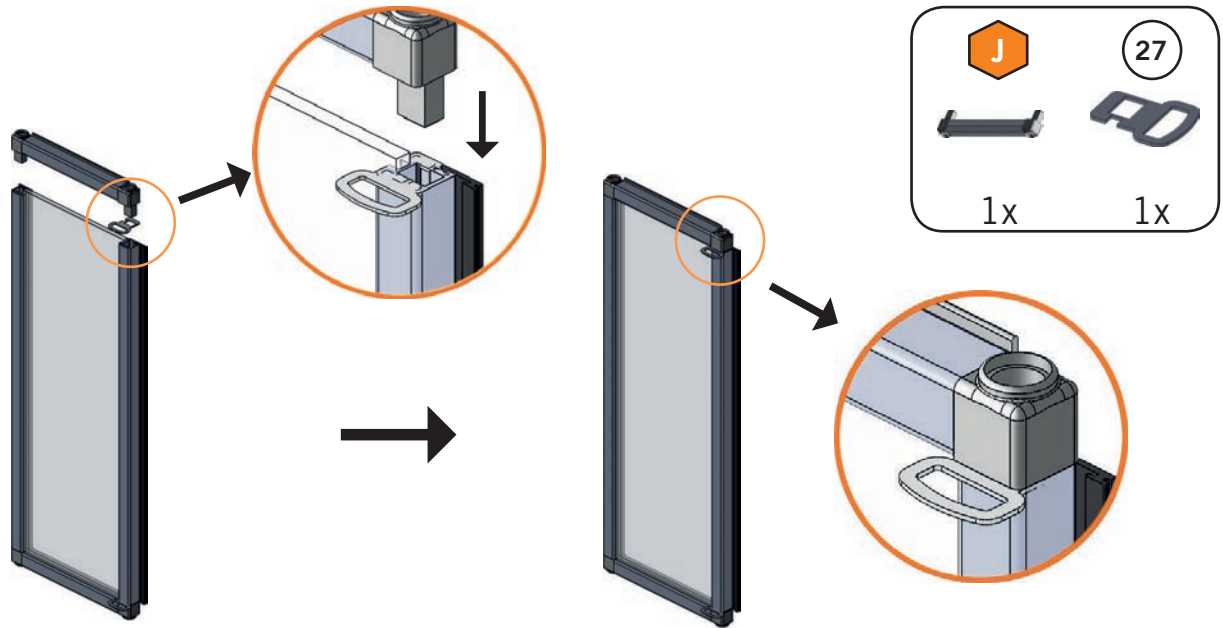
4.1



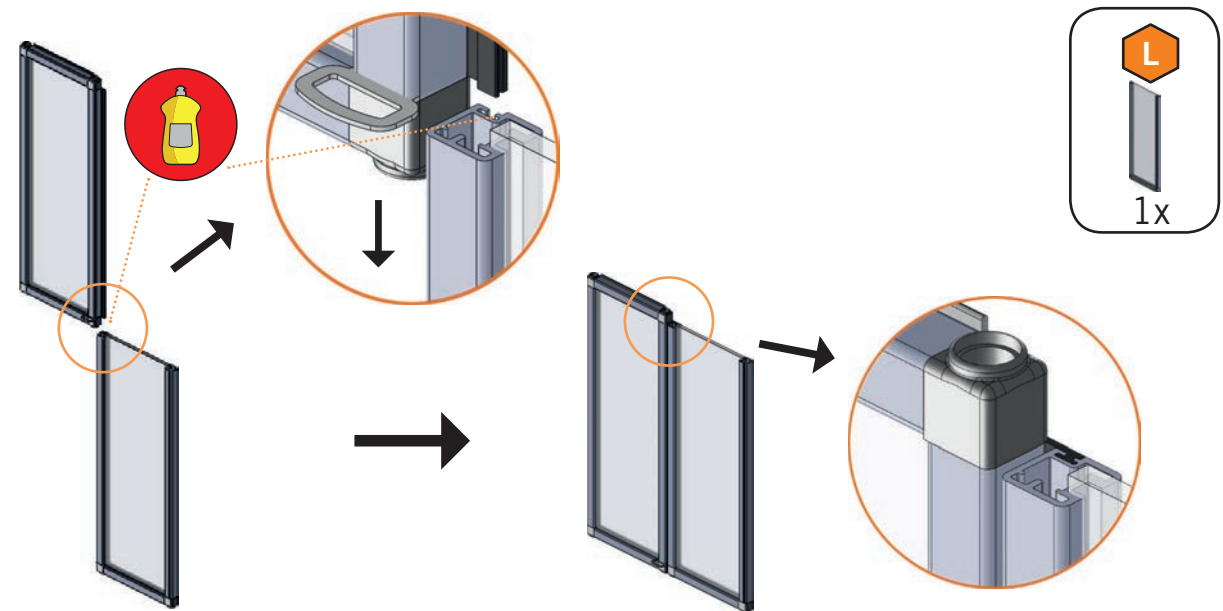
4.2



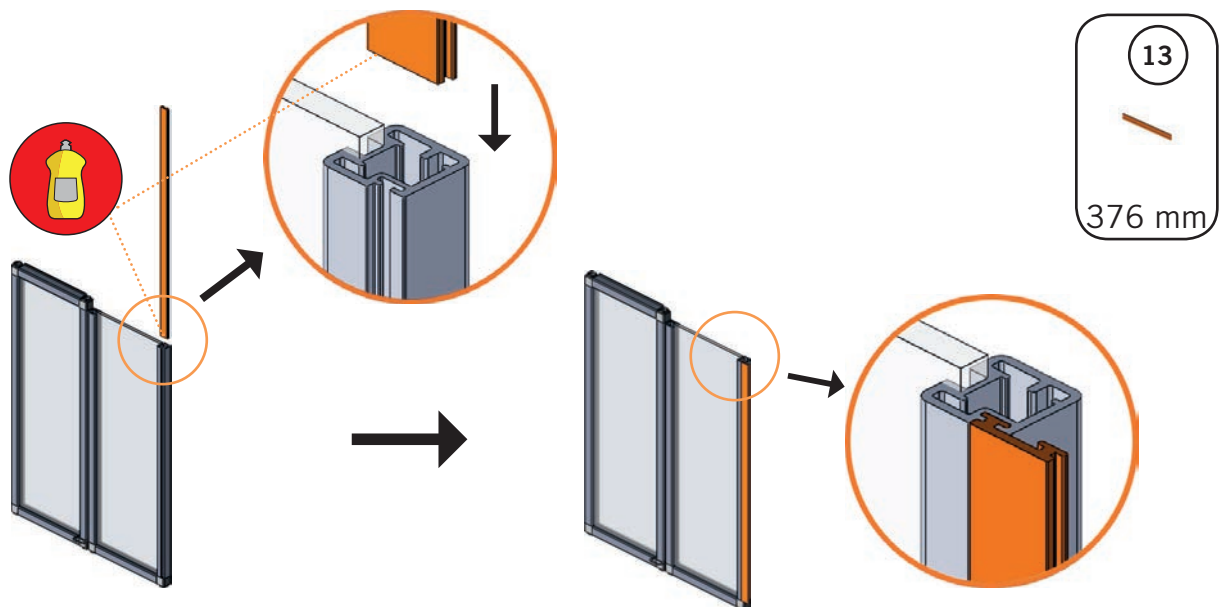
4.3



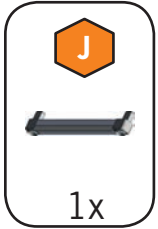
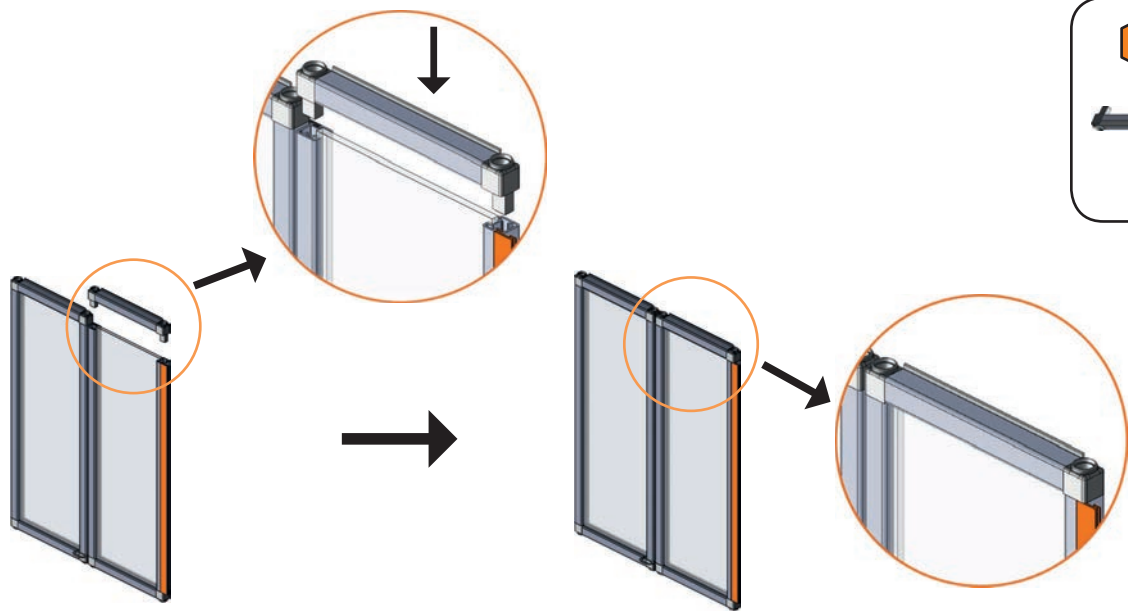
4.4



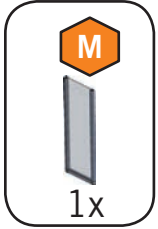
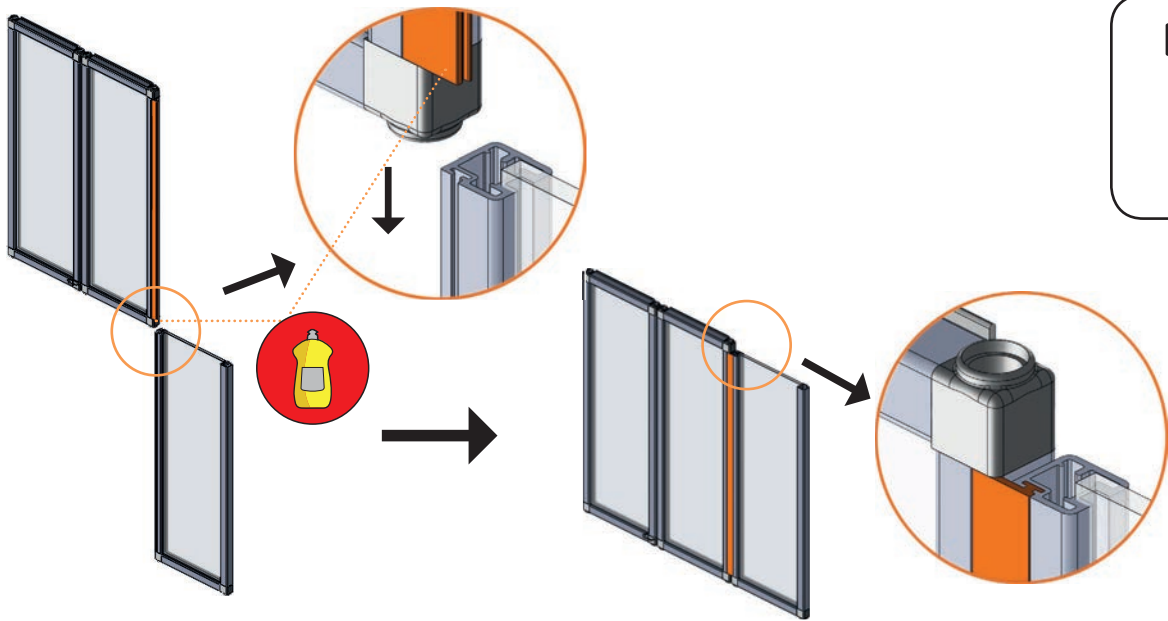
4.5



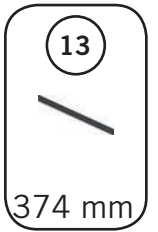
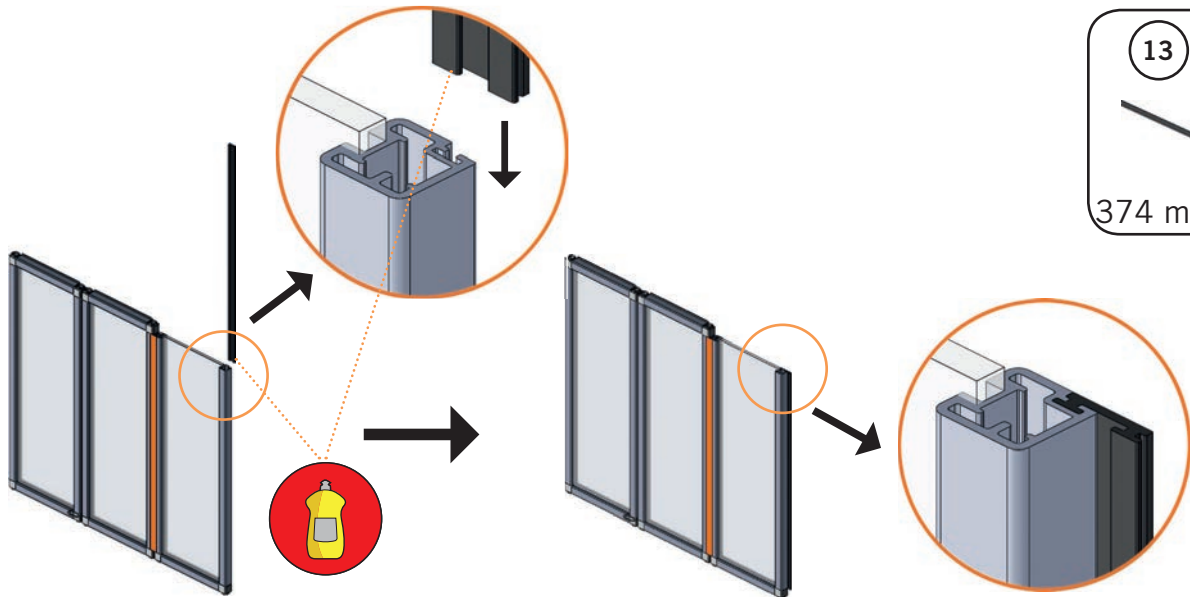
4.6



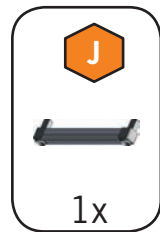
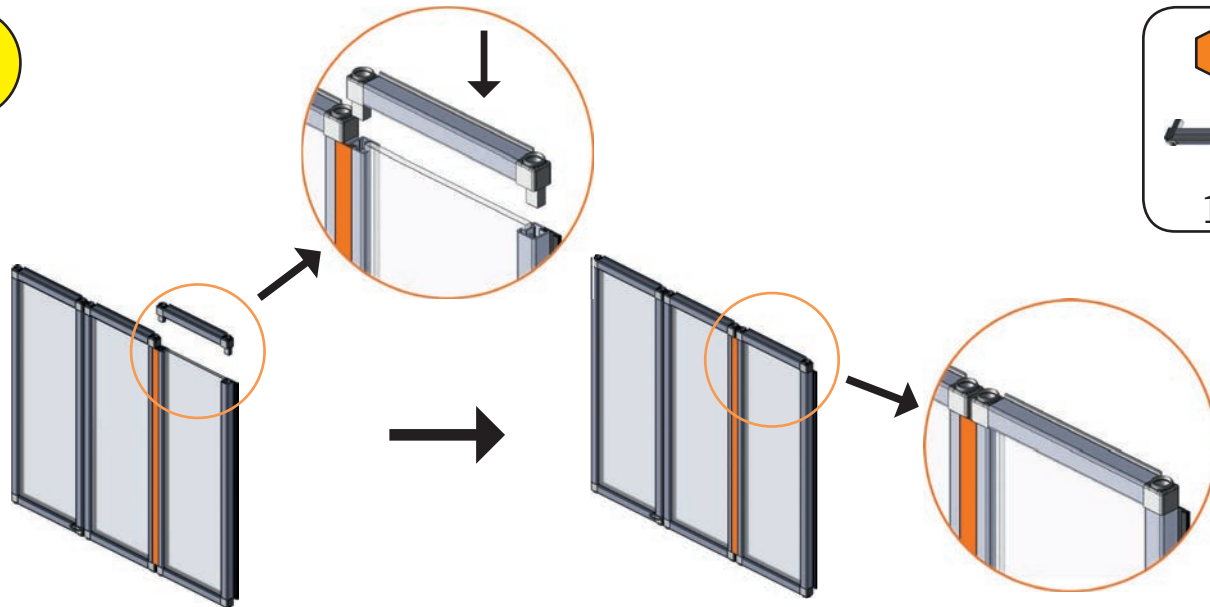
4.7



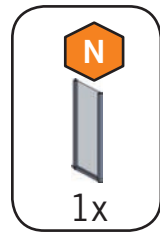
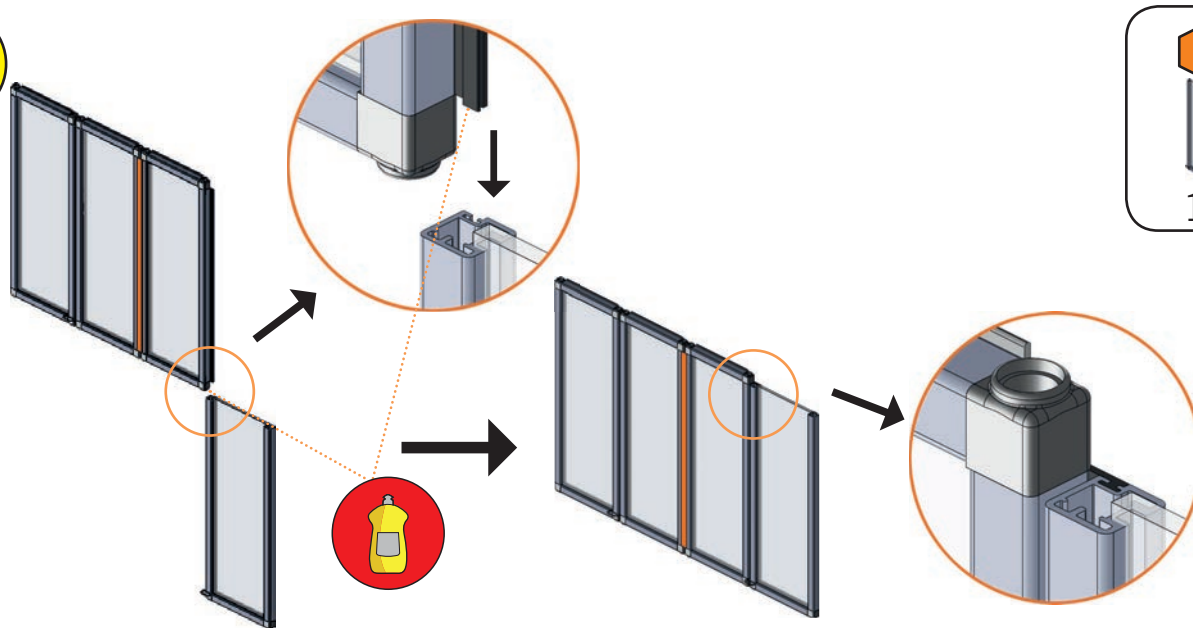
4.8



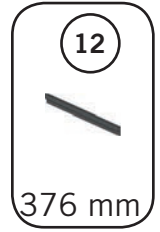
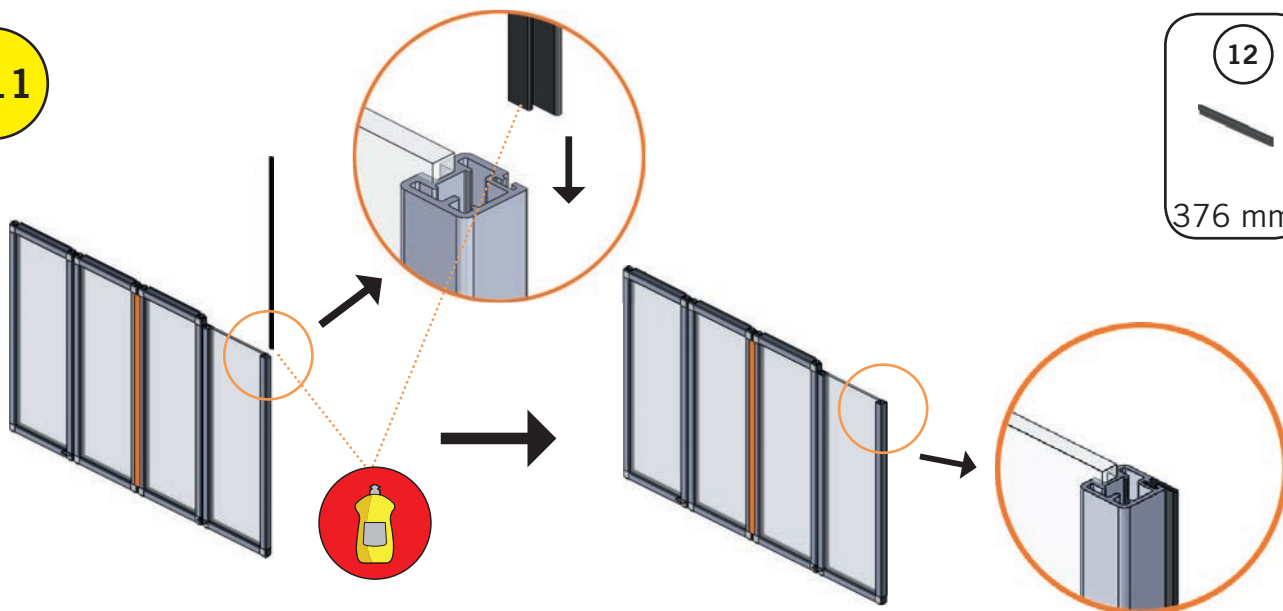
4.9



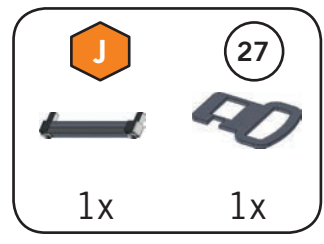
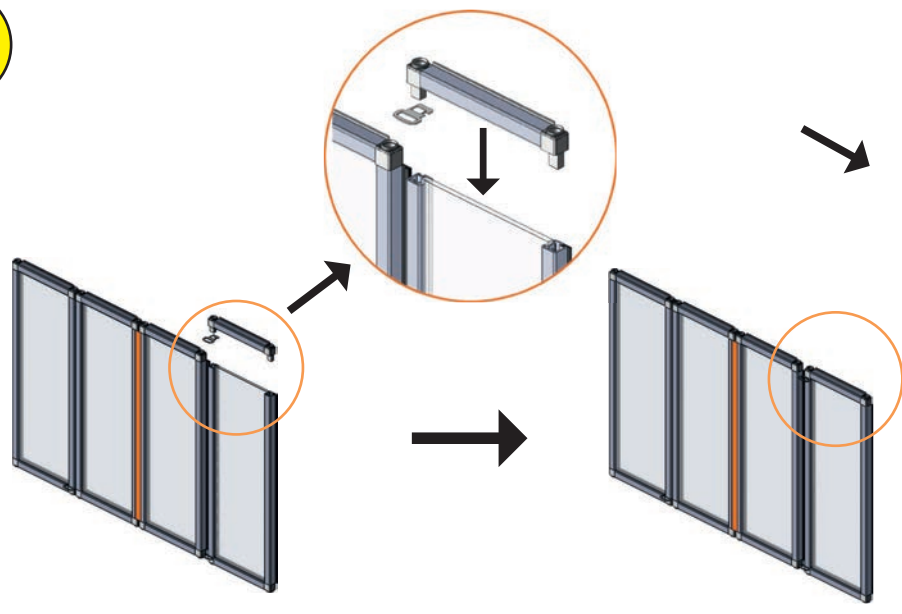
4.10



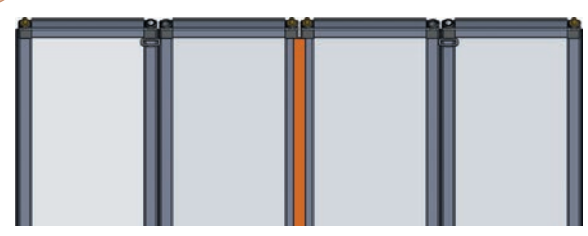
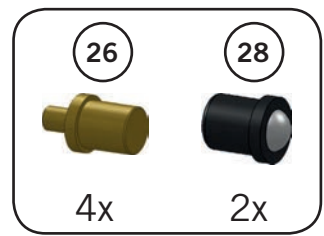
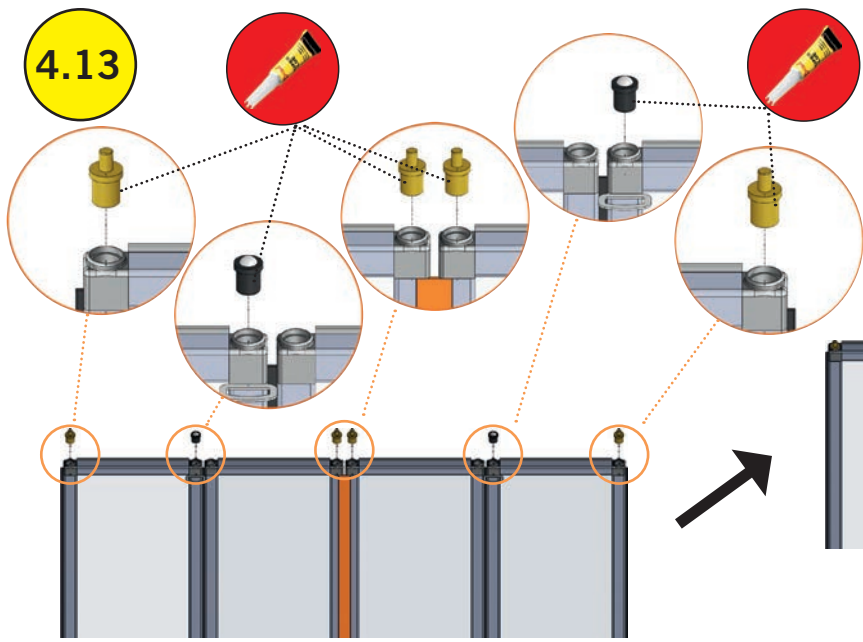
4.11



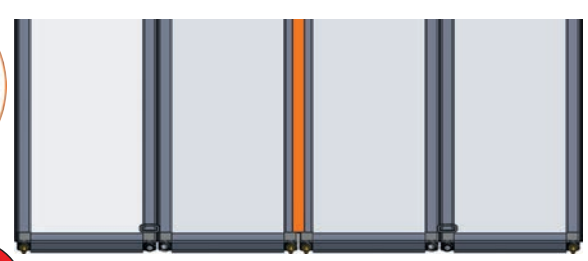
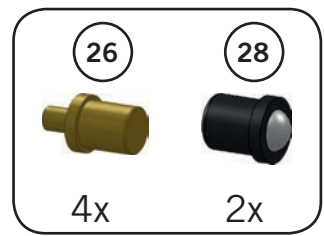
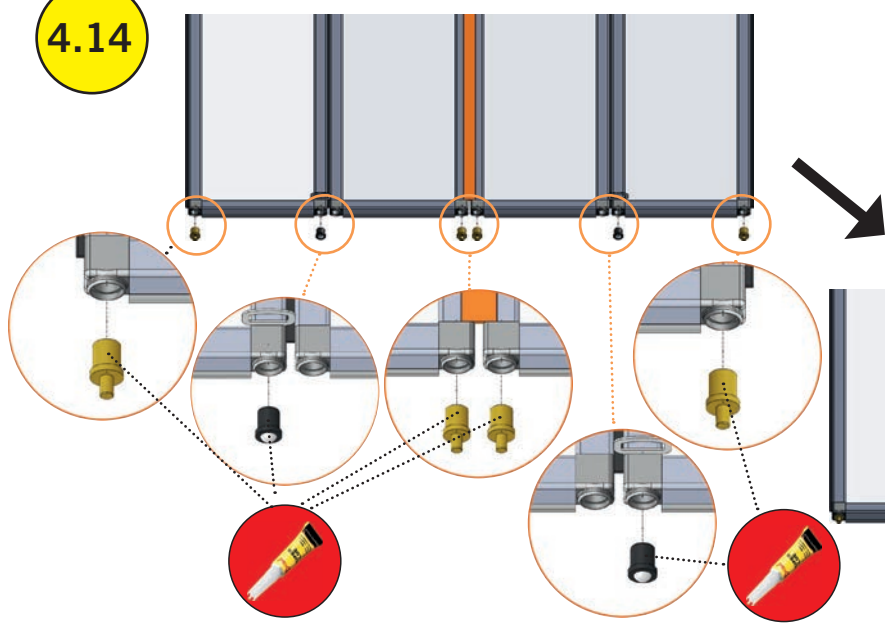
4.12



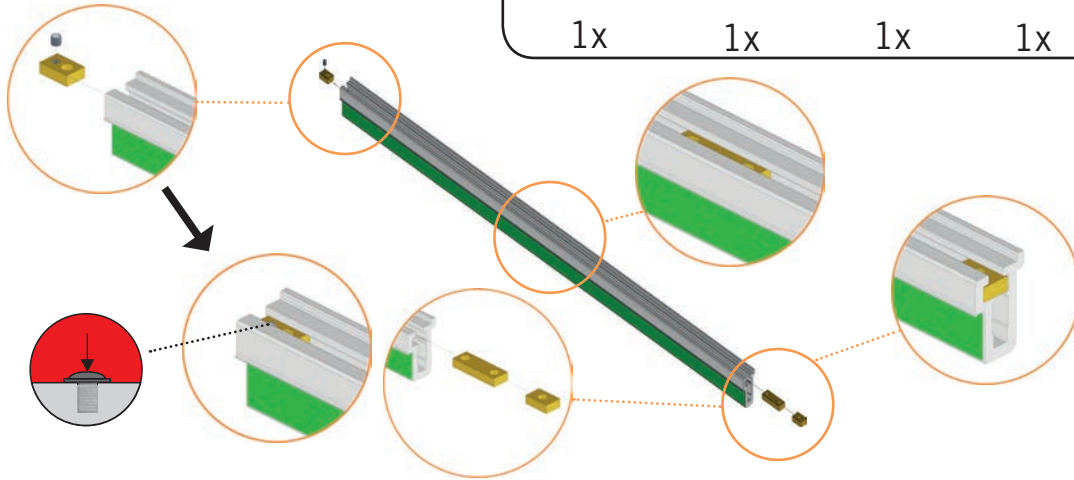
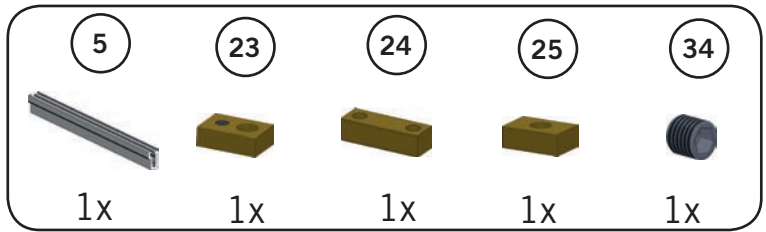
4.13



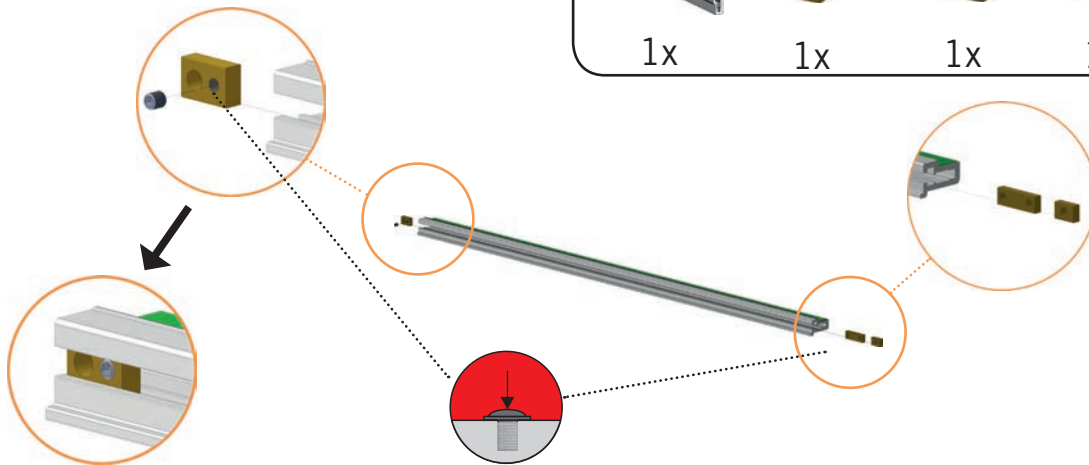
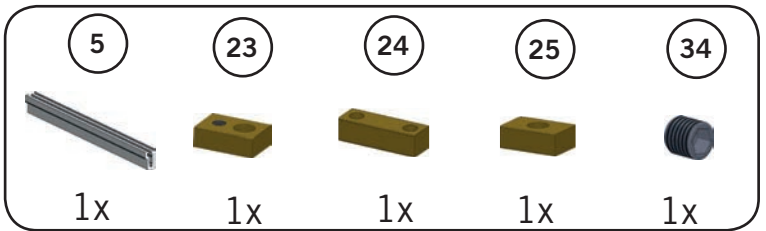
4.14



0



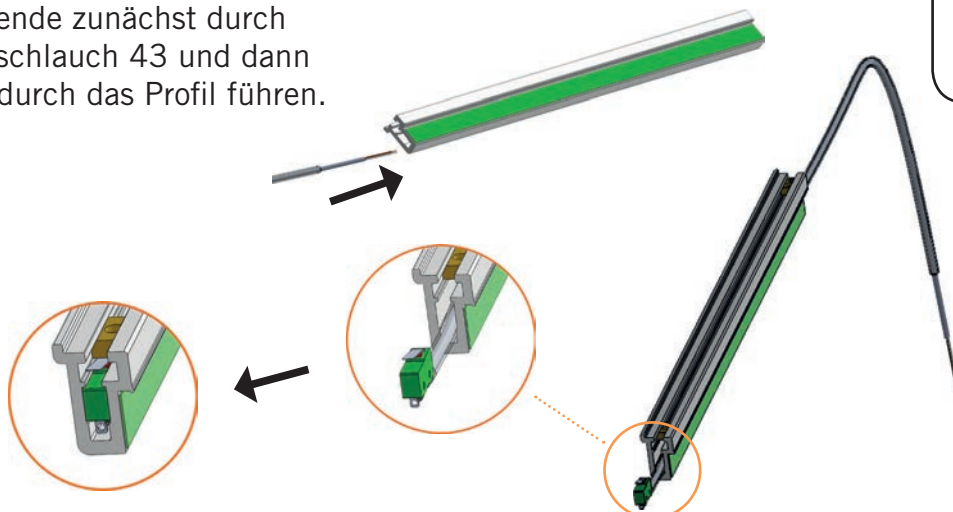
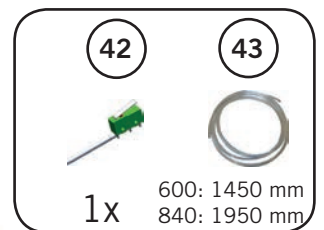
P



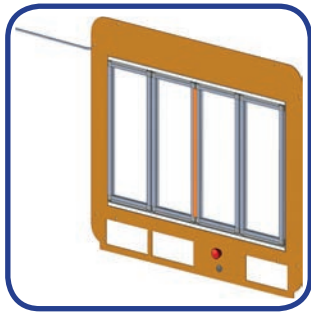
P1



Das Kabelende zunächst durch den Kabelschlauch 43 und dann vorsichtig durch das Profil führen.

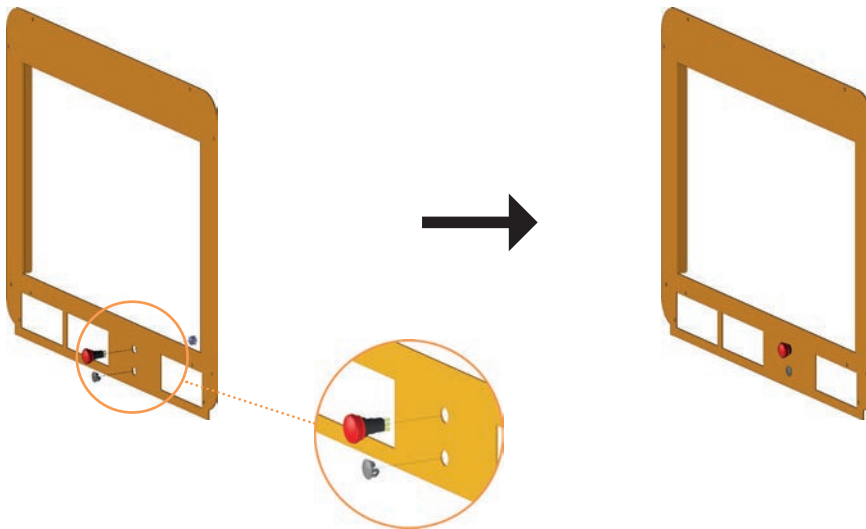
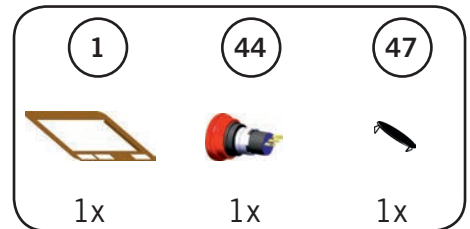


5

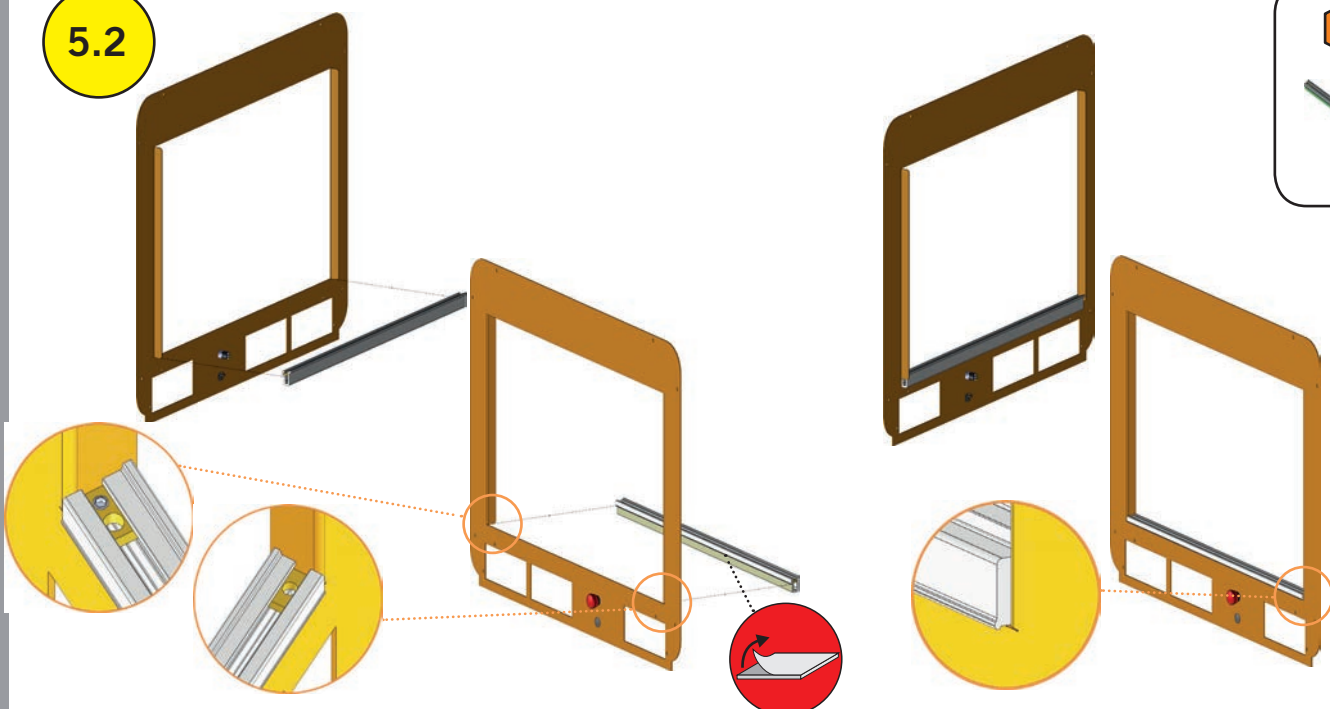
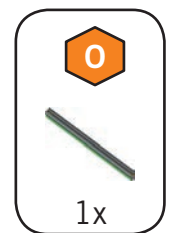


Gehäusefront

5.1

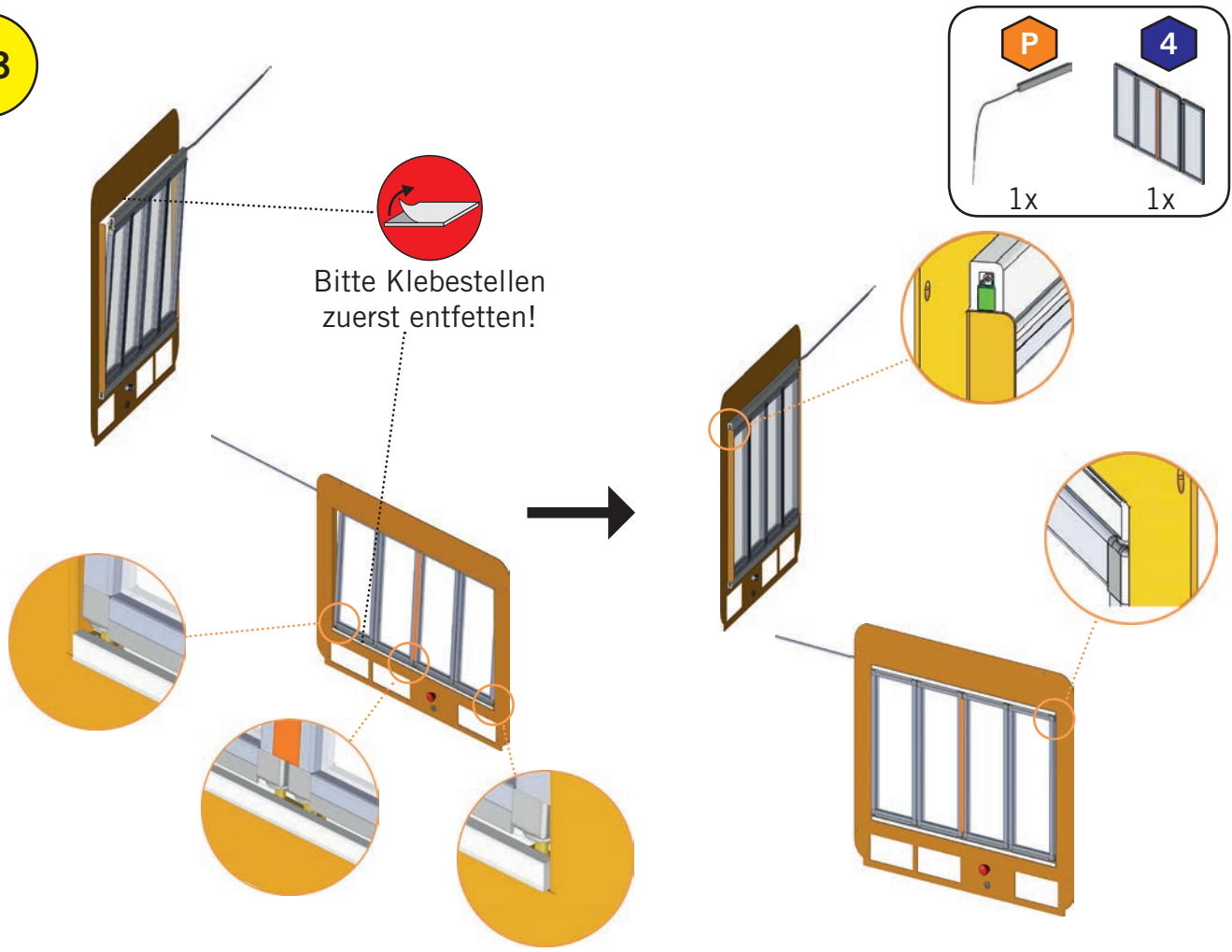


5.2

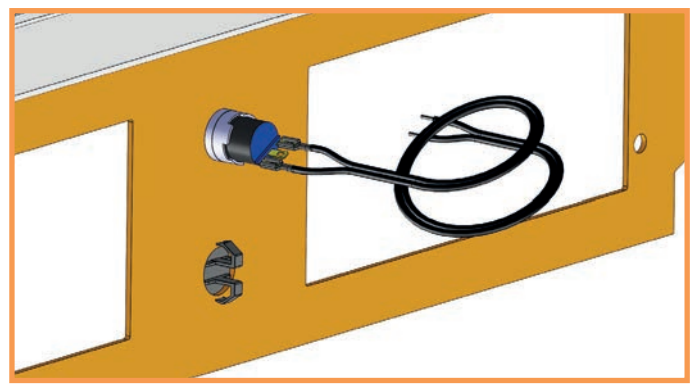
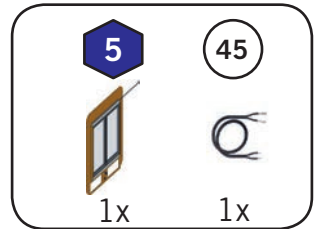


Bitte Klebestellen
zuerst entfetten!

5.3



5.4

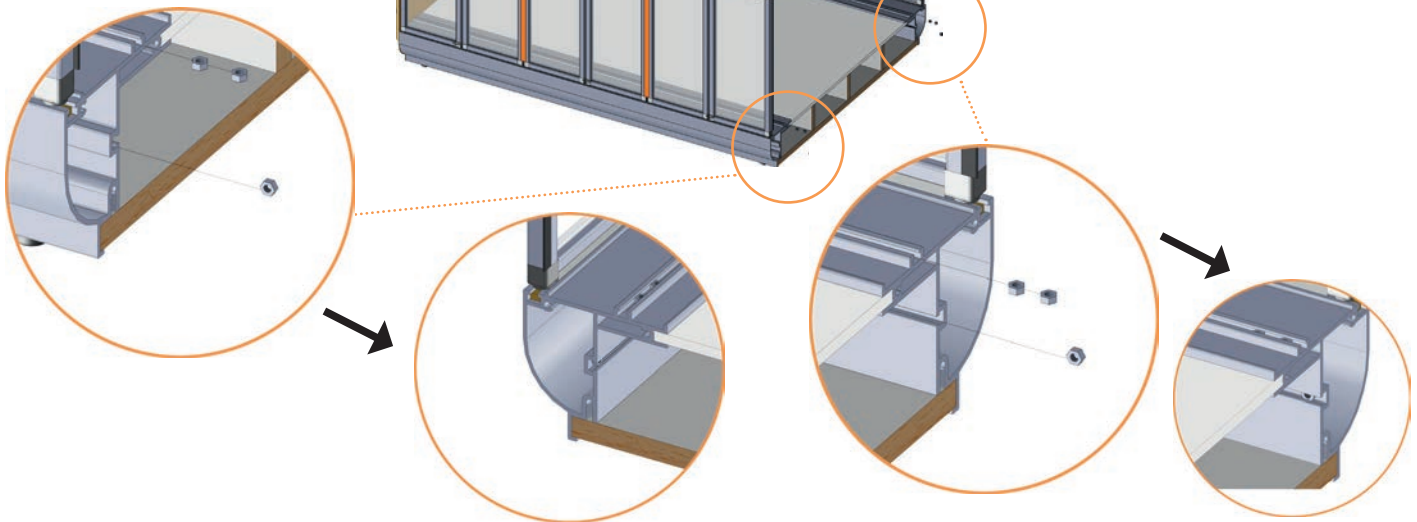
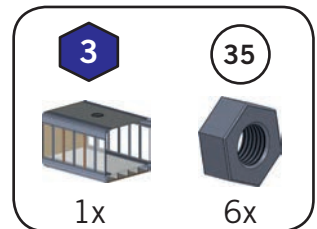
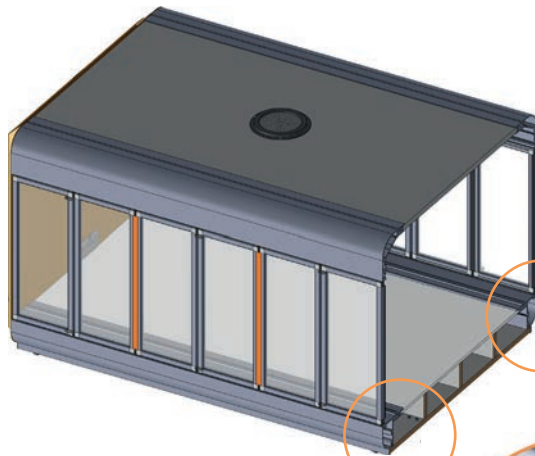


6



Endmontage

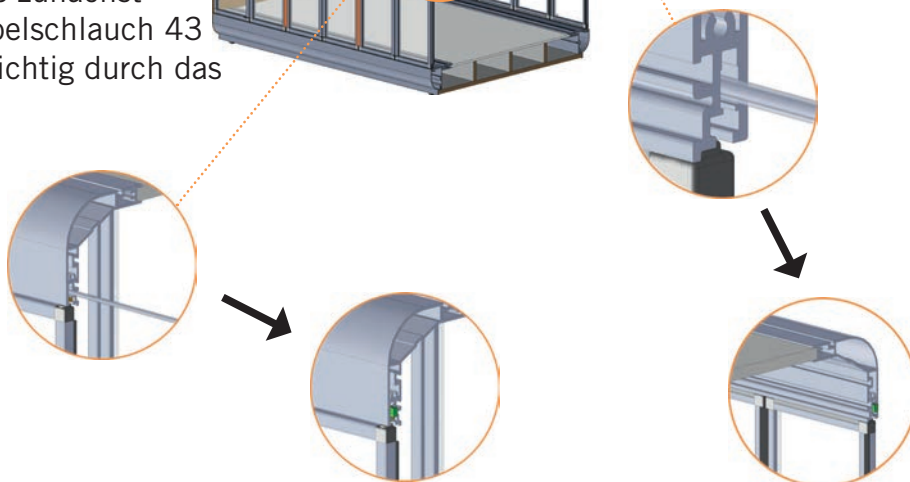
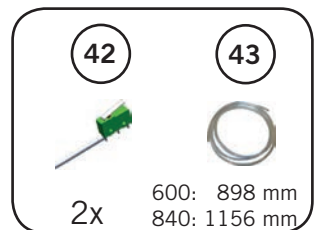
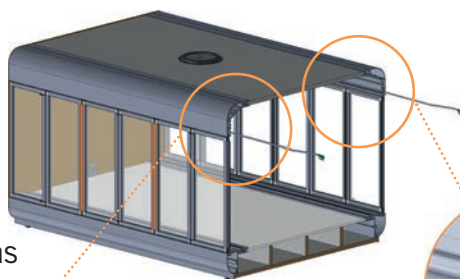
6.1



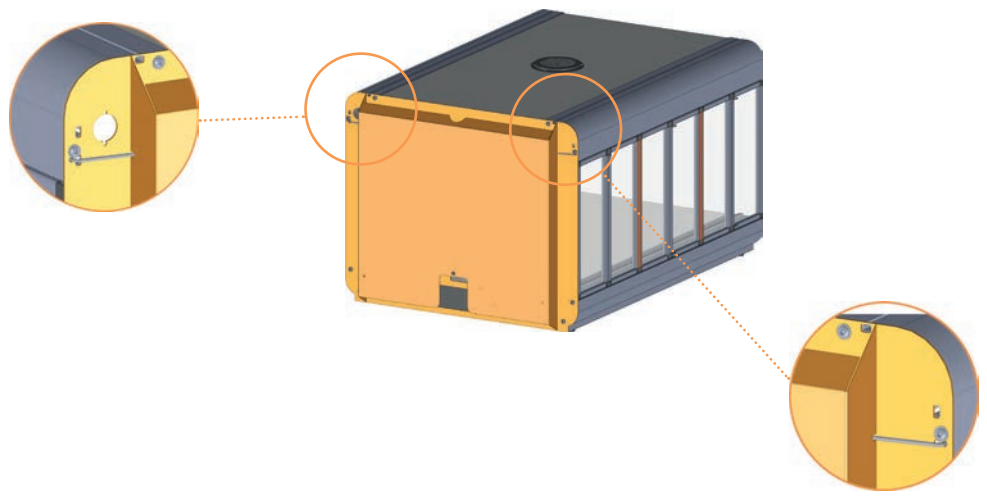
6.2



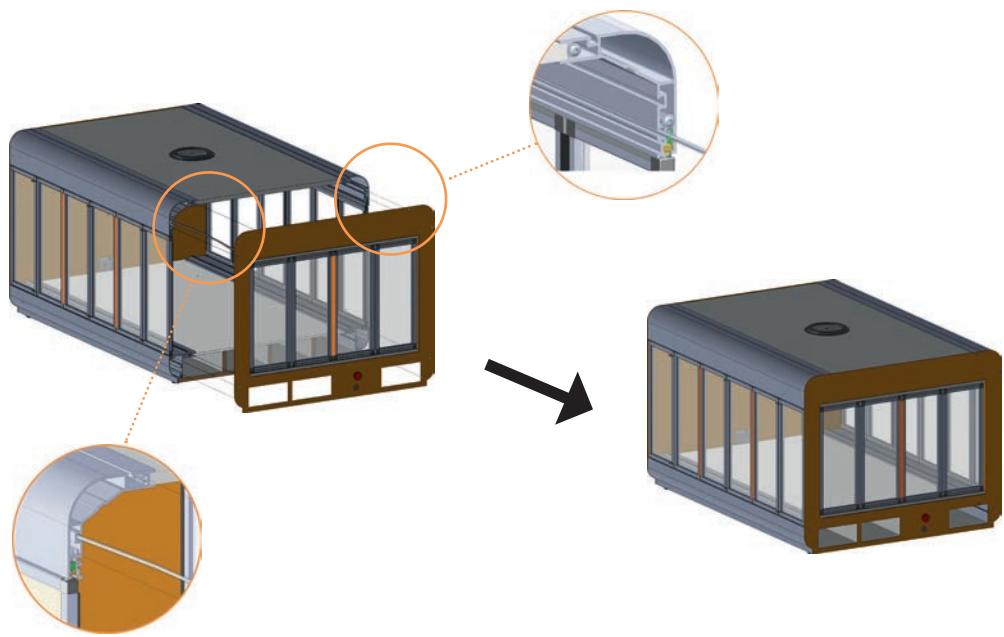
Das Kabelende zunächst durch den Kabelschlauch 43 und dann vorsichtig durch das Profil führen.



6.3

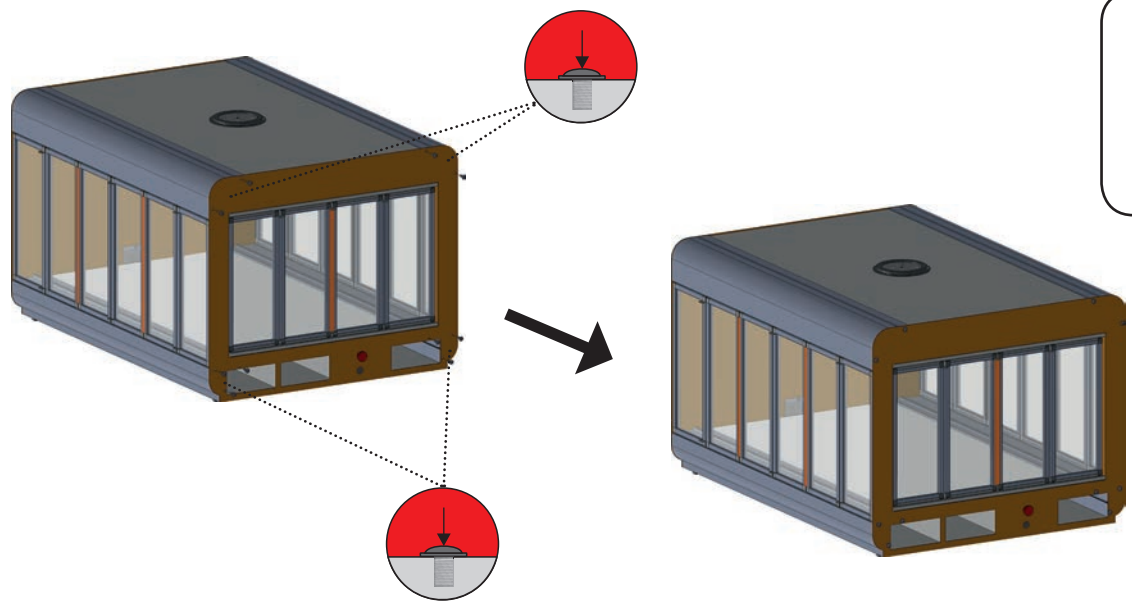


6.4



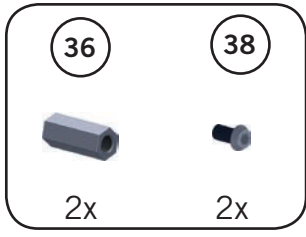
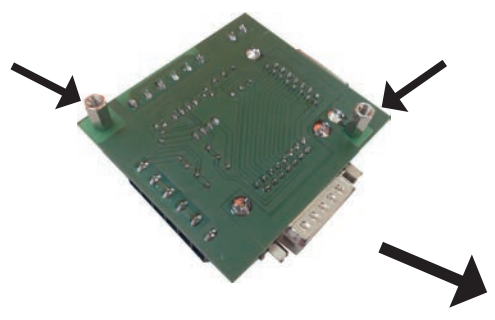
5
1x

6.5

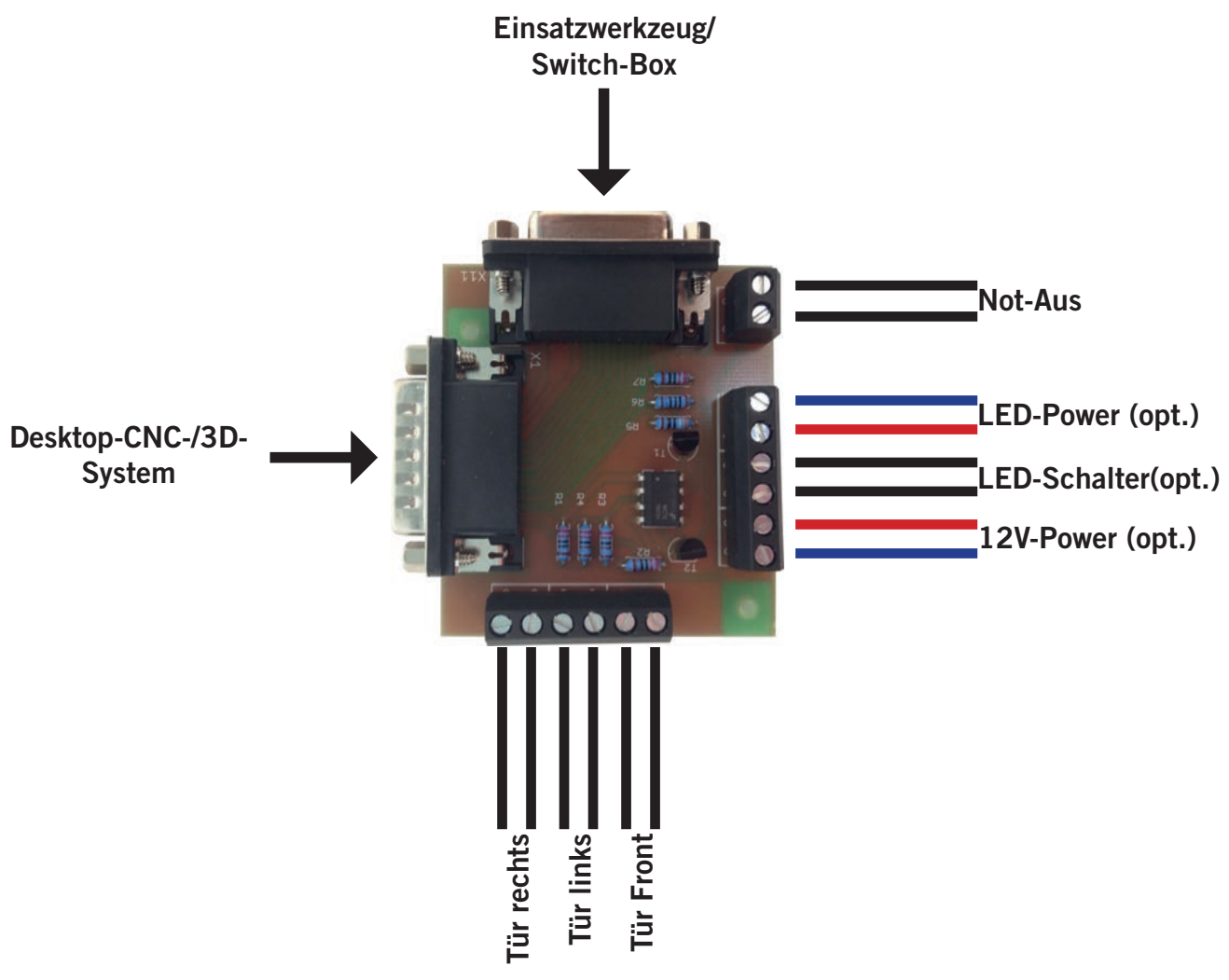


33
10x

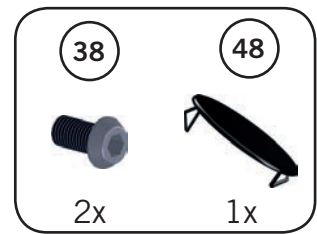
6.6



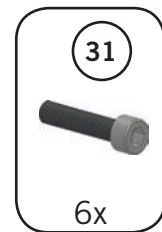
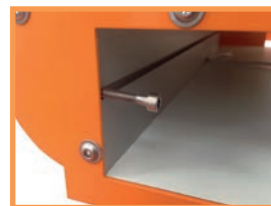
6.7



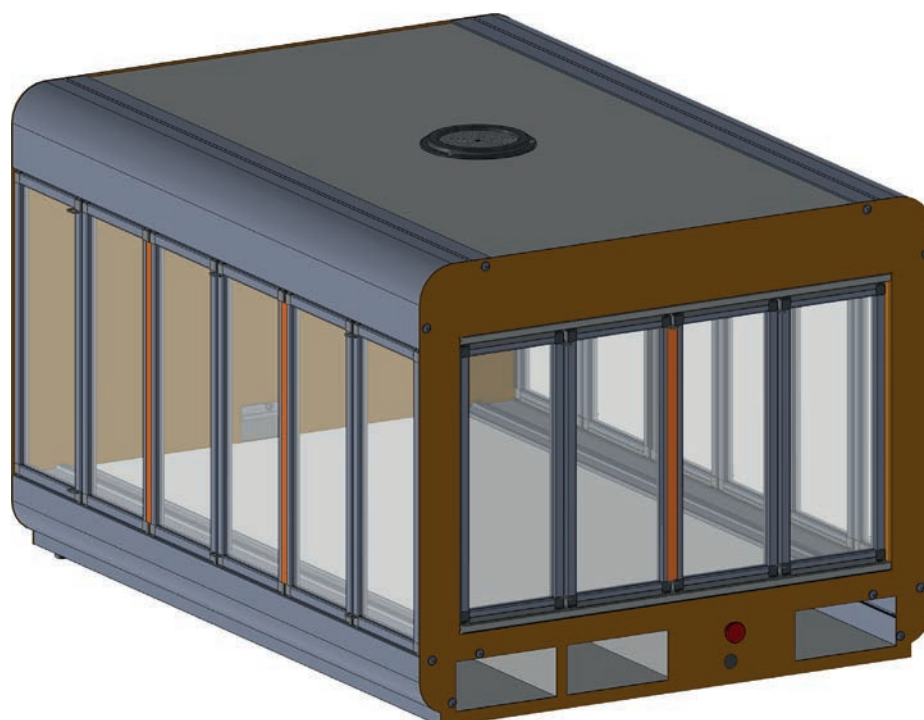
6.8




6.9



Mit den Zylinderkopfschrauben M5 x 30 mm können das **STEP-CRAFT** Desktop-CNC-/3D-System, Steuergeräte oder Switch-Box in der Umhausung in ihrer Endlage fixiert werden.





Stepcraft GmbH & Co. KG
An der Beile 2
58708 Menden
Germany

tel.: +49 (2373) 179 11 60
fax: +49 (2373) 179 11 59
info@stepcraft-systems.com

© Stepcraft 2017