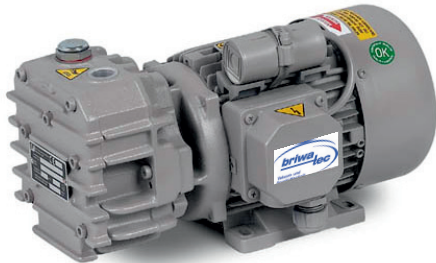


Rotary Vane- Vacuumpump dry running



ZIRKON D010 V

0,37 kW (50 Hz)

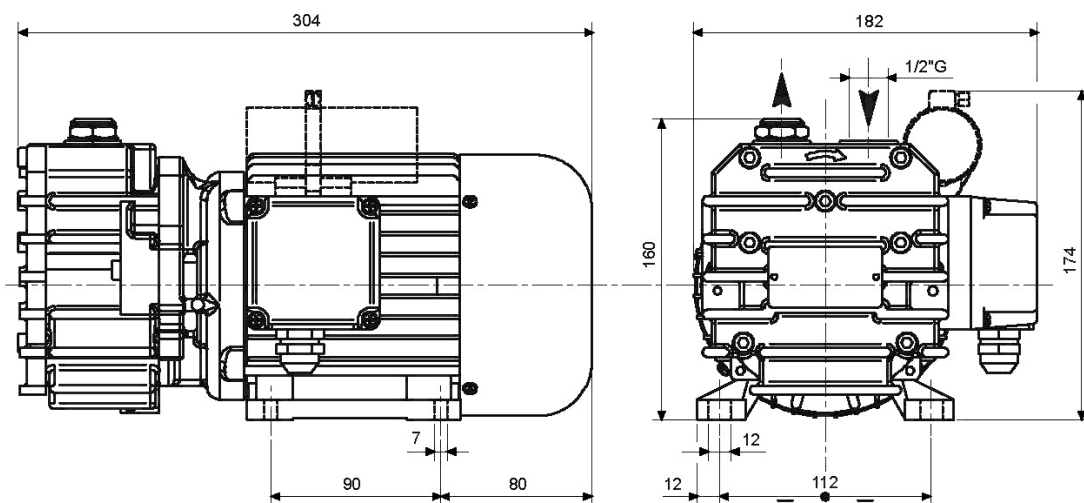
0,45 kW (60 Hz)

Motor: Protection Class IP 55; Insulation Class F

	article code	kW	V	Hz	min ⁻¹	m ³ /h	mbar ,abs	dB(A)	kg
Single Phase	5098010281	0,37	220-240 ~	50	1400	10	120	64	15,5
		0,45	220-240 ~	60	1700	12	120	66	15,5
	5098010282	0,37	110 ~	50	1440	10	120	64	15,5
		0,45	110 ~	60	1730	12	120	66	15,5
Three Phase	5098010280	0,37	175-260 Δ 300-450 Y	50	1400	10	120	64	14
		0,45	200-300 Δ 346-520 Y	60	1700	12	120	66	14

Dimensions

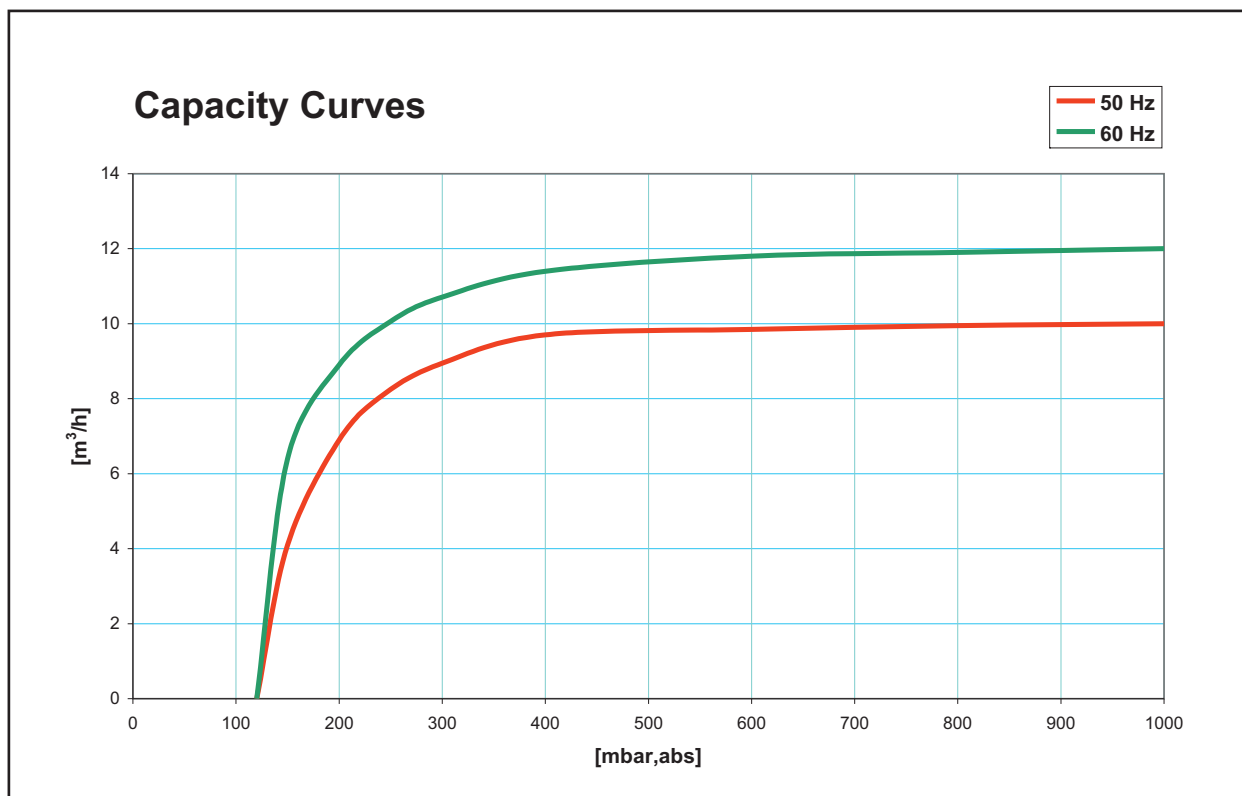
all dimensions in mm



We reserve the right to alter technical information!

briwatec GmbH
Schönauer Strasse 62
D-79669 Zell im Wiesental

Phone +49 (0) 7625 918 868 0
Fax +49 (0) 7625 918 868 33
Email: info@briwatec.de
<http://www.briwatec.de>



The capacity is related to suction conditions at inlet connection.

We reserve the right to alter technical information!

briwatec GmbH
Schönauer Strasse 62
D-79669 Zell im Wiesental

Phone +49 (0) 7625 918 868 0
Fax +49 (0) 7625 918 868 33
Email: info@briwatec.de
<http://www.briwatec.de>