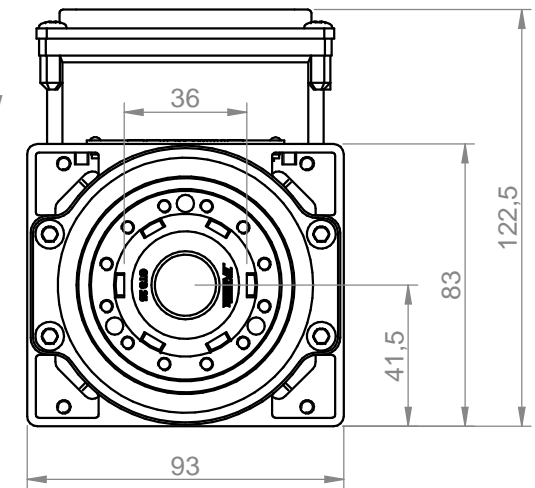


Electric fan
24V DC - 25W



Power [kW] 2.2	Duty Cycle S1	Base speed [rpm] 18000	Base freq. [Hz] 300	Base voltage Δ [V] 220	Base voltage Y [V] 380	Protection IP54	Ins. Cl. F
Min speed [rpm] 6000		Max speed [rpm] 24000	Max freq. [Hz] 400	Absorb. Δ [A] 8.6	Absorb. Y [A] 5.0	Part number on nameplate COM41470533	
Balancing: G2.5 - ISO 1940 @ maximum motor speed		Balancing type		tool type full key	tool type half key	Peso / weight 8.50 kg	
Tolleranze non quotate / unlisted tollerances: ±0.5mm Smussi non quotati / unlisted chamfers: ±0.5mm				$\nabla = 0.8 \nabla$	$\nabla = 3.2 \nabla$	$\nabla = 12.5 \nabla$	$\sim = \nabla$
rev. n° 00	description Emissione			date 25/02/2016	signature D. Bottarel	Customer Catalogo	
drawing code COM41470533						Drawing n° 4398	
drawn - date D. Bottarel - 25/02/2016	approved - date S. Perli - 25/02/2016	checked - date S. Perli - 25/02/2016	sostituisce il sostituito dal		foglio / sheet 1 / 1	scala 1:2	A4

TEKNOMOTOR

Teknomotor S.r.l.
Via Argenege 31, I-32038 Quero Vas (BL)
www.teknomotor.com

Title
4147-C-DB-P-ER25-SV-HY-RH