



# Assembly Instructions Spindle adapter plates for Hobby-Line

## Description

A large variety of devices from different manufacturers can be used as work spindles in the CNC machines of the Hobby Line. Milling motors with 43 mm Euro clamping neck can be mounted directly in the spindle holder without any further aids.

Milling spindles with screws on the back of the housing, however, require an adapter plate with suitable holes. The present set of base plate and adapter plate fits the following spindle motors:

- Mafell WS
- AMB FME-U / FME-W
- Teknomotor HF Motor 270 / 400 Watt
- Teknomotor HF Motor 600 Watt ER 16



Fig. 1: Fully assembled AMB FME-U spindle



### Attention!

Do not mount a milling spindle with more than 1100 watts of power! The construction of the Hobby-Line is not designed for the forces that then arise. For milling spindles with higher performance, we recommend the portal milling machines of the Compact and Alu-Line.

## Scope of delivery

Illustration	Description	Number
	Base plate	1
	Adapter plate	1
	Flat head screw with hexagon socket M6x12 ISO 7380	20
	T-nut slot 6, M6	4

## Assembly

- First, remove the spindle holder from the lower end of the Z-axis profile.
- Move the Z-axis to the topmost position.
- From the labeled side, insert screws **S** into the holes in the base plate **1** and screw on the slot nuts **N** one turn each.
- Insert the loosely screwed-on slot nuts into the grooves of the Z-axis profile from below and slide the base plate into position (see Fig. 2). Tighten the screws.
- Mount your milling spindle on the labeled side of the adapter plate **2**.
- Screw the spindle and adapter plate to the base plate with ten additional screws **S**.
- Finally, mount the spindle holder back in its place at the lower end of the Z-axis profile - but now with the collar mount to the rear.

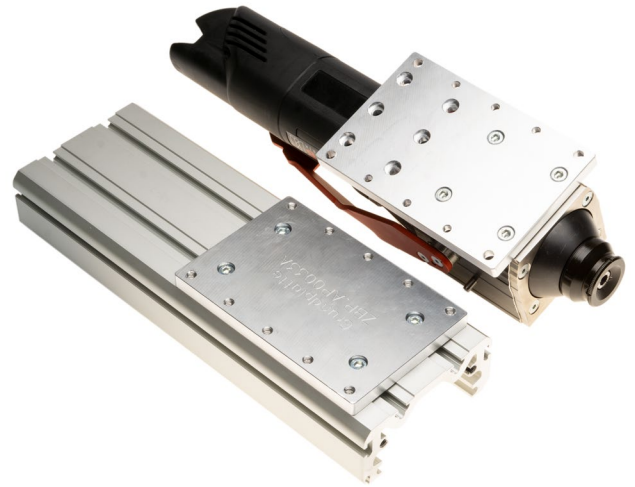


Fig. 2: Base plate on Z-axis profile,  
Spindle on adapter plate