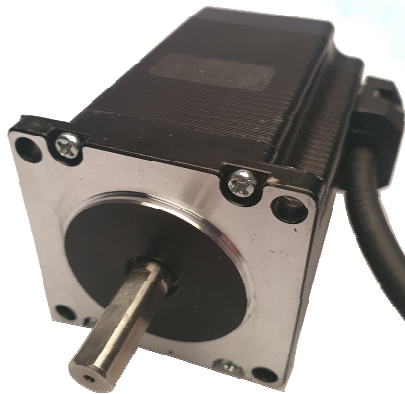
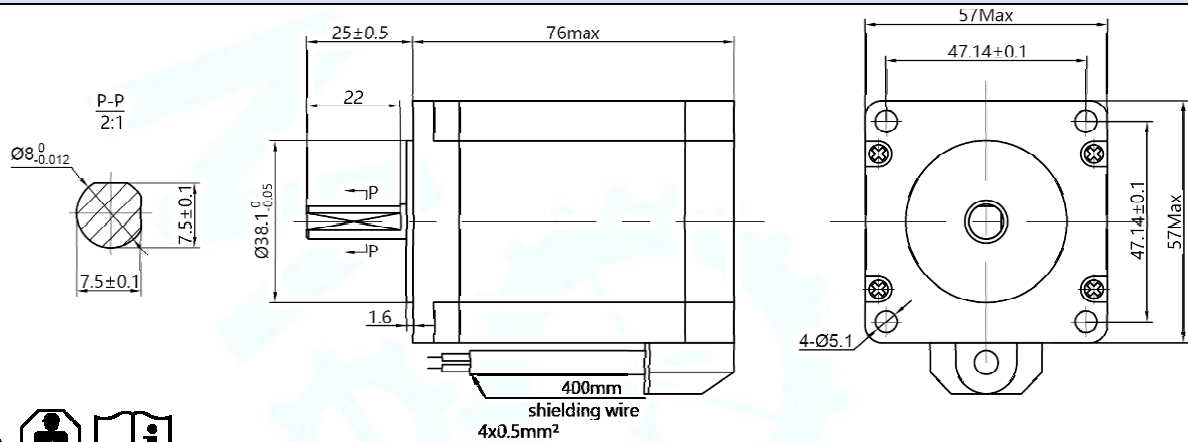
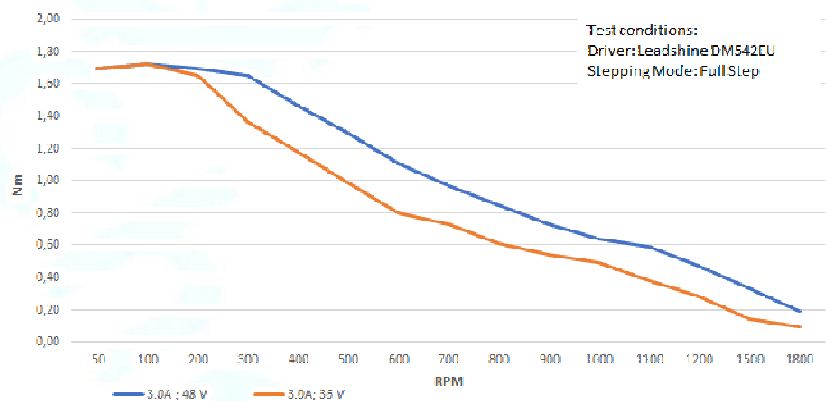


Hybrid Stepper Motor 57BYGH250E-BRD

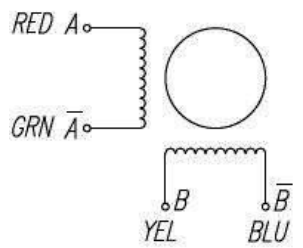






Mechanical Dimensions:



57BYGH250E BRD



Electrical Specifications:

Cable Type: shielded Cable suitable for drag chain, Cable length 0,4 m 4 x 0,5 mm ² (alt. AWG 20)	Bipolar			
				
No. of phases	2			
Rated Voltage (V)	4.2			
Current (A)	3.0			
Resistance (Ω)	1.4			
Inductance (mH)	3.5			
Holding Torque coils on DC (Nm)	1.8			
Dynamic Torque (Nm)	1.5			
Rotor Inertia (gcm ²)	480	Allowable Axial Load (N)	15	
Insulation Class	B	Allowable Radial Load (N)	75	
Insulation Resistance	100MΩ, 500VDC	Max. Voltage Input (VDC)	60	
Weight (kg)	1.2	Max. Starting Pulse Rate	3 kHz / FullStep	
Step Angle (°)	1.8	Max. Slewing Pulse Rate	19 kHz / FullStep	
Pictographs / Symbols		Hot Surface: Let device cool down before maintenance		Operations may only be executed by qualified Electricians
Piktogramme / Symbole		Heiße Oberfläche: Gerät vor der Wartung abkühlen lassen		Arbeiten dürfen nur von qualifizierten Fachkräften ausgeführt werden
				Read data and instructions carefully before initial operation
				Lesen Sie die Daten und Anweisungen vor der ersten Inbetriebnahme sorgfältig durch