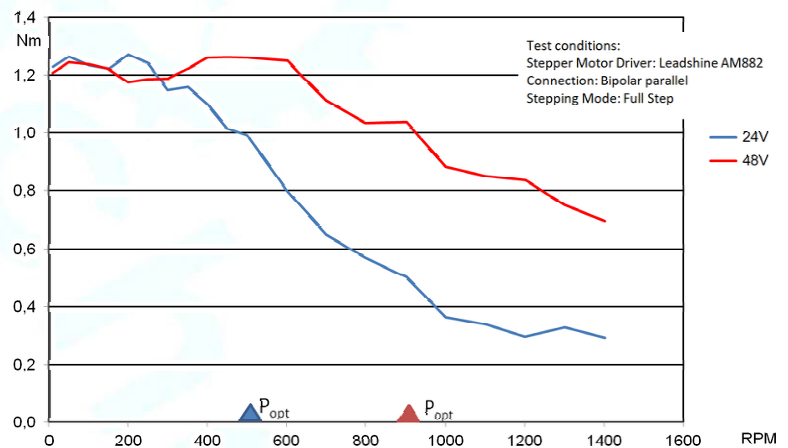
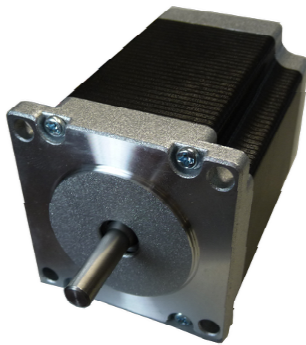
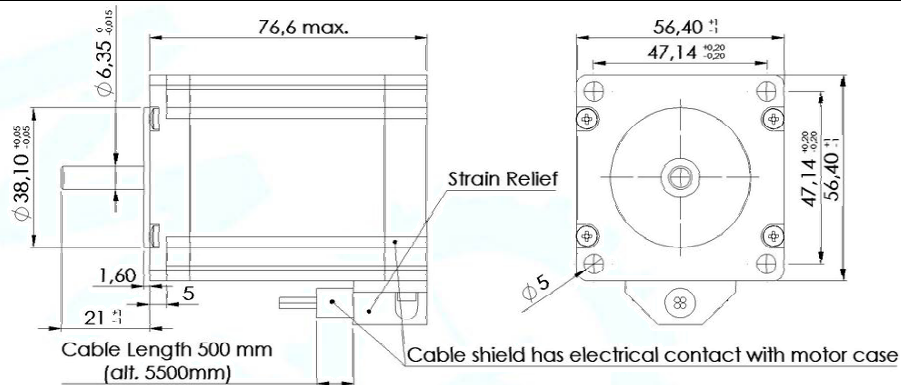


# Hybrid Stepper Motor 57BYGH250E-05BR

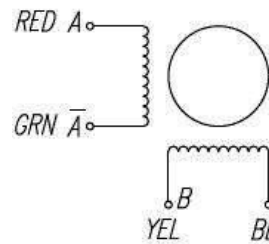
## Mechanical Dimensions:









## Electrical Specifications:

**Cable Type:**  
shielded Cable suitable for drag chain,  
Cable length 0,5 m (alt.5.5m)  
4 x 0,5 mm<sup>2</sup> (alt. AWG 20)

Bipolar



No. of phases	2		
Rated Voltage (V)	2.1		
Current (A)	4.2		
Resistance ( $\Omega$ )	0.5		
Inductance (mH)	1.5		
Holding Torque coils on DC (Nm)	1.8		
Dynamic Torque (Nm)	1.3		
Rotor Inertia (gcm <sup>2</sup> )	480	Allowable Axial Load (N)	15
Insulation Class	B	Allowable Radial Load (N)	75
Insulation Resistance	100M $\Omega$ , 500VDC	Max. Voltage Input (VDC)	60
Weight (kg)	1.1	Max. Starting Pulse Rate	5 kHz / FullStep
Step Angle ( $^\circ$ )	1.8	Max. Slewing Pulse Rate	19 kHz / FullStep
Pictographs / Symbols	 Hot Surface: Let device cool down before maintenance	 Operations may only be executed by qualified Electricians	 Read data and instructions carefully before initial operation
Piktogramme / Symbole	 Heiße Oberfläche: Gerät vor der Wartung abkühlen lassen	 Arbeiten dürfen nur von qualifizierten Fachkräften ausgeführt werden	 Lesen Sie die Daten und Anweisungen vor der ersten Inbetriebnahme sorgfältig durch

25.05.2023